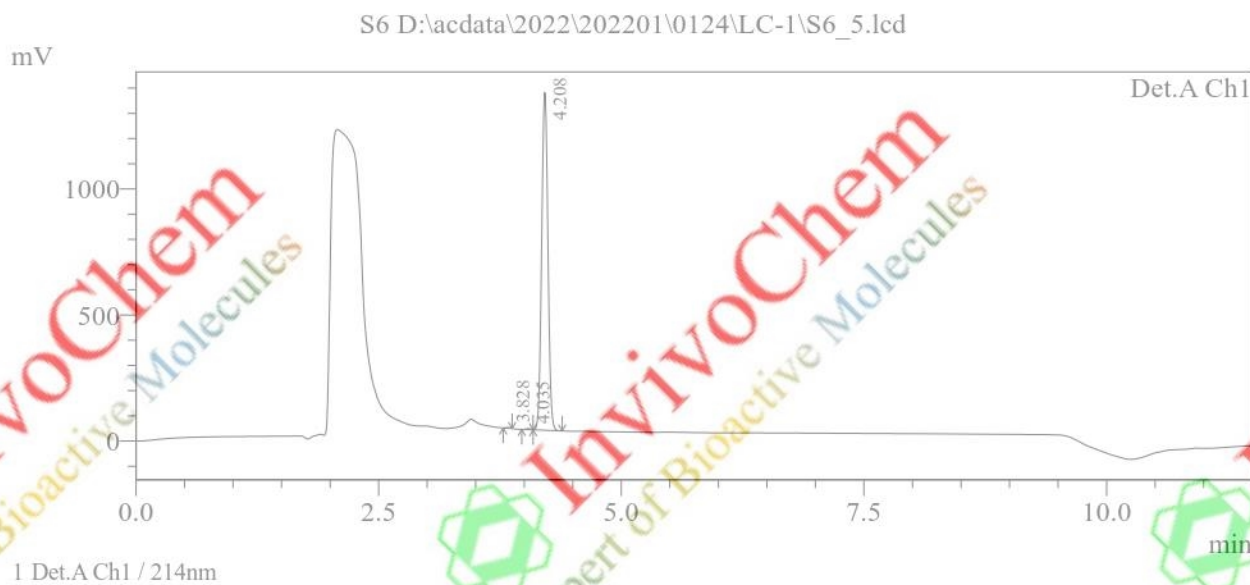


## HPLC Report

## Sample Information

Sample Name : S6  
 Sample ID : S6  
 Tray# : 1  
 Vial# : 11  
 Injection Volume : 1 uL  
 Data Filename : S6\_5.lcd  
 Method Filename : AB-0-60-100-13MIN-35C.lcm  
 Date Acquired : 01/24/2022 7:45:54 AM  
 Description : Method: 0-60  
 Column: Gemini C18 4.6\*150mm 5um  
 Mobile phase:  
   H<sub>2</sub>O(0.05%TFA)-ACN(0.05%TFA)  
   ACN from 0% to 60% over 7.5 minutes  
   7.5-8min , ACN from 60% to 100%, hold 2 minutes  
 Oven: 35C  
 Flow rate: 1.2mL/min  
 Instrument: SHIMADZU LC-2010C HT

## &lt;Chromatogram&gt;

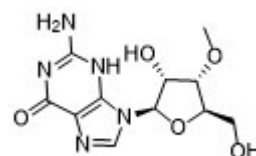


## &lt;Result&gt;

## PeakTable

Detector A Ch1 214nm

Peak#	Ret. Time	Area	Height	Area %
1	3.828	8450	2969	0.139
2	4.035	12829	4014	0.211
3	4.208	6048712	1340075	99.649
Total		6069991	1347057	100.000



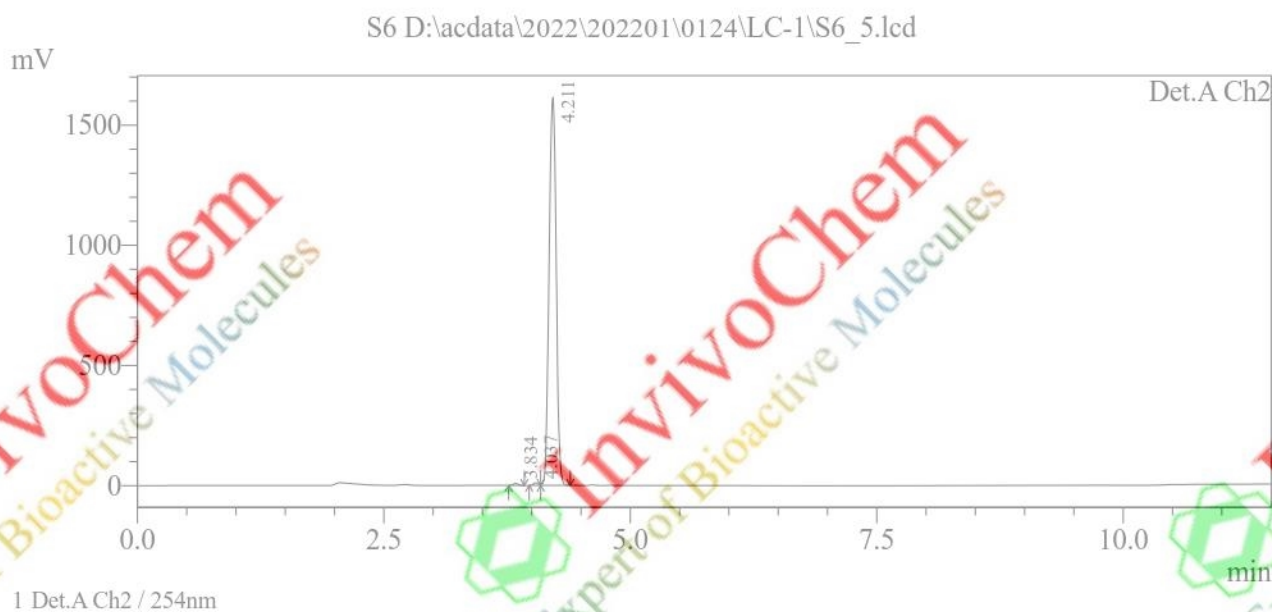
Product Name: 3-OMG  
 InvivoChem Cat #: V2227  
 CAS #: 10300-27-3  
 Batch #: V222701  
 Formula: C<sub>11</sub>H<sub>15</sub>N<sub>5</sub>O<sub>5</sub>  
 Molecular Weight: 297.271

## HPLC Report

## Sample Information

Sample Name : S6  
 Sample ID : S6  
 Tray# : 1  
 Vial# : 11  
 Injection Volume : 1 uL  
 Data Filename : S6\_5.lcd  
 Method Filename : AB-0-60-100-13MIN-35C.lcm  
 Date Acquired : 01/24/2022 7:45:54 AM  
 Description : Method: 0-60  
 Column: Gemini C18 4.6\*150mm 5um  
 Mobile phase:  
   H<sub>2</sub>O(0.05%TFA)-ACN(0.05%TFA)  
   ACN from 0% to 60% over 7.5 minutes  
   7.5-8min , ACN from 60% to 100%, hold 2 minutes  
 Oven: 35C  
 Flow rate: 1.2mL/min  
 Instrument: SHIMADZU LC-2010C HT

## &lt;Chromatogram&gt;

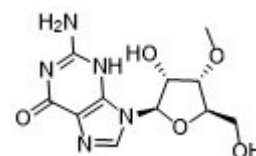


## &lt;Result&gt;

## PeakTable

Detector A Ch2 254nm

Peak#	Ret. Time	Area	Height	Area %
1	3.834	29586	7930	0.361
2	4.037	36949	10032	0.451
3	4.211	8121109	1615016	99.187
Total		8187643	1632977	100.000



Product Name: 3-OMG  
 InvivoChem Cat #: V2227  
 CAS #: 10300-27-3  
 Batch #: V222701  
 Formula: C<sub>11</sub>H<sub>15</sub>N<sub>5</sub>O<sub>5</sub>  
 Molecular Weight: 297.271