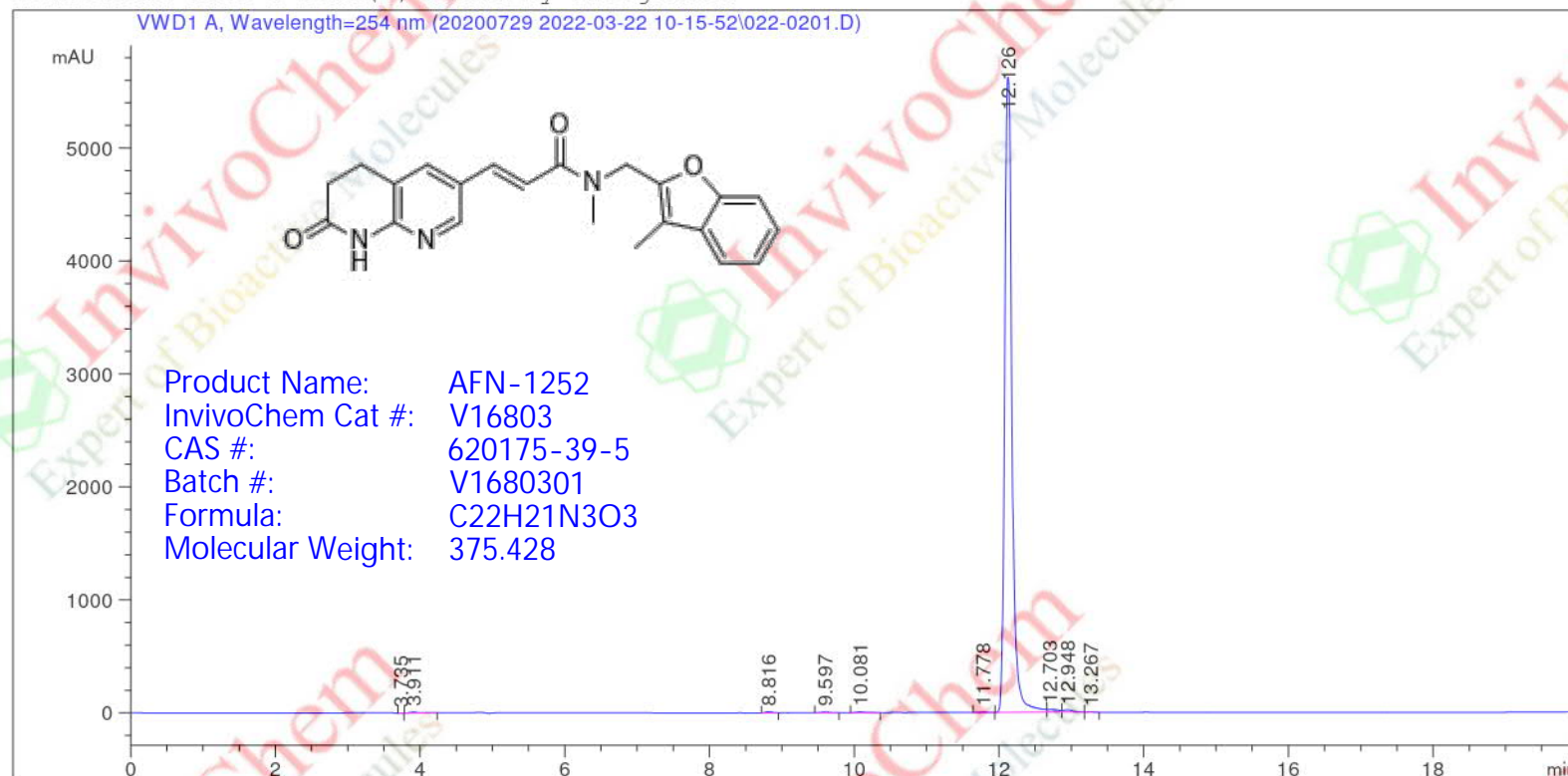


# HPLC Analysis for V16803 AFN-1252 620175-39-5 DMSO

Data File C:\CHEM32\1\DATA\20200729 2022-03-22 10-15-52\022-0201.D  
 Sample Name: LRF-20220322-01

```
=====
Acq. Operator   : BK-CX                      Seq. Line :    2
Acq. Instrument : Instrument 1                Location  : Vial 22
Injection Date  : 3/22/2022 10:38:11 AM      Inj       :    1
                                           Inj Volume: 5.0 µl

Acq. Method     : C:\CHEM32\1\DATA\20200729 2022-03-22 10-15-52\TYFF-20211107.M
Last changed    : 2/24/2022 3:07:37 PM by BK-CX
Analysis Method : C:\CHEM32\1\METHODS\TYFF-20211107.M
Last changed    : 2/24/2022 3:07:37 PM by BK-CX
Additional Info  : Peak(s) manually integrated
=====
```



## Area Percent Report

```
Sorted By      : Signal
Multiplier:    : 1.0000
Dilution:      : 1.0000
Use Multiplier & Dilution Factor with ISTDs
```

Signal 1: VWD1 A, Wavelength=254 nm

Peak #	RetTime [min]	Type	Width [min]	Area mAU *s	Height [mAU]	Area %
1	3.735	BB	0.0403	6.75437	2.75325	0.0169
2	3.911	BB	0.1163	77.80859	9.05268	0.1945
3	8.816	VV	0.0912	57.80436	10.14163	0.1445
4	9.597	VB	0.1089	44.37237	6.61194	0.1109
5	10.081	BB	0.1130	51.39219	7.15114	0.1284
6	11.778	VB	0.1413	18.63428	2.07329	0.0466
7	12.126	BV	0.1063	3.93039e4	5623.70654	98.2353
8	12.703	VV	0.1462	252.77829	24.56928	0.6318
9	12.948	VB	0.1310	181.11946	19.88650	0.4527
10	13.267	BB	0.0916	15.40671	2.68790	0.0385

Data File C:\CHEM32\1\DATA\20200729 2022-03-22 10-15-52\022-0201.D  
Sample Name: LRF-20220322-01

Peak #	RetTime [min]	Type	Width [min]	Area mAU *s	Height [mAU]	Area %
Totals :				4.00100e4	5708.63416	

=====  
\*\*\* End of Report \*\*\*