

Sample Name:

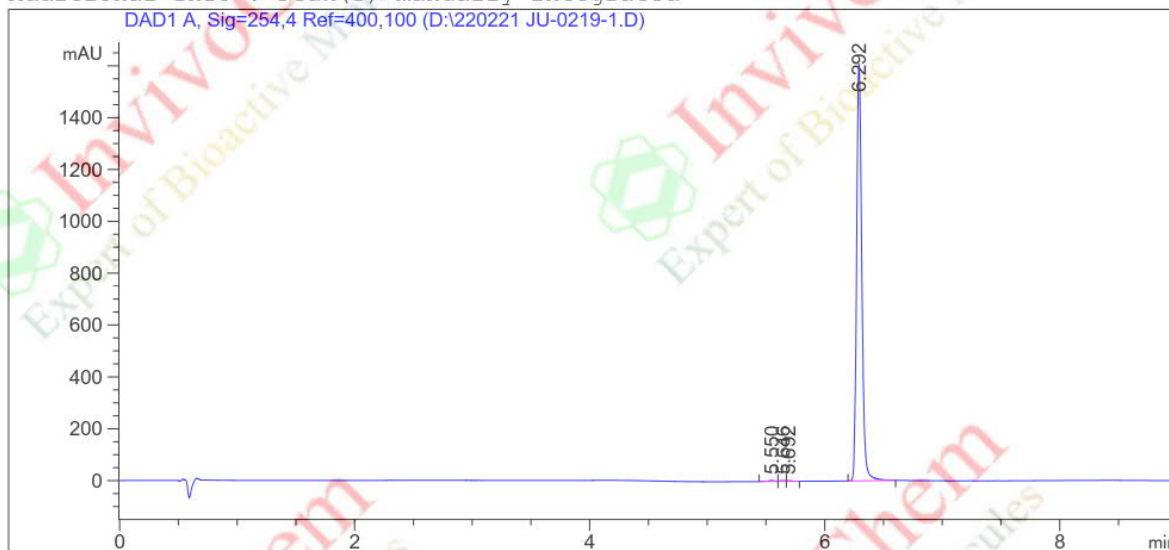
HPLC Analysis for V4047 Sulfaphenazole - HPLC

```

=====
Acq. Operator   :                               Seq. Line :   10
Acq. Instrument : Instrument 1                  Location  : Vial 11
Injection Date  : 2/21/2022 4:19:47 PM        Inj       :    1
                                                Inj Volume: 3.0 µl
Different Inj Volume from Sequence !      Actual Inj Volume : 4.0 µl
Acq. Method    : D:
Last changed   : 6/24/2021 11:39:21 AM
Analysis Method : D:\CHEM32\1\1.M
Last changed   : 2/21/2022 5:38:01 PM
                (modified after loading)
Sample Info    : [A = ACN, B = acid-1/H2O] 0% A/B 1.5 min, 0-95% A/B 4.5 min, 95% A/B 3 min;
                Athena C18 (3 µm, 2.1 mm * 100 mm); Flow: 0.46 ml/min, T = 25
=====

```

Additional Info : Peak(s) manually integrated



```

=====
Area Percent Report
=====

```

```

Sorted By      :      Signal
Multiplier     :      1.0000
Dilution       :      1.0000
Use Multiplier & Dilution Factor with ISTDs

```

Signal 1: DAD1 A, Sig=254,4 Ref=400,100

Peak #	RetTime [min]	Type	Width [min]	Area [mAU*s]	Height [mAU]	Area %
1	5.550	BV	0.0632	15.67010	3.46970	0.3147
2	5.646	VV	0.0434	9.68137	3.28186	0.1945
3	5.692	VB	0.0411	6.83669	2.48441	0.1373
4	6.292	BB	0.0474	4946.40137	1607.45178	99.3535
Totals :				4978.58952	1616.68775	



```

Product Name:      Sul faphenazole
InvivoChem Cat #:  V4047
CAS #:            526-08-9
Batch #:          V404701
Formula:          C15H14N4O2S
Molecular Weight: 314.36

```

```

=====
*** End of Report ***
=====

```