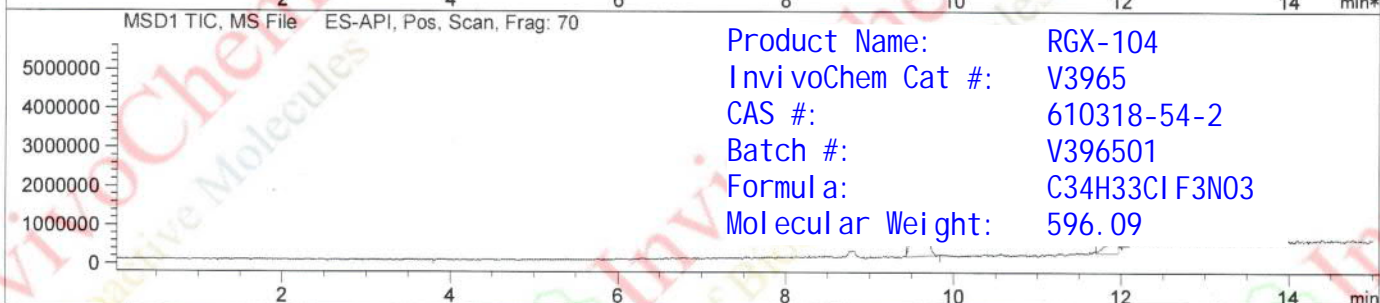
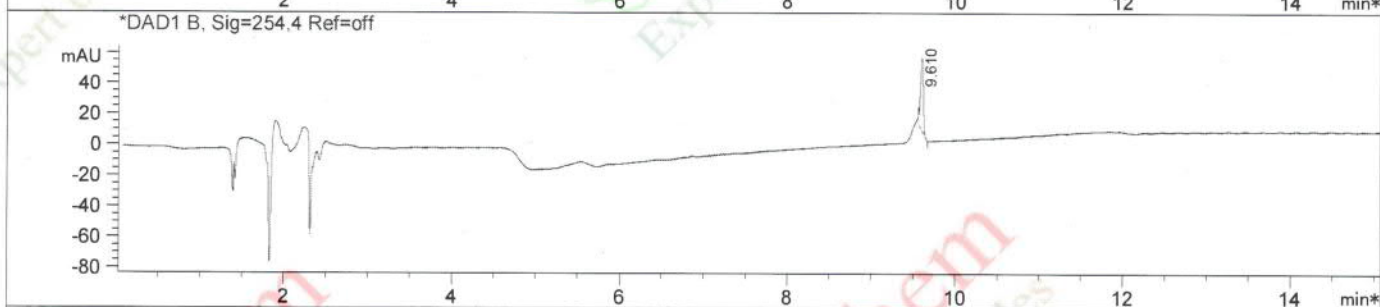
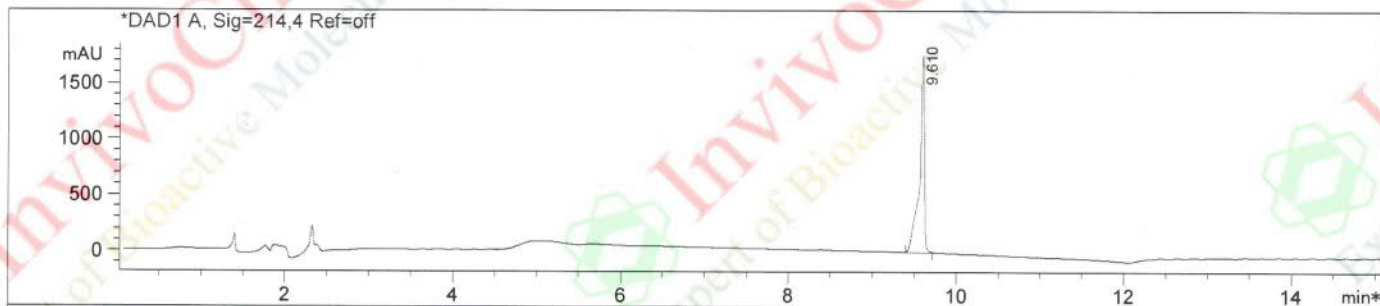


# HPLC Analysis for V396501 RGX-104

Method Info : Mobile Phase : A:water(0.1%TFA) B:ACN(0.1%TFA)  
Gradient:5%B for 2min, increase to 95%B within 8min,95%B for 5min  
Flow Rate :1ml/min  
Column :Sunfire C18 150\*4.6mm,3.5um  
Column Temperature:40C  
Detection:UV(214nm,4nm) and MS(ESI,POS Mode,110-1300amu)



Integration Results for DAD1 A, Sig=214.4 Ref=off

RetTim	Width	Area	Height	Area%
9.61	0.06	7089.18	1762.02	100.00

Integration Results for DAD1 B, Sig=254.4 Ref=off

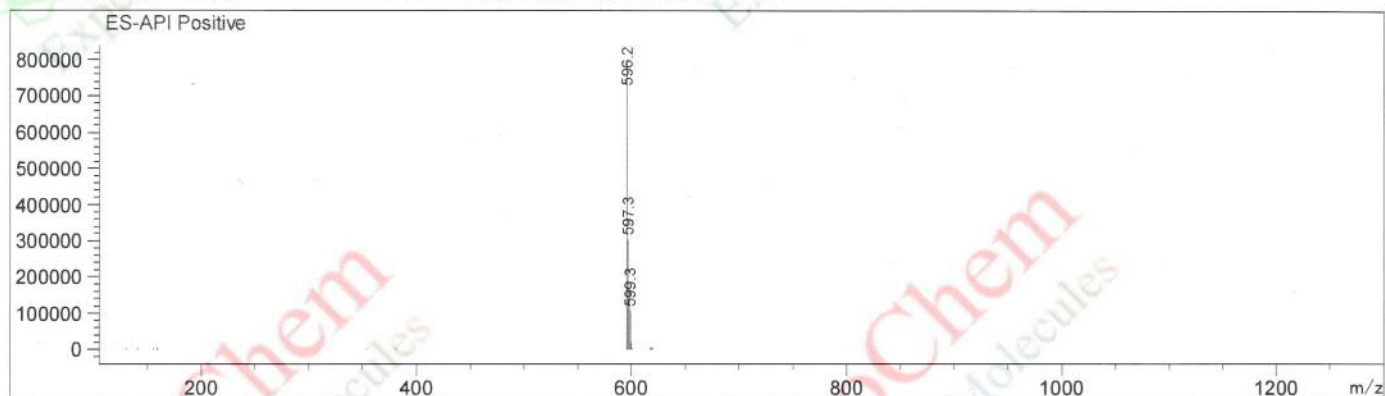
RetTim	Width	Area	Height	Area%
9.61	0.04	115.36	48.28	100.00

# LC Analysis for V396501 RGX-104

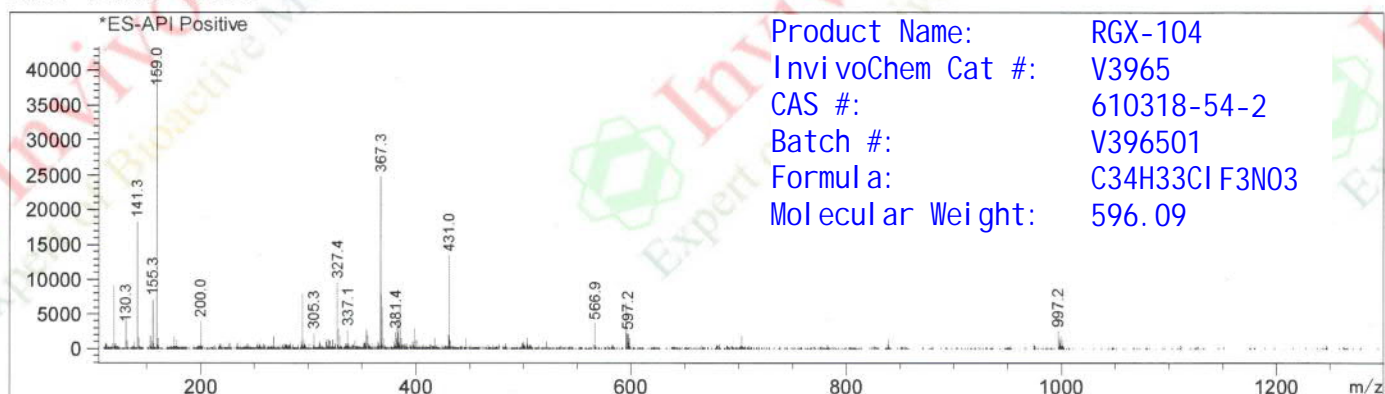
LC/MS Report

Ret. Time: 9.64

<<<< POSITIVE SPECTRA >>>>



Ret. Time: 11.94



Product Name: RGX-104  
InvivoChem Cat #: V3965  
CAS #: 610318-54-2  
Batch #: V396501  
Formula: C<sub>34</sub>H<sub>33</sub>ClF<sub>3</sub>N<sub>3</sub>  
Molecular Weight: 596.09