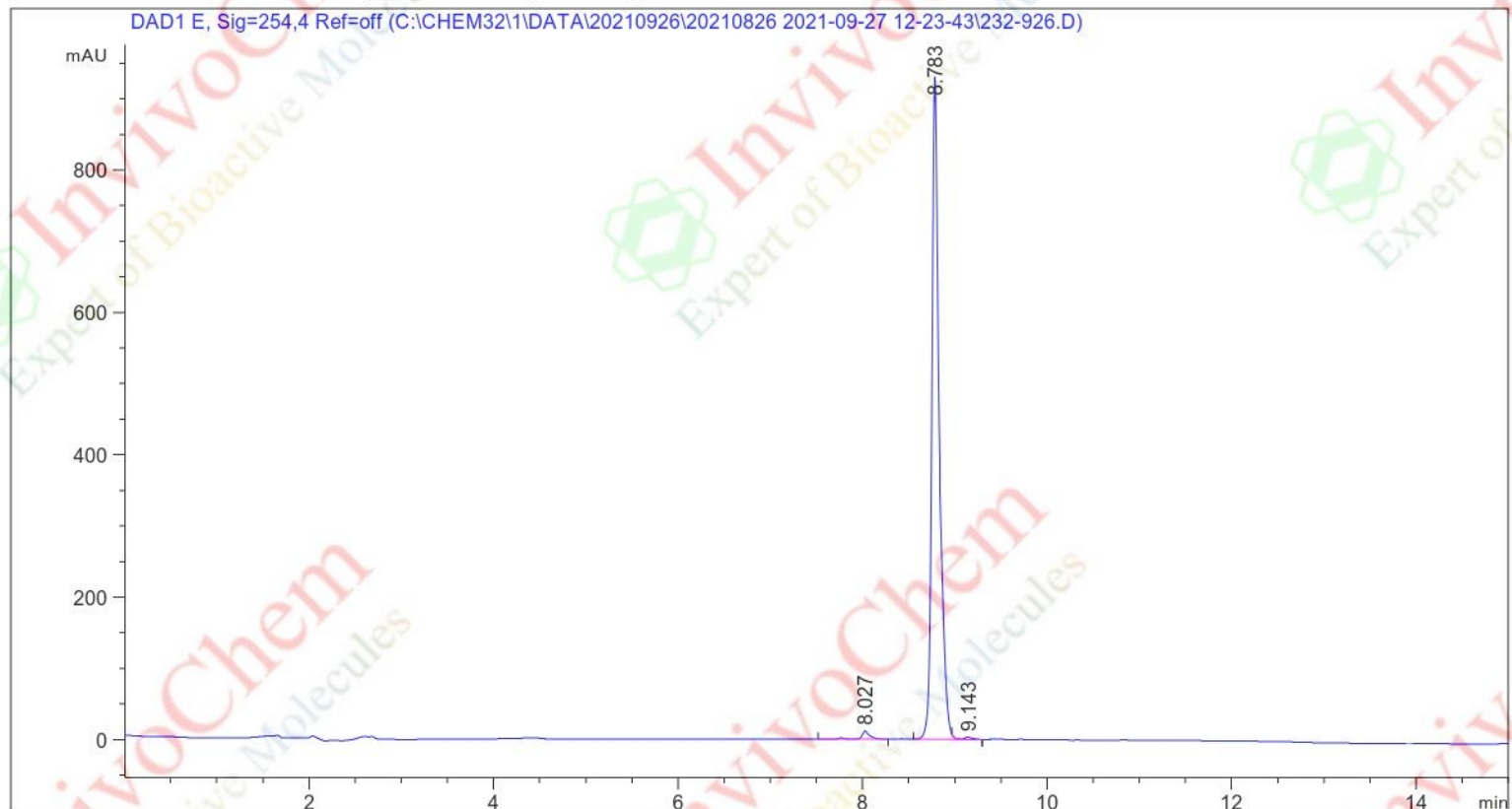


```

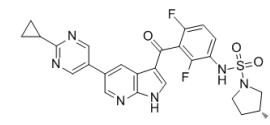
=====
Acq. Operator   : admin                      Seq. Line   :    1
Acq. Instrument : LC-1260                     Location    : P1-C6
Injection Date  : 9/27/2021 12:24:50 PM      Inj         :    1
                                                Inj Volume  : 5.000 µl
Different Inj Volume from Sample Entry! Actual Inj Volume : 2.000 µl
Acq. Method     : C:\Chem32\1\Data\20210926\20210826 2021-09-27 12-23-43\5-95-15min.M
Last changed    : 9/27/2021 12:23:43 PM by admin
Analysis Method : C:\Chem32\1\Data\20210811\20210810 2021-08-11 17-26-45\5-95-15min.M (
                Sequence Method)
Last changed    : 9/24/2021 4:40:05 PM by admin
                (modified after loading)
Additional Info : Peak(s) manually integrated
    
```



Area Percent Report

```

Sorted By      : Signal
Multiplier     : 1.0000
Dilution       : 1.0000
Use Multiplier & Dilution Factor with ISTDs
    
```



```

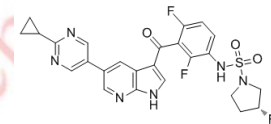
Product Name:      PLX8394
Invi voChem Cat #: V5142
CAS #:             1393466-87-9
Batch #:           V514201
Formula:           C25H21F3N6O3S
Mol ecul ar Weight: 542.54
    
```

Signal 1: DAD1 E, Sig=254,4 Ref=off

Peak #	RetTime [min]	Type	Width [min]	Area [mAU*s]	Height [mAU]	Area %
1	8.027	VB R	0.0835	80.44823	11.68602	1.5117
2	8.783	BV R	0.0815	5220.25342	930.22003	98.0955
3	9.143	VB E	0.0876	20.90069	3.31231	0.3928

Totals : 5321.60233 945.21837

\*\*\* End of Report \*\*\*



Product Name: PLX8394  
InvivoChem Cat #: V5142  
CAS #: 1393466-87-9  
Batch #: V514201  
Formula: C<sub>25</sub>H<sub>21</sub>F<sub>3</sub>N<sub>6</sub>O<sub>3</sub>S  
Molecular Weight: 542.54