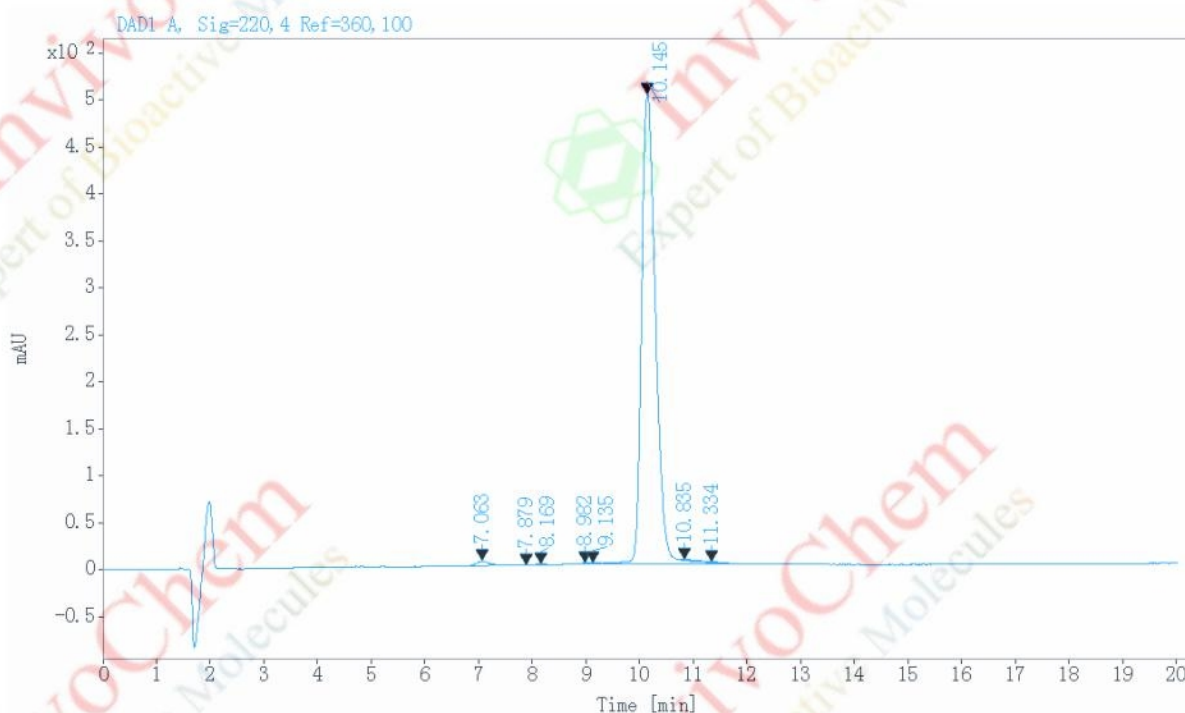


HPLC Analysis for V3358401 GsMTx4

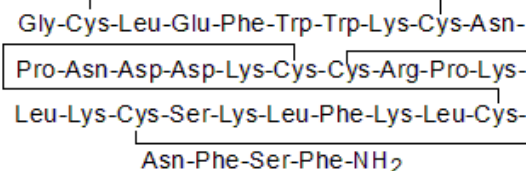
Data file: D:\CHEM32\1\DATA\210827\602602 21060046Final.D
 Sample name: 602602 21060046Final
 Description: Mobile phase: Buffer A: 0.1%TFA in H2O
 Buffer B: 0.1%TFA in ACN
 Gradient: 30-40% B in 20 min, Flow rate: 1ml/min
 Column: Unitary C18, 4.6*150mm, 5um 100A
 Instrument: Agilent HPLC 1100

Instrument: 1100 Location: 13
 Injection date: 2021/8/27 10:31:45 Injection: 1 of 1
 Last changed: 2021/8/27 16:57:08 Injection volume: 15.000
 Acq. operator: SYSTEM



Signal: DAD1 A, Sig=220, 4 Ref=360, 100

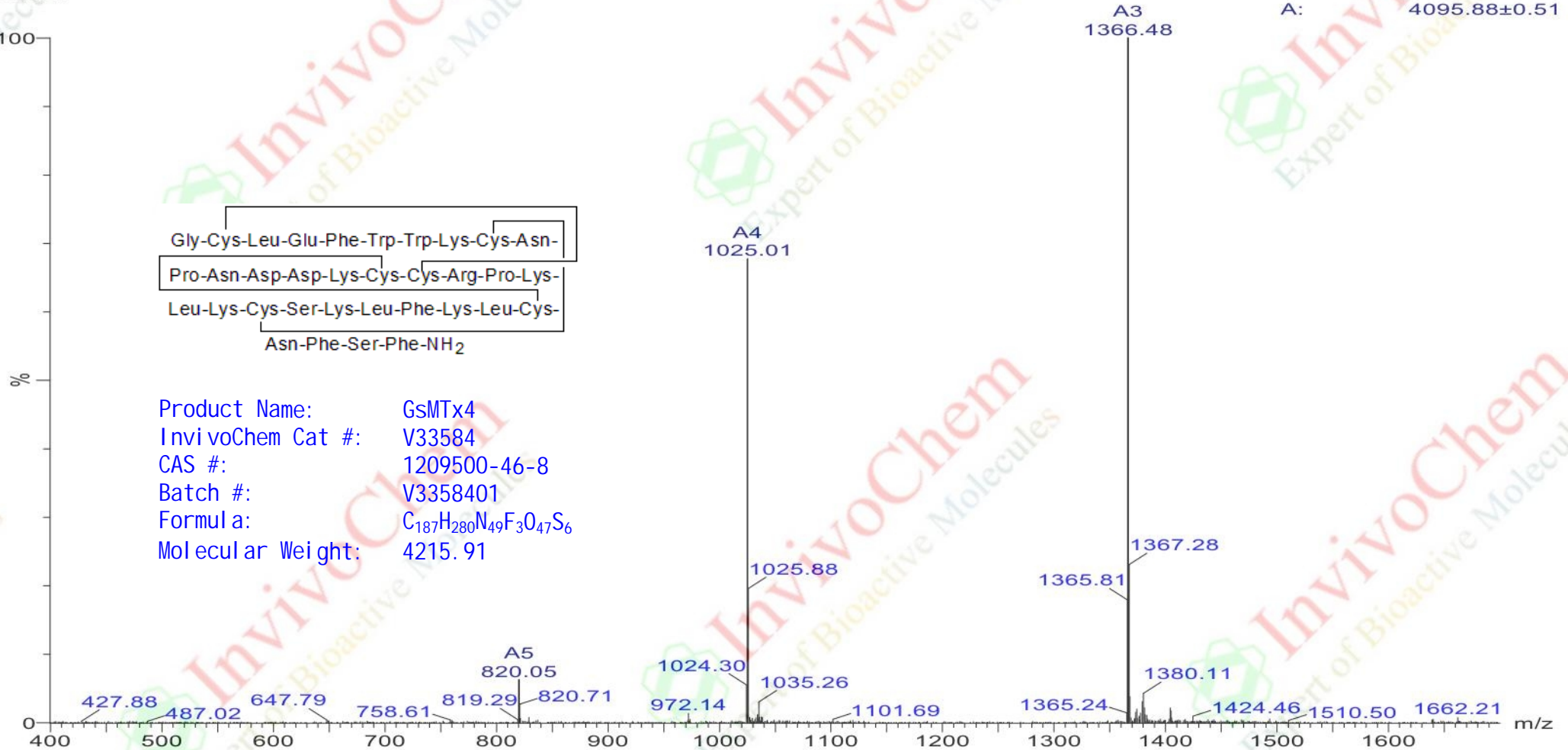
RT [min]	Type	Width [min]	Area	Height	Area% Name
7.063	MF	0.2925	89.4870	5.0989	0.9766
7.879	MF	0.2494	10.3144	0.6894	0.1126
8.169	FM	0.1785	9.5139	0.8885	0.1038
8.982	BV	0.1303	7.5489	0.7444	0.0824
9.135	VB	0.1622	5.8410	0.4537	0.0637
10.145	BV R	0.2821	9005.2588	500.1191	98.2756
10.835	VV E	0.4005	26.5143	0.8045	0.2894
11.334	VB E	0.1382	8.7888	0.8125	0.0959
	Sum		9163.2672		



Product Name: GsMTx4
 InvivoChem Cat #: V33584
 CAS #: 1209500-46-8
 Batch #: V3358401
 Formula: C₁₈₇H₂₈₀N₄₉F₃O₄₇S₆
 Molecular Weight: 4215.91

MASS SPECTROMETRY REPORT

602602



Sample Description

Analyzed date: 2021-08-27
 Analyst: SHAO
 Sample: 602602
 M.W.: 4095.9
 Lot. No.:

Instrument

Probe: ESI
 Nebulizer Gas Flow: 1.5L/min
 CDL: -20.0v
 CDL Temp.: 250 °C
 Block Temp.: 200 °C

SHIMADZU LCMS-2020

Probe Bias: +4.5kv
 Detector: 1.5kv
 T. Flow: 0.2ml/min
 B. Conc.: 50%H₂O/50%ACN