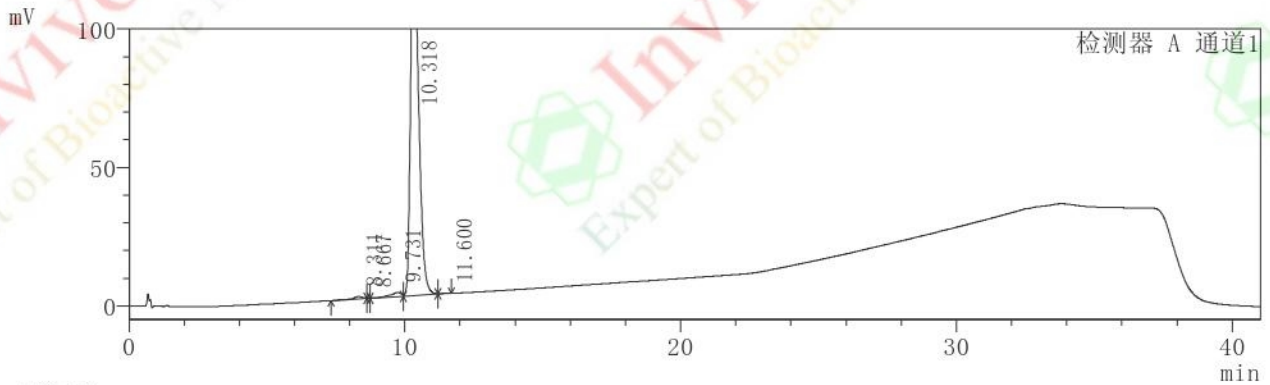


HPLC Analysis for V3333901 Lys-SMCC-DM1

<色谱图>

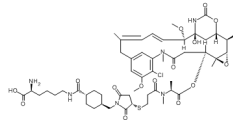


<结果>

峰表

检测器 A Ch1 232nm

峰#	名称	保留时间	高度	理论塔板#	分离度	面积	面积 %
1		8.311	937	3814.3	0.00	22653	0.815
2		8.667	216	0.0	0.00	1314	0.047
3		9.731	1578	4095.6	0.00	43497	1.566
4		10.318	133062	5902.4	1.03	2707744	97.461
5		11.600	58	122262.7	3.83	3090	0.111
总计			135851			2778298	100.000

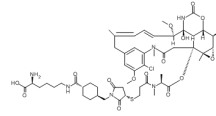


Product Name: Lys-SMCC-DM1
 Invi voChem Cat #: V33339
 CAS #: 1281816-04-3
 Batch #: V3333901
 Formul a: C₅₃H₇₅ClN₆O₁₅S
 Mol ecul ar Wei ght: 1103.71



Analysis Report

Product Name: Lys-SMCC-DM1
 In vivoChem Cat #: V33339
 CAS #: 1281816-04-3
 Batch #: V3333901
 Formula: C₅₃H₇₅ClN₆O₁₅S
 Molecular Weight: 1103.71



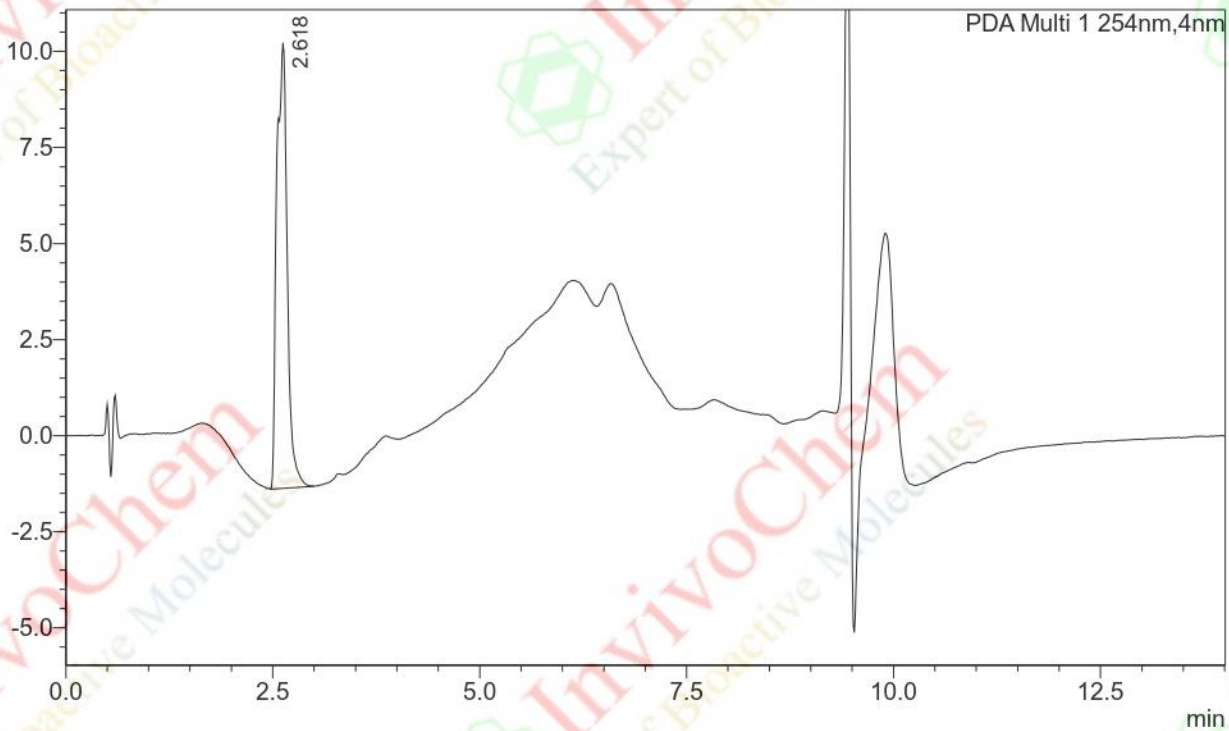
<Sample Information>

Sample Name : D0412
 Sample ID :
 Data Filename : D0412.lcd
 Method Filename : general test.lcm
 Batch Filename : 2104D.lcb
 Vial # : 2-7
 Injection Volume : 0.1 uL
 Date Acquired : 2021/04/12 14:25:06
 Date Processed : 2021/04/12 15:15:13

Sample Type : Unknown
 Acquired by : System Administrator
 Processed by : System Administrator

<Chromatogram>

mAU



MS Chromatogram

