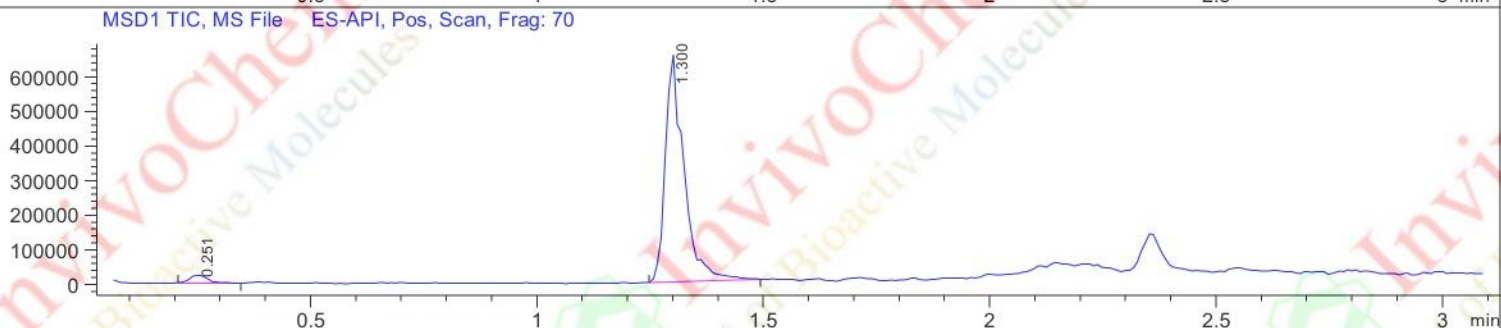
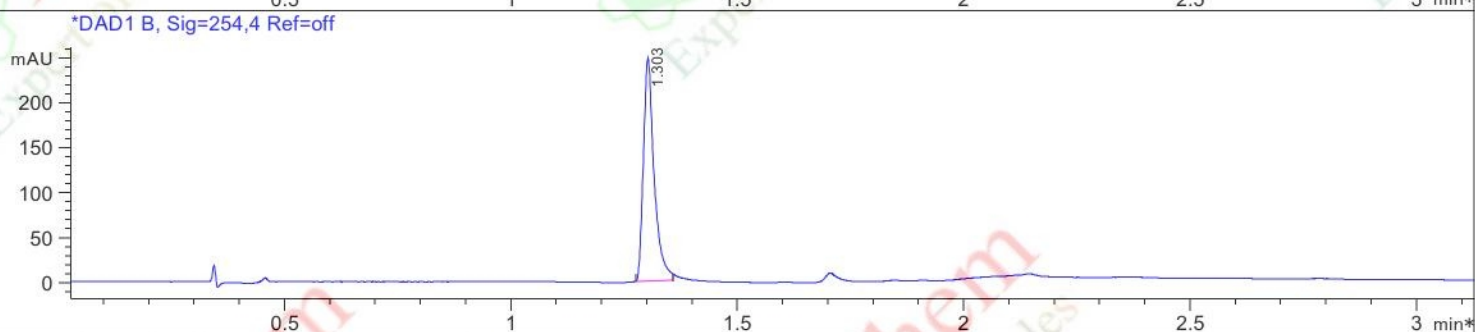
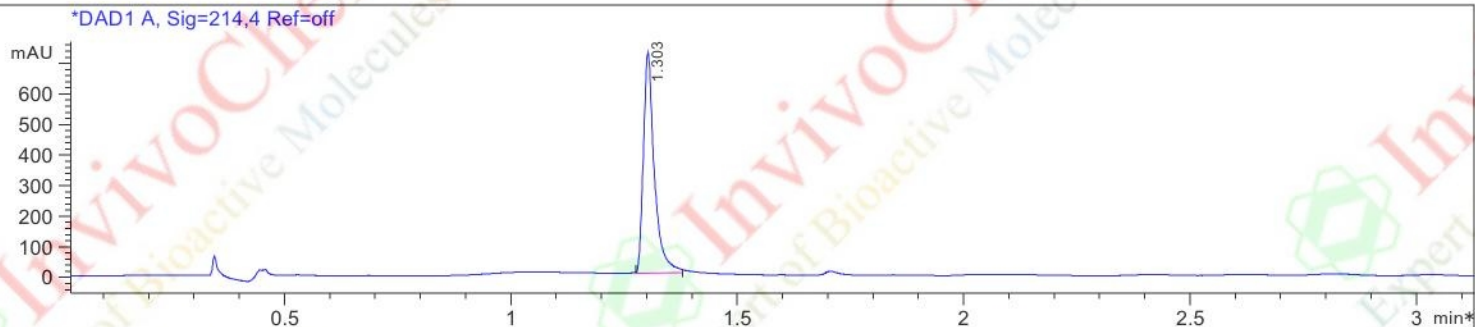


HPLC Analysis for V239201 Merafloxacin

Injection Date : 15 Jul 21
Sample Name : 9188-00-0
Method Info : Column:SunFire C18 (4.6x 50 mm,3.5 um)
Mobile phase: H2O(0.01%TFA) (A) / ACN(0.01%TFA)(B)
Elution program: Gradient from 10 to95% of B in 1.4 min at 2ml/min
Temperature: 50 °C
Detection: UV (214 , 4 nm) and MS (ESI, Pos mode ,110 to 1000 amu)

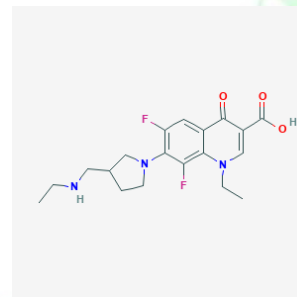


Integration Results for DAD1 A, Sig=214,4 Ref=off

RetTim	Width	Area	Height	Area%
1.30	0.02	1213.47	719.97	100.00

Integration Results for DAD1 B, Sig=254,4 Ref=off

RetTim	Width	Area	Height	Area%
1.30	0.02	410.22	248.11	100.00

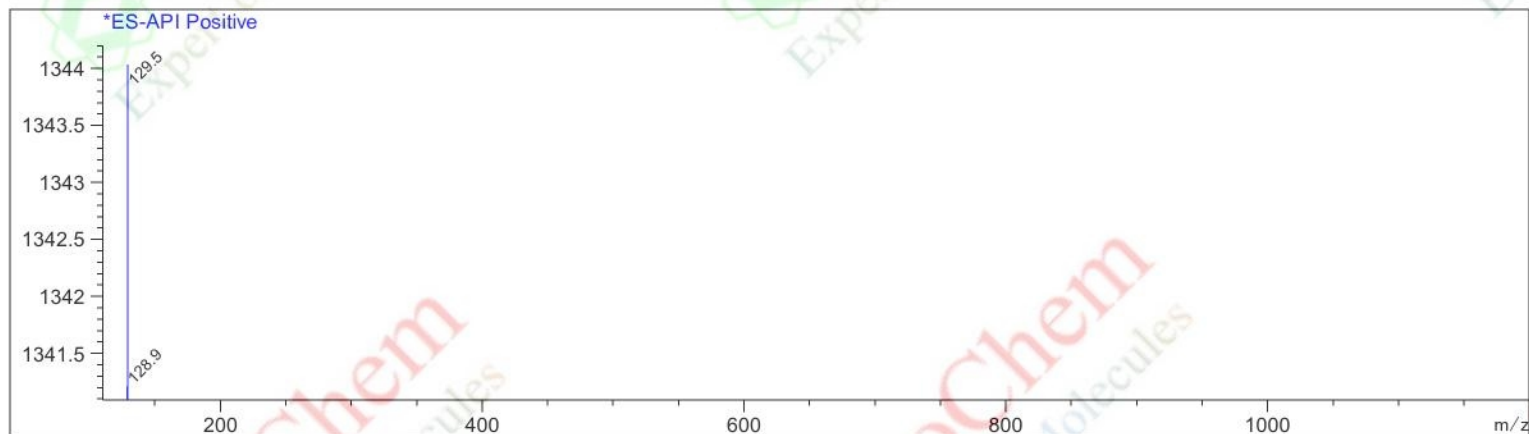


Product Name: Merafloxacin
InvivoChem Cat #: V2392
CAS #: 91188-00-0
Batch #: V239201
Formula: C19H23F2N3O3
Molecular Weight: 379.4078

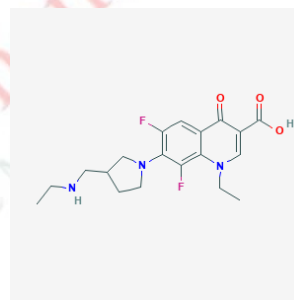
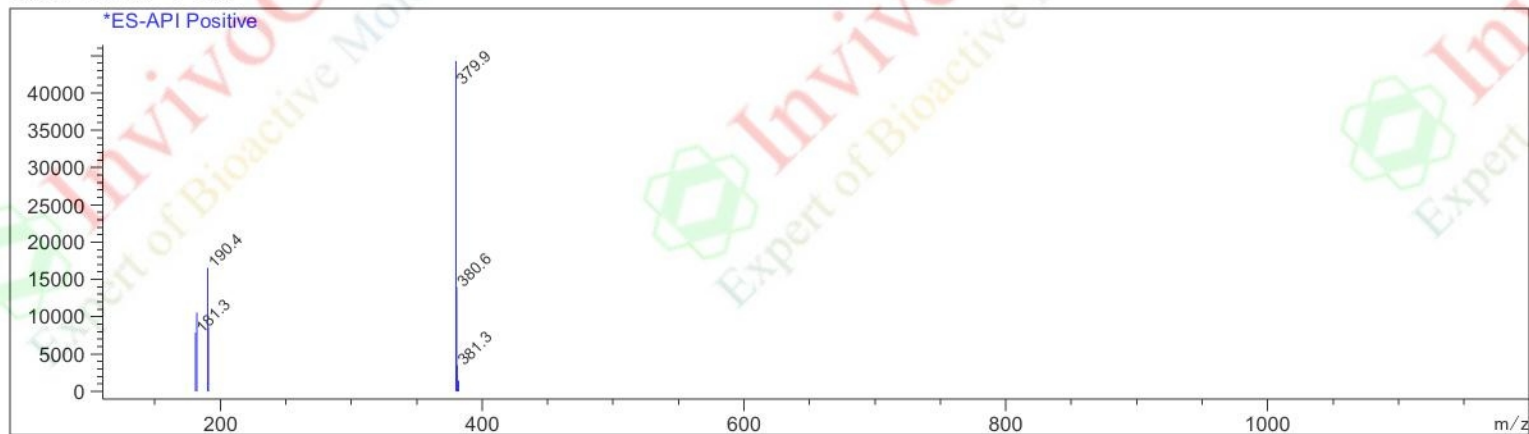
HPLC Analysis for V239201 Merafloxacin

Ret. Time: 0.25

<<<< POSITIVE SPECTRA >>>>



Ret. Time: 1.30



Product Name:	Merafloxacin
InvivoChem Cat #:	V2392
CAS #:	91188-00-0
Batch #:	V239201
Formula:	C ₁₉ H ₂₃ F ₂ N ₃ O ₃
Molecular Weight:	379.4078