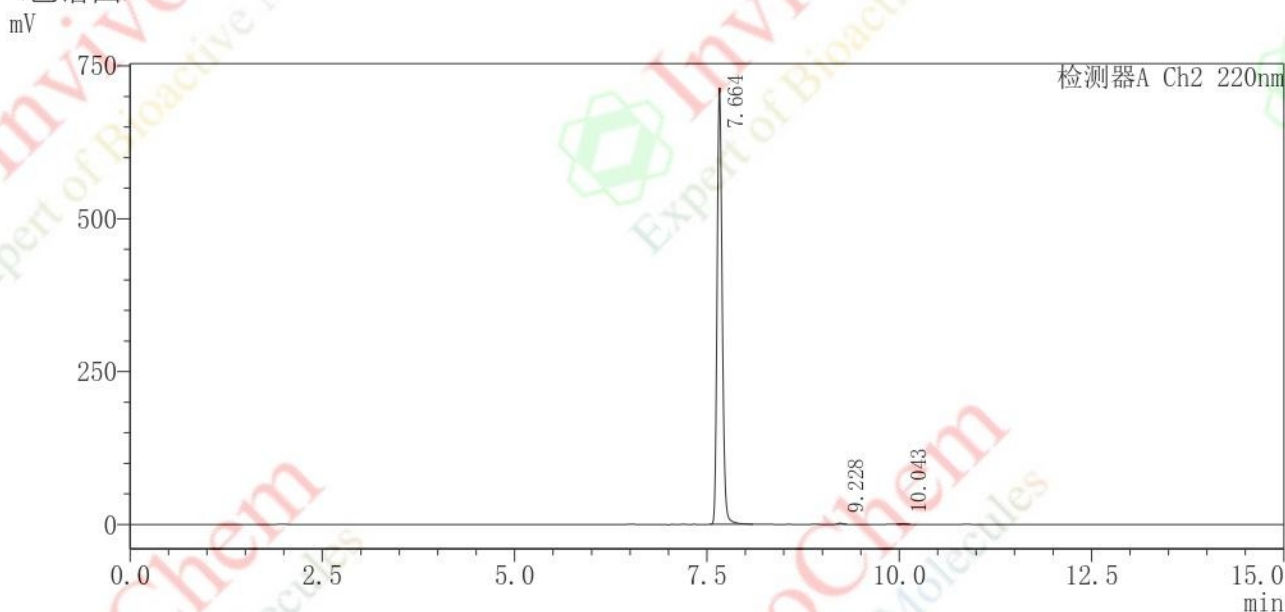


## 〈样品信息〉

样品名 : FCW1102-03  
 样品ID : 20211104B015  
 数据文件名 : 20211104B015 FCW1102-03 .lcd  
 方法文件名 : Routine-短柱 .lcm  
 批处理文件名 : 20211104.lcb  
 样品瓶号 : 1-8  
 进样体积 : 1  $\mu$ L  
 分析日期 : 2021/11/04 16:09:38  
 处理日期 : 2021/11/04 16:31:31

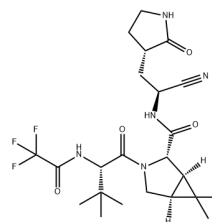
## 〈色谱图〉



## 〈峰表〉

检测器A Ch2 220nm

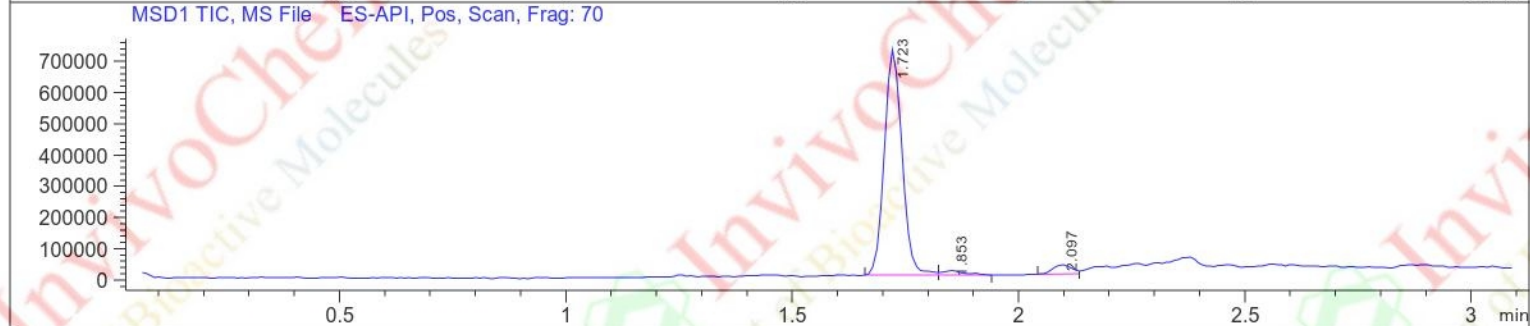
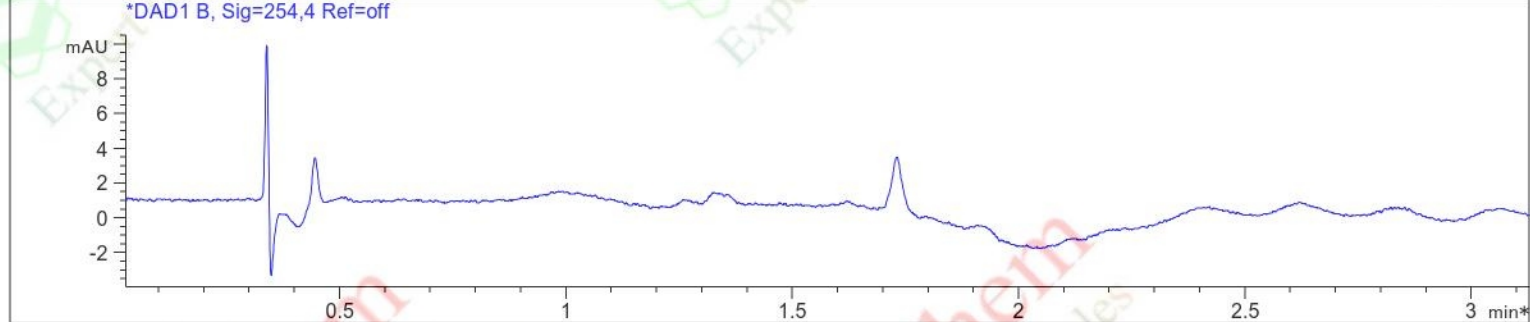
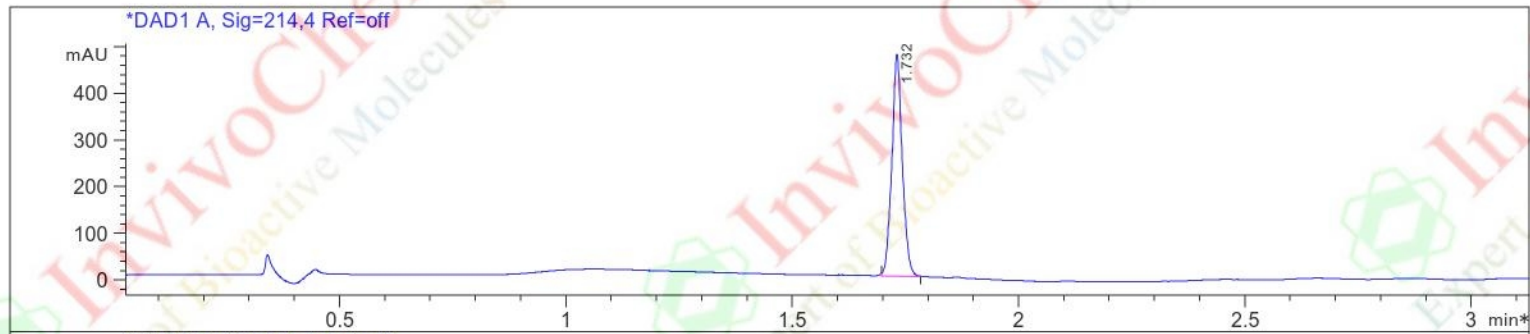
峰号	保留时间	面积	高度	面积%
1	7.664	3278542	713570	99.738
2	9.228	5374	1490	0.163
3	10.043	3239	706	0.099
总计		3287155	715766	100.000



Product Name: PF-07321332  
 In vivoChem Cat #: V2402  
 CAS #: 2628280-40-8  
 Batch #: V240201  
 Formula: C23H32F3N5O4  
 Molecular Weight: 499.5352

# LCMS Analysis for V240201 PF-07321332

Injection Date : 12 Nov 21  
 Sample Name : ms  
 Method Info : Column:SunFire C18 (4.6x 50 mm,3.5 um)  
 Mobile phase: H2O(0.01%TFA ) (A) / ACN(0.01%TFA)(B)  
 Elution program: Gradient from 10 to95% of B in 1.4 min at 2ml/min  
 Temperature: 50 °C  
 Detection: UV (214 , 4 nm) and MS (ESI, Pos mode ,110 to 1000 amu)

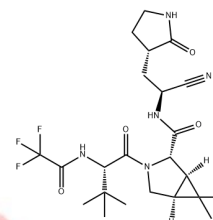


**Integration Results for DAD1 A, Sig=214,4 Ref=off**

RetTim	Width	Area	Height	Area%
1.73	0.02	766.36	474.83	100.00

**Integration Results for DAD1 B, Sig=254,4 Ref=off**

RetTim	Width	Area	Height	Area%

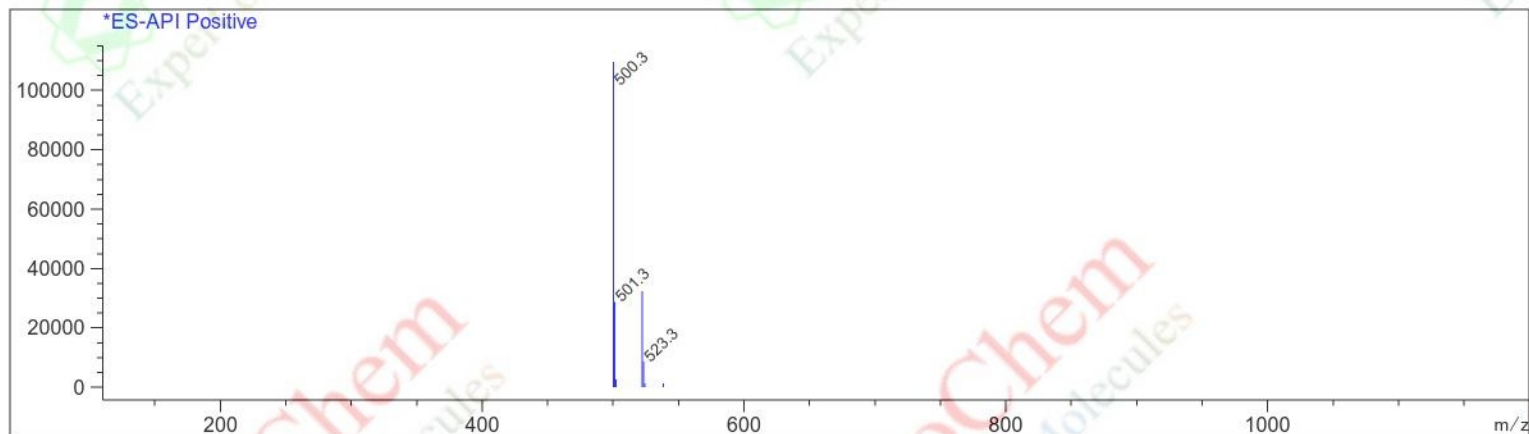


Product Name: PF-07321332  
 InvivoChem Cat #: V2402  
 CAS #: 2628280-40-8  
 Batch #: V240201  
 Formula: C23H32F3N5O4  
 Molecular Weight: 499.5352

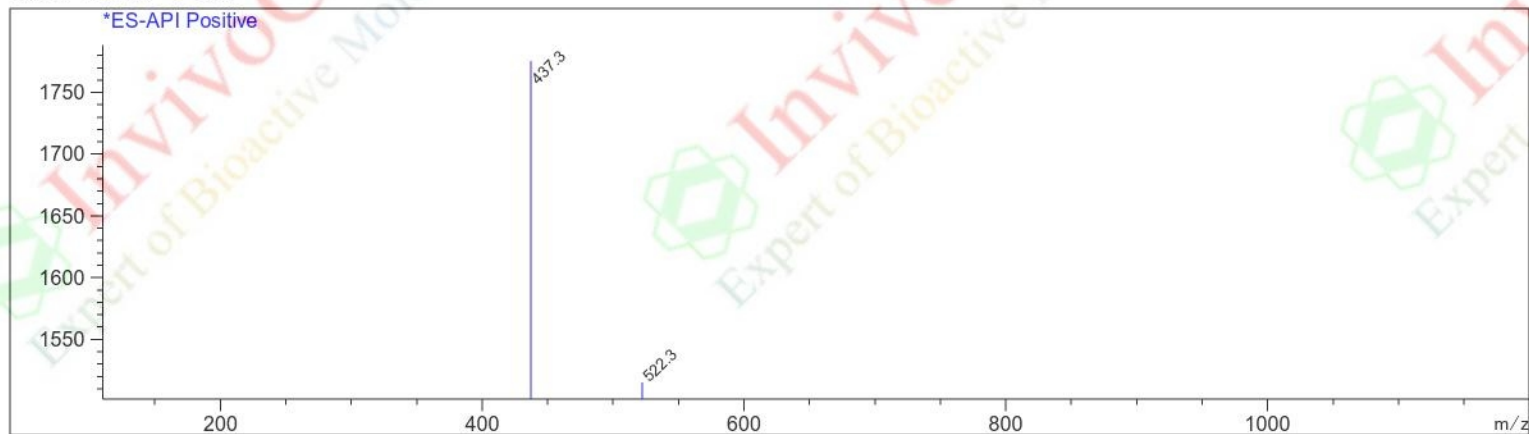
## LCMS Analysis for V240201 PF-07321332

Ret. Time: 1.72

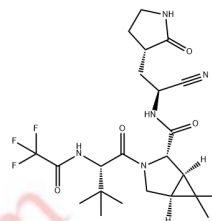
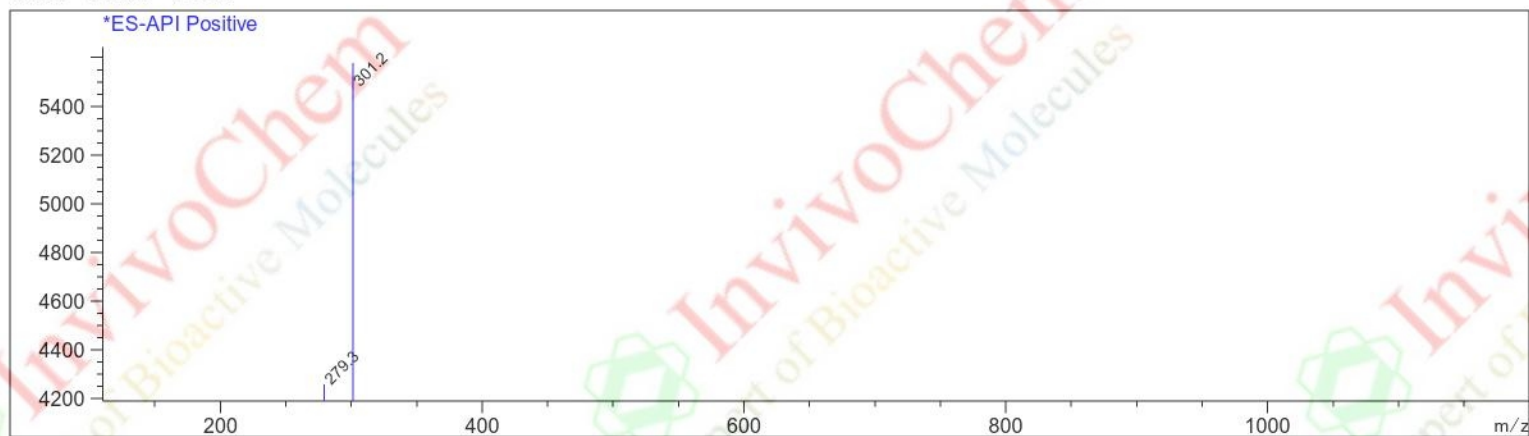
&lt;&lt;&lt;&lt; POSITIVE SPECTRA &gt;&gt;&gt;&gt;



Ret. Time: 1.85



Ret. Time: 2.10



Product Name: PF-07321332  
InvivoChem Cat #: V2402  
CAS #: 2628280-40-8  
Batch #: V240201  
Formula: C<sub>23</sub>H<sub>32</sub>F<sub>3</sub>N<sub>5</sub>O<sub>4</sub>  
Molecular Weight: 499.5352