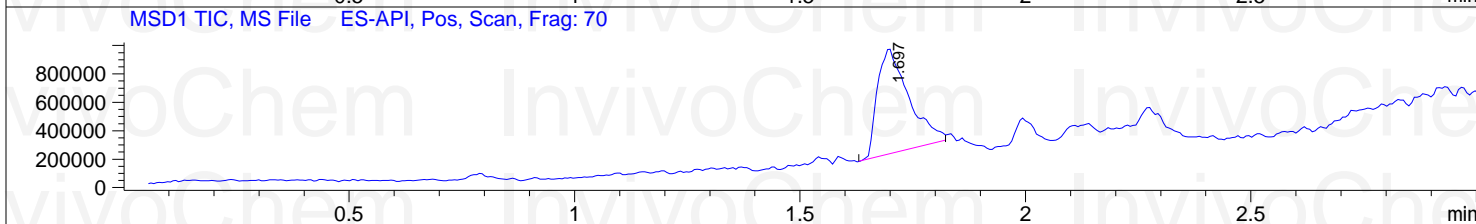
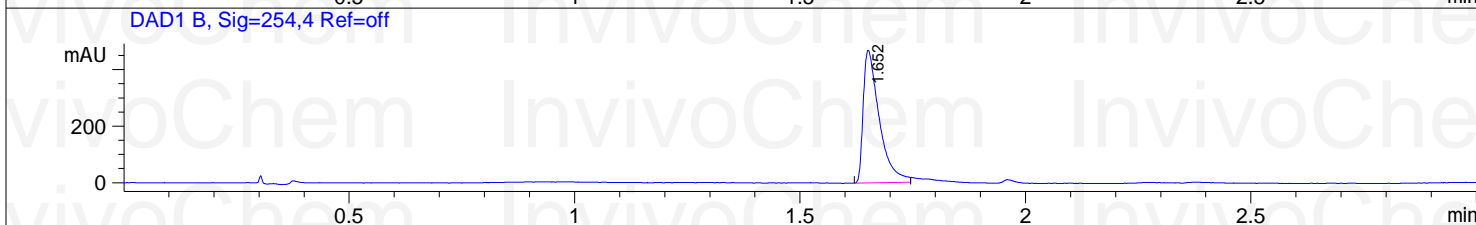
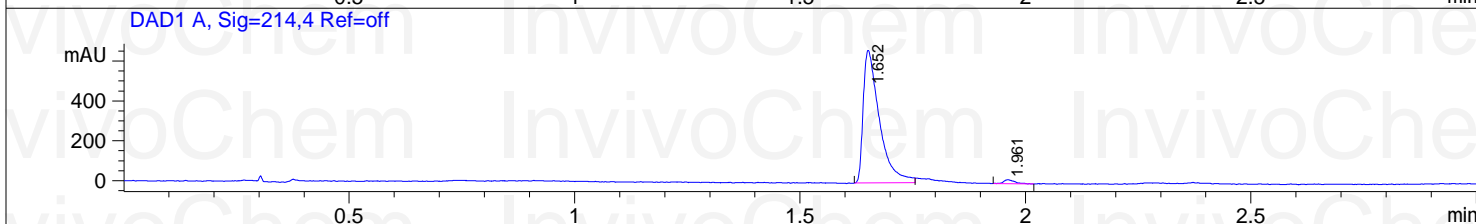
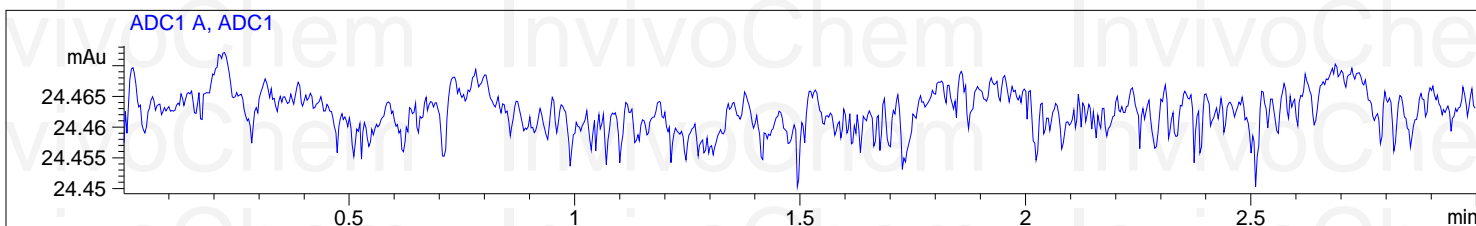


LCMS Analysis for V3466301 XAC

LC/MS Report

File D:\DATA\T195\MONITOR\113-06450-LCMSA043.D

Injection Date : 09-Aug-20, 08:18:55	Tgt Mass(EZX) :
Sample Name : 113	Location : P2-E-03
Acq. Operator : T195-Monitor	Inj : 0
Spec. Reported : MS Integration	Inj Volume : 2 ul
Acq. Method : C:\CHEM32\1\METHODS\1-POS-3MIN.M	
Analysis Method : C:\CHEM32\1\METHODS\1-POS-3MIN.M	
Sample Info : Easy-Access Method: '1-POS-3MIN'	
Method Info : Mobile Phase: A: water(10mm NH4HCO3) B: ACN	
Gradient: 5%-95% B in 1.5min	
Flow Rate: 2.0ml/min	
Column: X-Bridge C18,4.6*50mm,5um	
Oven Temperature: 40 C	
MASS Range:110-800	



Integration Results for DAD1 A, Sig=214,4 Ref=off

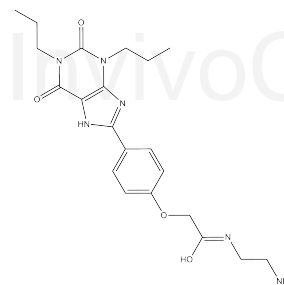
RetTim	Width	Area	Height	Area%
1.65	0.04	1662.44	662.87	98.16
1.96	0.02	31.14	18.99	1.84

Integration Results for DAD1 B, Sig=254,4 Ref=off

RetTim	Width	Area	Height	Area%
1.65	0.04	1162.10	467.91	100.00

Integration Results for MSD1 TIC, MS File

RetTim	Width	Area	Height	Area%
1.70	0.06	3576324.25	745632.94	100.00



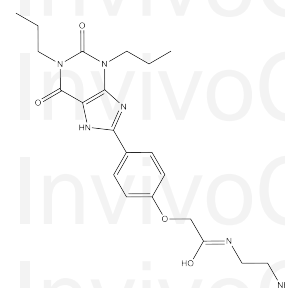
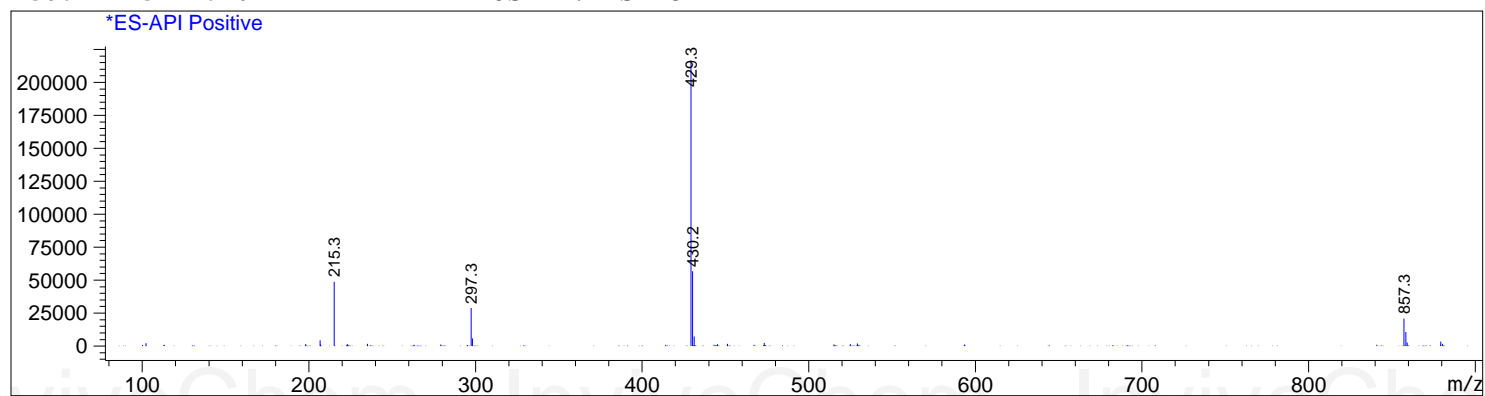
Product Name: XAC
InvivoChem Cat #: V34663
CAS #: 96865-92-8
Batch #: V3466301
Formula: C21H28N6O4
Molecular Weight: 428.48

LCMS Analysis for V3466301 XAC

LC/MS Report

Ret. Time: 1.70

<<<< POSITIVE SPECTRA >>>>



Product Name: XAC
InvivoChem Cat #: V34663
CAS #: 96865-92-8
Batch #: V3466301
Formula: C₂₁H₂₈N₆O₄
Molecular Weight: 428.48