

LCMS Analysis for V671801 AF38469

File D:\DATA\CHEMIST\AF3846911-13277-LCMS.D

Injection Date : 17 Mar 20 3:04 pm +0800

Sample Name : AF38469

Acq. Operator : chemist

Spec. Reported : MS Integration

Acq. Method : C:\CHEM32\1\METHODS\HPLC.M

Analysis Method : C:\CHEM32\1\METHODS\HPLC.M

Sample Info : Easy-Access Method: 'HPLC'

Method Info : Mobile phase: A1:water(0.01%TFA)

Tgt Mass(EZX) :

Location : P1-D-03

Inj : 1

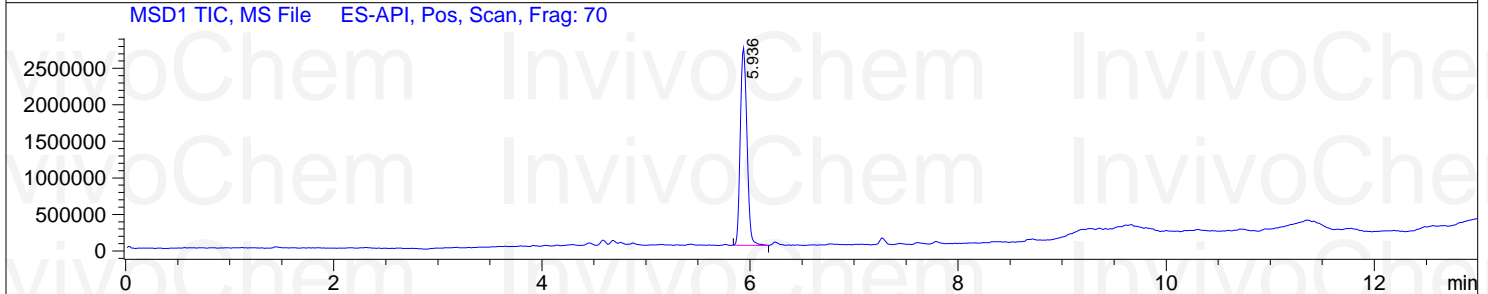
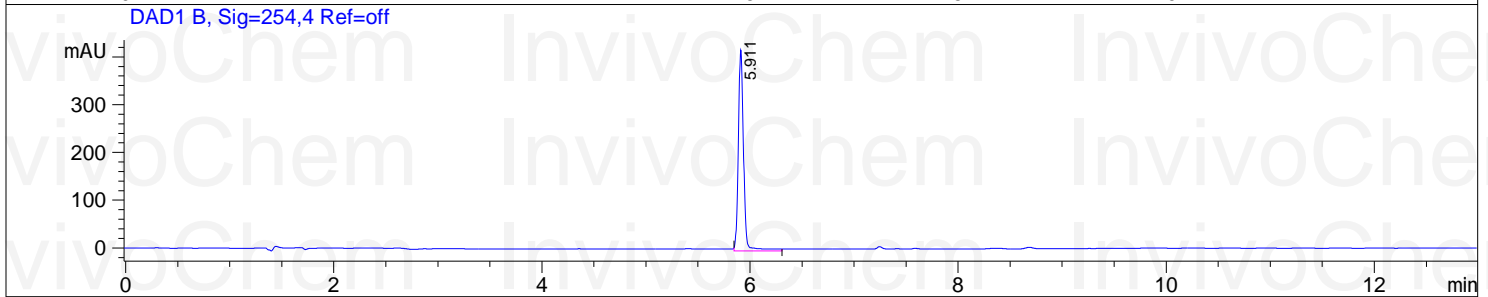
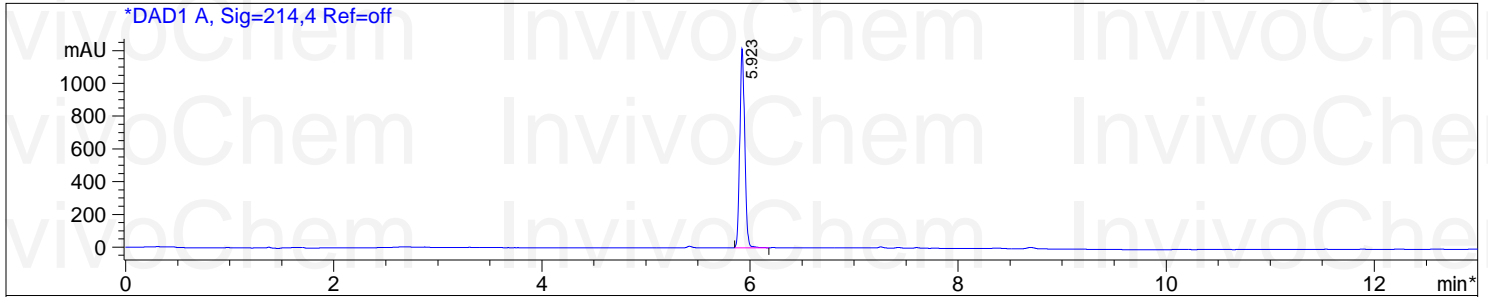
Inj Volume : 3 ul

Gradient: 5-95% B in 8min

Flowrate:1.2ml/min

Column: Zorbax Eclipse XDB- C18 150X4.6mm,5um

Column temperature: 45 C

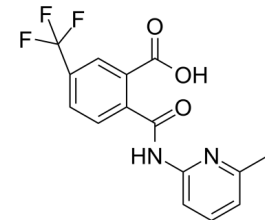


Integration Results for DAD1 A, Sig=214,4 Ref=off

RetTim	Width	Area	Height	Area%
5.92	0.05	4042.44	1217.31	100.00

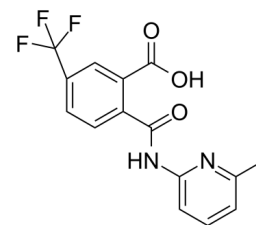
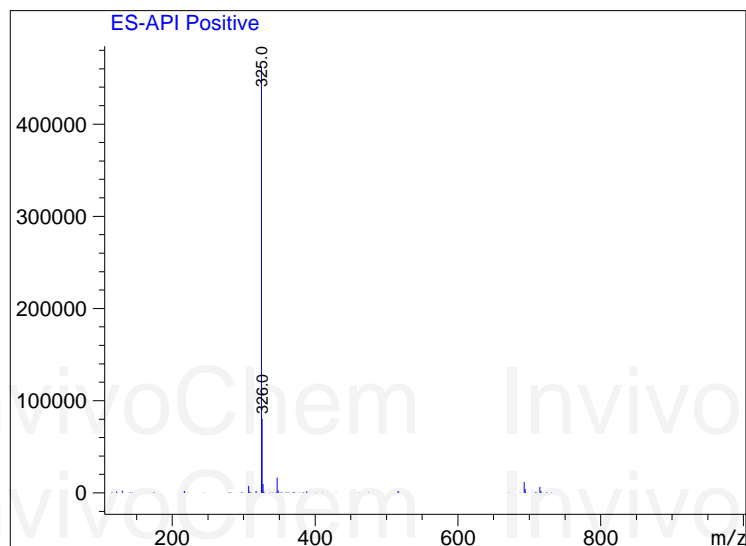
Integration Results for DAD1 B, Sig=254,4 Ref=off

RetTim	Width	Area	Height	Area%
5.91	0.05	1484.60	421.31	100.00



Product Name: AF38469
 InvivoChem Cat #: V6718
 CAS #: 1531634-31-7
 Batch #: V671801
 Formula: C15H11F3N2O3
 Molecular Weight: 324.26

Ret. Time: 5.94 <<<< POSITIVE SPECTRA >>>>



Product Name: AF38469
InvivoChem Cat #: V6718
CAS #: 1531634-31-7
Batch #: V671801
Formula: C15H11F3N2O3
Molecular Weight: 324.26