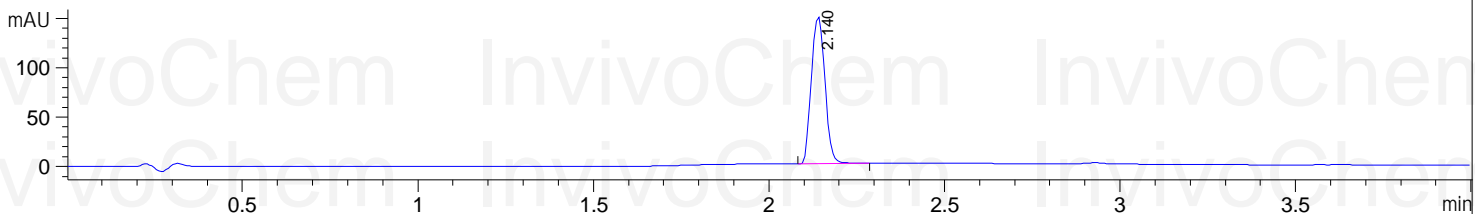


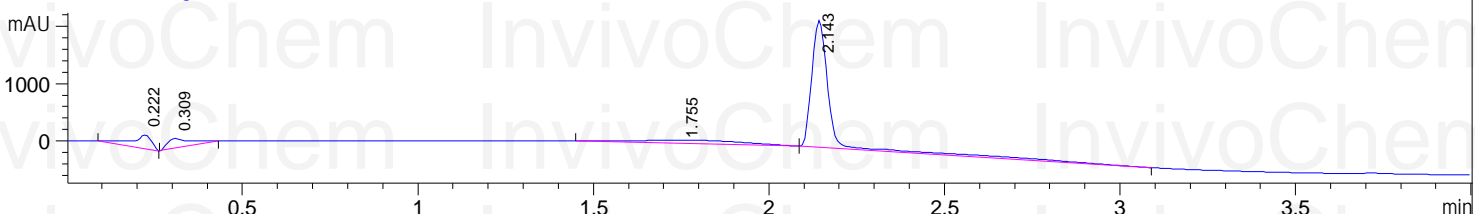
HPLC Analysis for V1448801 Sch 32615

File C:\MassHunte...
Injection Date : 15-Mar-21, 14:12:45 **Tgt Mass(EZX)** :
Sample Name : 3 **Location** : P2-F-11
Acq. Operator : admin **Inj** : 1
Spec. Reported : MS Integration **Inj Volume** : 2 ul
Acq. Method : C:\Users\Public\Documents\ChemStation\1\Methods\SB-C18.M
Analysis Method : C:\Users\Public\Documents\ChemStation\1\Methods\SB-C18.M
Sample Info : WalkUp method: 'SB-C18'
Method Info :

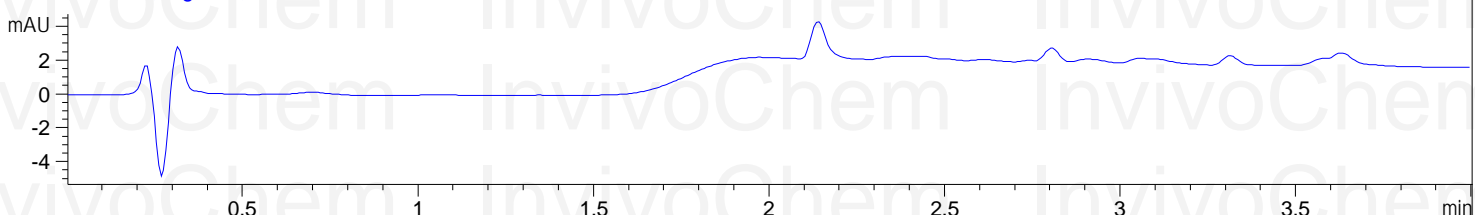
DAD1 A, Sig=254,4 Ref=off



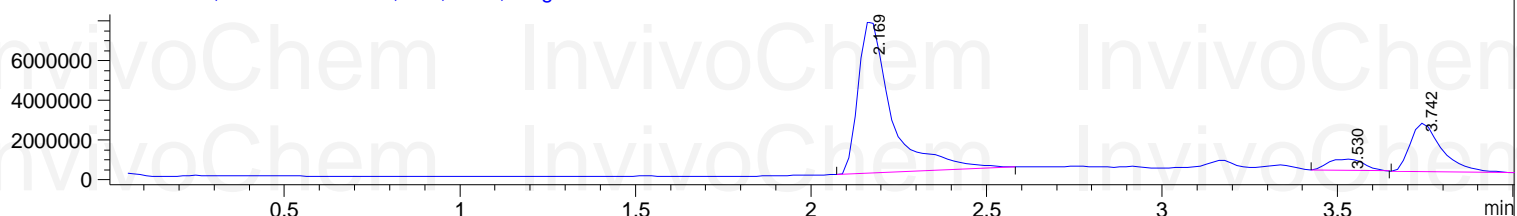
DAD1 C, Sig=214,4 Ref=off



DAD1 G, Sig=280,4 Ref=off



MSD1 TIC, MS File ES-API, Pos, Scan, Frag: 70

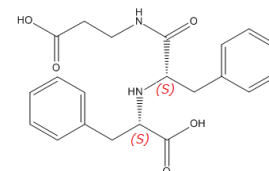


Integration Results for DAD1 A, Sig=254,4 Ref=off

RetTim	Width	Area	Height	Area%
2.14	0.04	402.57	149.43	100.00

Integration Results for DAD1 C, Sig=214,4 Ref=off

RetTim	Width	Area	Height	Area%
0.22	0.06	934.32	237.76	8.70
0.31	0.07	766.50	167.57	7.14
1.75	0.34	1242.08	57.84	11.57
2.14	0.06	7791.65	2214.36	72.58



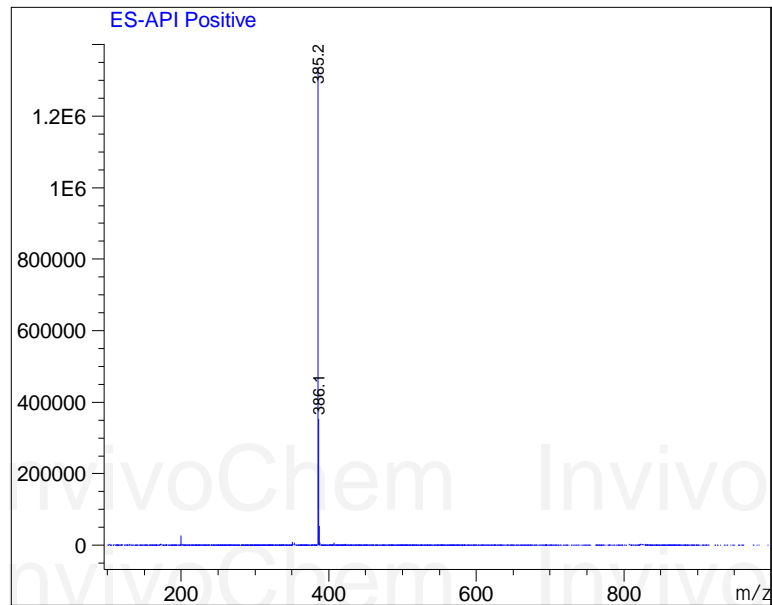
Integration Results for DAD1 G, Sig=280,4 Ref=off

RetTim	Width	Area	Height	Area%
--------	-------	------	--------	-------

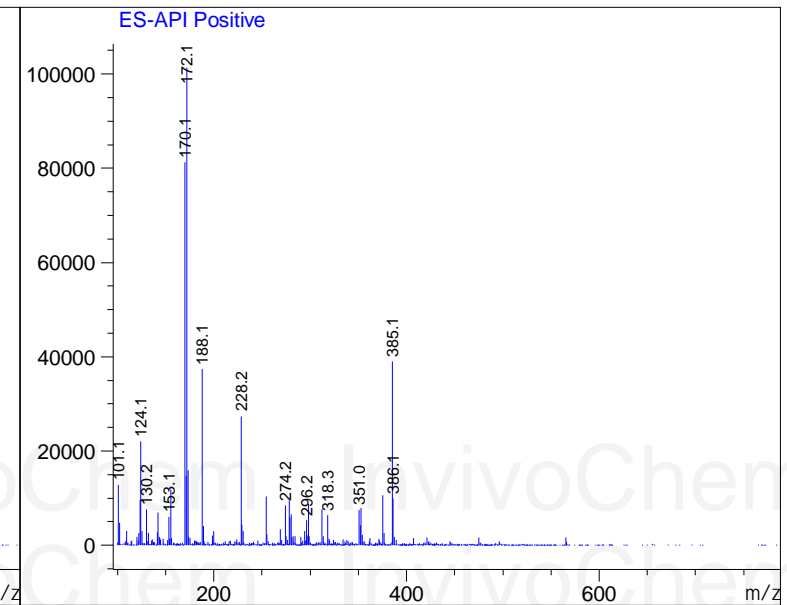
Product Name: Sch 32615
 InvivoChem Cat #: V14488
 CAS #: 83861-02-3
 Batch #: V1448801
 Formula: C21H24N2O5
 Molecular Weight: 384.43

HPLC Analysis for V1448801 Sch 32615

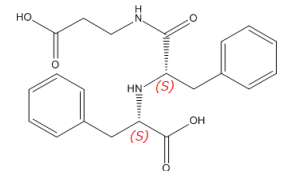
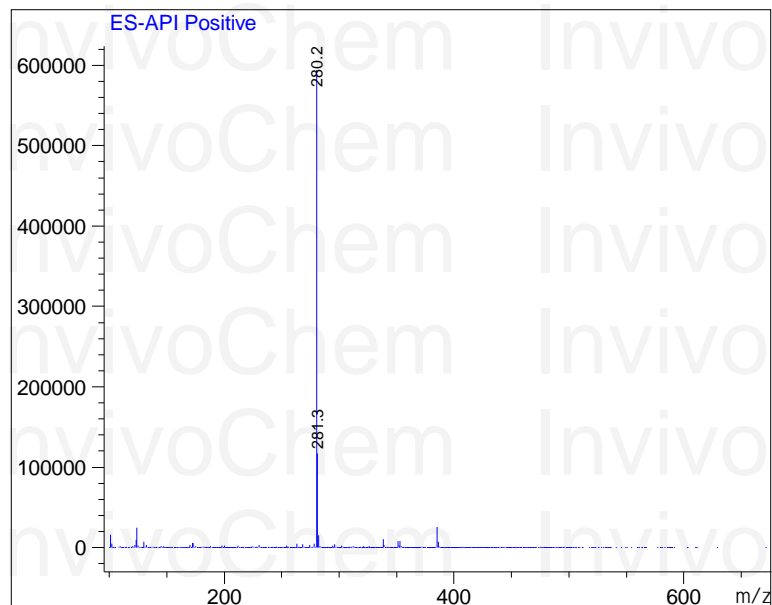
Ret. Time: 2.17 <<<< POSITIVE SPECTRA >>>>



Ret. Time: 3.53



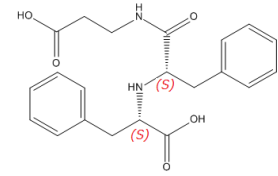
Ret. Time: 3.74



Product Name: Sch 32615
InvivoChem Cat #: V14488
CAS #: 83861-02-3
Batch #: V1448801
Formula: C₂₁H₂₄N₂O₅
Molecular Weight: 384.43

HPLC Analysis for V1448801 Sch 32615

*** End of Report ***



Product Name: Sch 32615
InvivoChem Cat #: V14488
CAS #: 83861-02-3
Batch #: V1448801
Formula: C₂₁H₂₄N₂O₅
Molecular Weight: 384.43

InvivoChem InvivoChem InvivoChem
InvivoChem InvivoChem InvivoChem
InvivoChem InvivoChem InvivoChem
InvivoChem InvivoChem InvivoChem
InvivoChem InvivoChem InvivoChem
InvivoChem InvivoChem InvivoChem
InvivoChem InvivoChem InvivoChem
InvivoChem InvivoChem InvivoChem
InvivoChem InvivoChem InvivoChem
InvivoChem InvivoChem InvivoChem
InvivoChem InvivoChem InvivoChem