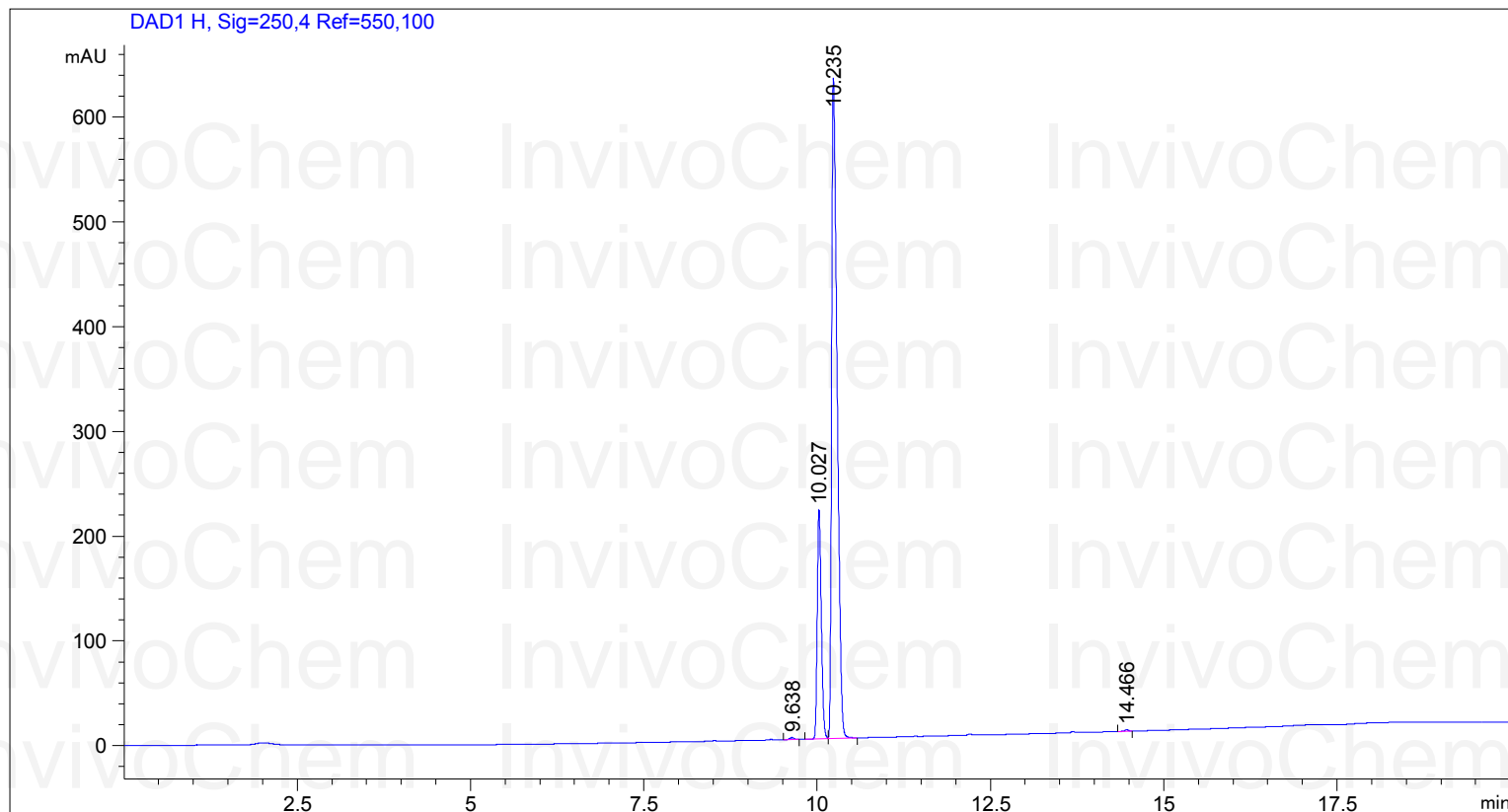


Acq. Operator : SYSTEM  
Acq. Instrument : 12601c

Seq. Line : 2  
Location : Vial 87

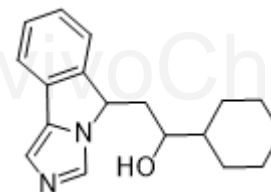
Inj Volume : 2.000 µl  
Different Inj Volume from Sample Entry! Actual Inj Volume : 1.500 µl

Additional Info : Peak(s) manually integrated



Area Percent Report

Sorted By : Signal  
Multiplier : 1.0000  
Dilution : 1.0000  
Use Multiplier & Dilution Factor with ISTDs



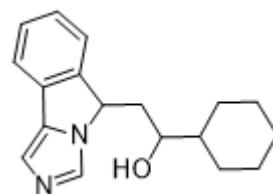
Signal 1: DAD1 H, Sig=250,4 Ref=550,100

Peak #	RetTime [min]	Type	Width [min]	Area [mAU*s]	Height [mAU]	Area %
1	9.638	BB	0.0644	7.78484	1.85543	0.1782
2	10.027	BV	0.0624	887.40710	218.38452	20.3175
3	10.235	VB	0.0837	3466.96069	630.47302	79.3773
4	14.466	BB	0.0537	5.54307	1.57003	0.1269

Product Name: NLG919  
InvivoChem Cat #: V0939  
CAS #: 1402836-58-1  
Batch #: V093901  
Formula: C18H22N2O  
Molecular Weight: 282.38

Totals : 4367.69571 852.28301

=====  
\*\*\* End of Report \*\*\*



Product Name: NLG919  
InvivoChem Cat #: V0939  
CAS #: 1402836-58-1  
Batch #: V093901  
Formula: C18H22N2O  
Molecular Weight: 282.38

InvivoChem InvivoChem InvivoChem  
InvivoChem InvivoChem InvivoChem  
InvivoChem InvivoChem InvivoChem  
InvivoChem InvivoChem InvivoChem  
InvivoChem InvivoChem InvivoChem  
InvivoChem InvivoChem InvivoChem  
InvivoChem InvivoChem InvivoChem  
InvivoChem InvivoChem InvivoChem  
InvivoChem InvivoChem InvivoChem  
InvivoChem InvivoChem InvivoChem  
InvivoChem InvivoChem InvivoChem