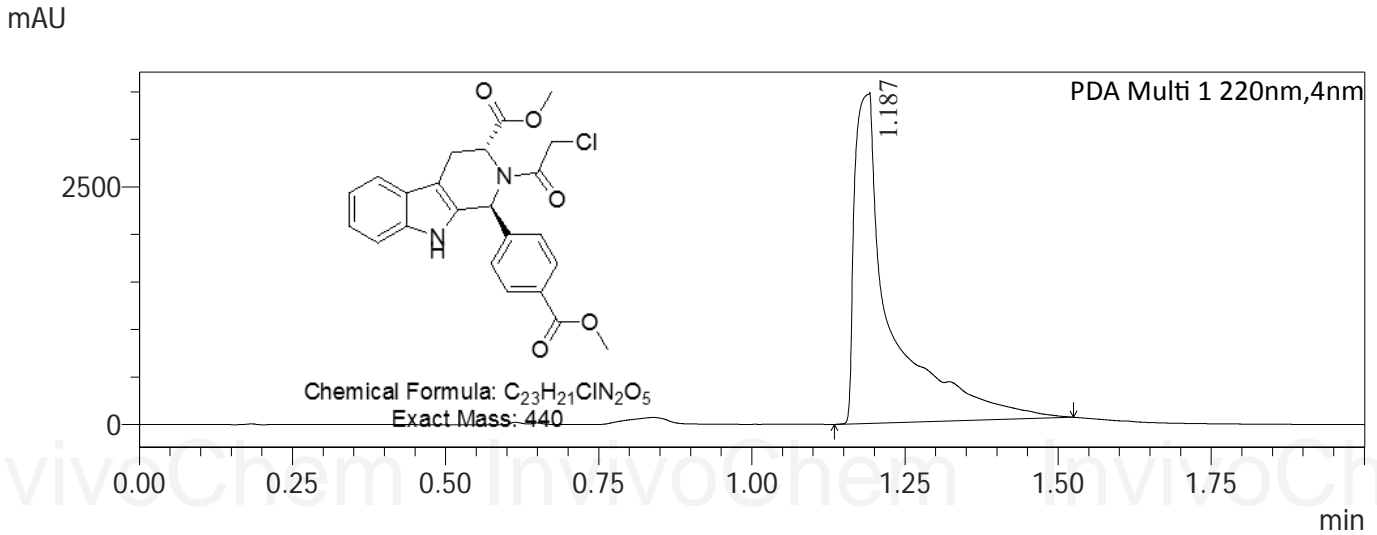


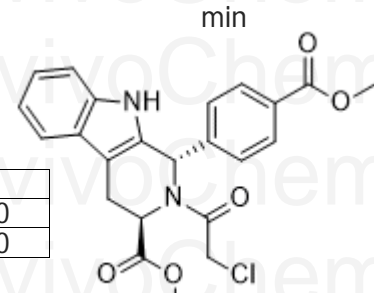
LCMS Analysis for V1406201 RSL3

Chromatogram

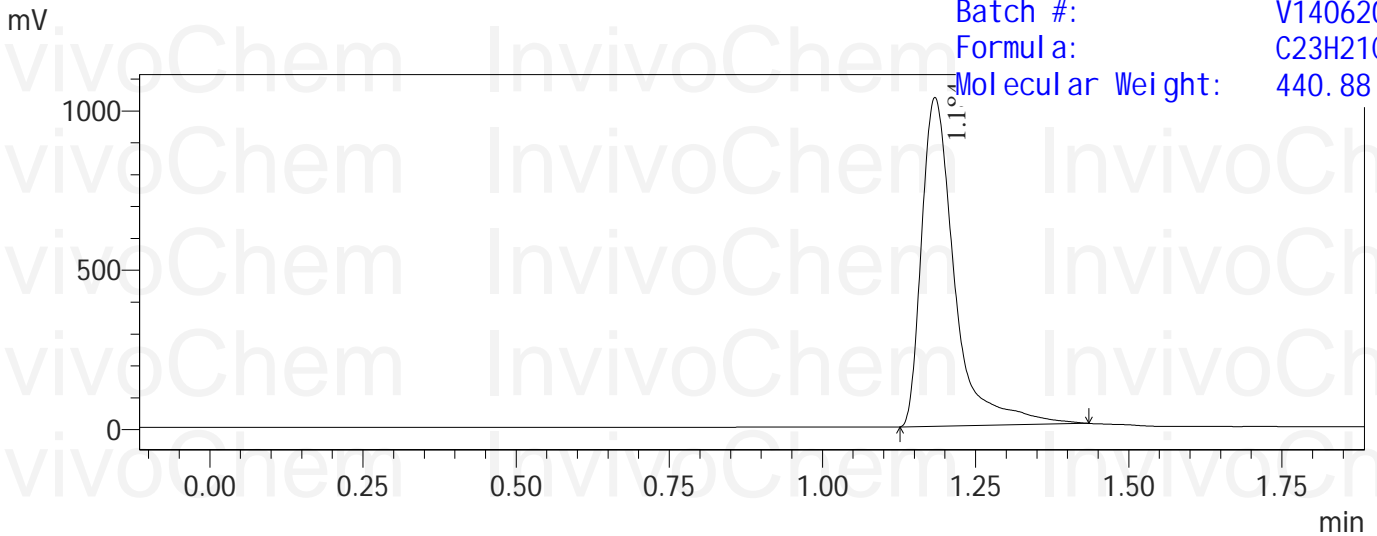


Peak Table

Peak#	Ret. Time	Height	Height%	Area	Area%
1	1.187	3454573	100.000	14389641	100.000
Total		3454573	100.000	14389641	100.000



Product Name: RSL3
 In vivoChem Cat #: V14062
 CAS #: 1219810-16-8
 Batch #: V1406201
 Formula: $C_{23}H_{21}ClN_2O_5$
 Molecular Weight: 440.88

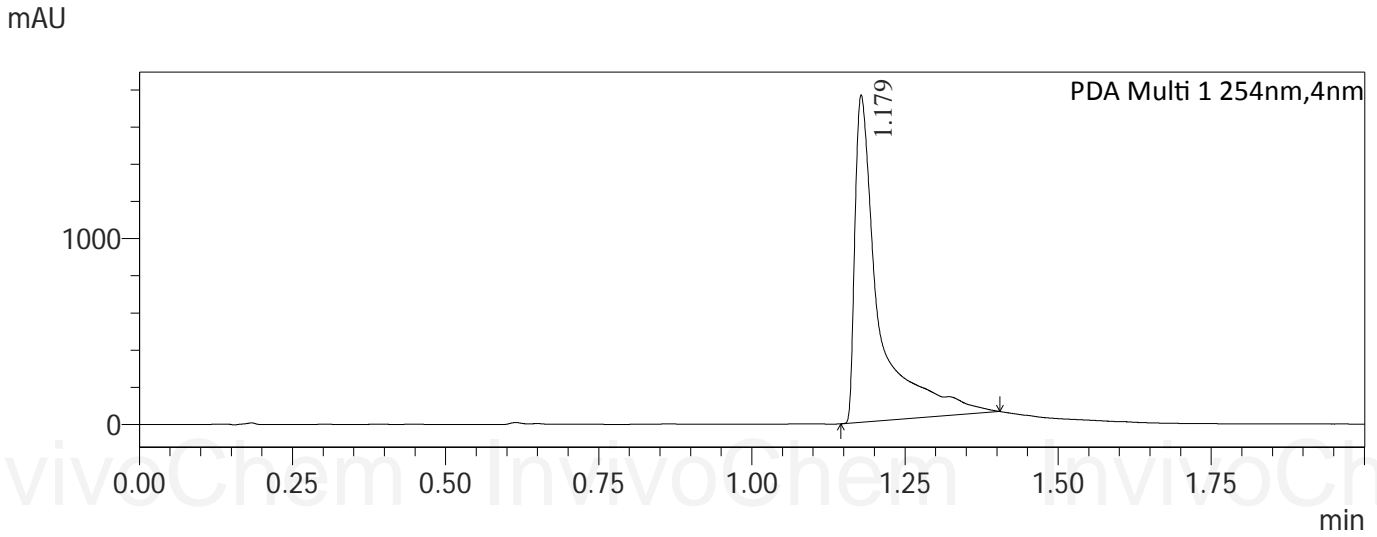


Peak Table

Peak#	Ret. Time	Height	Height%	Area	Area%
1	1.184	1023239	100.000	3878515	100.000
Total		1023239	100.000	3878515	100.000

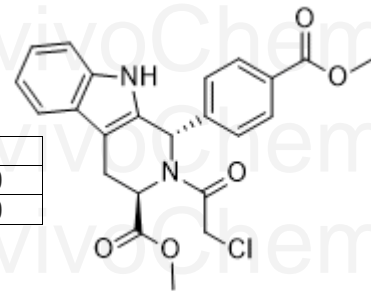
LCMS Analysis for V1406201 RSL3

Chromatogram

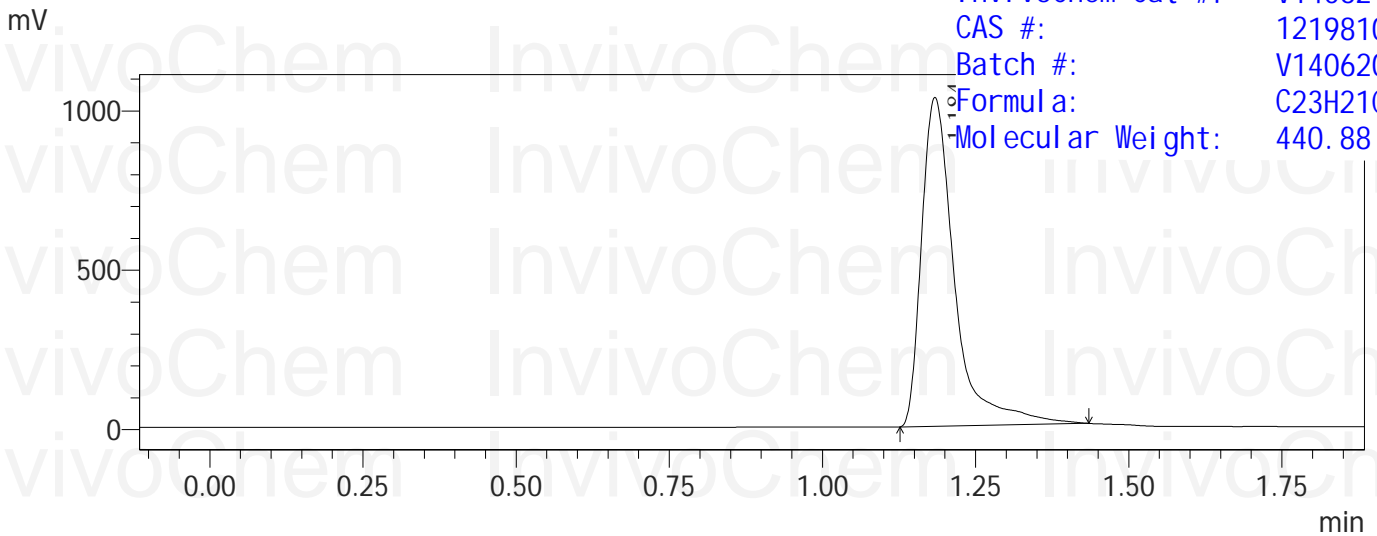


PDA Ch1 254nm

Peak#	Ret. Time	Height	Height%	Area	Area%
1	1.179	1747228	100.000	4854442	100.000
Total		1747228	100.000	4854442	100.000



Product Name: RSL3
 In vivo Chem Cat #: V14062
 CAS #: 1219810-16-8
 Batch #: V1406201
 Formula: C23H21ClN2O5
 Molecular Weight: 440.88

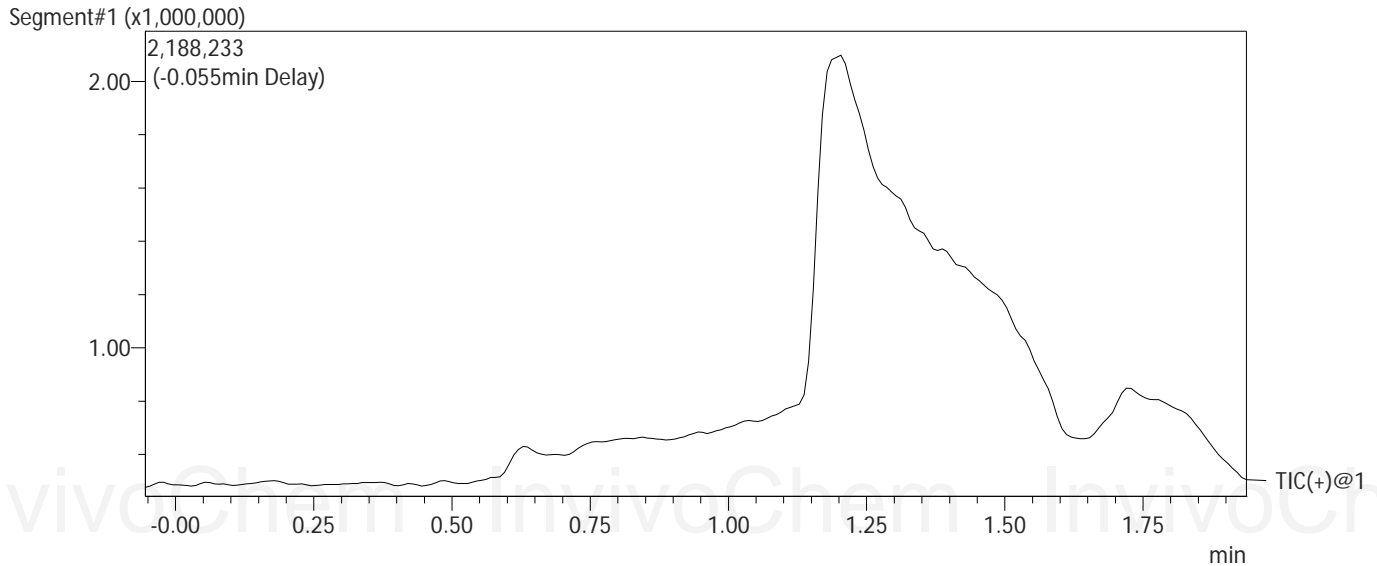


ELSD

Peak#	Ret. Time	Height	Height%	Area	Area%
1	1.184	1023239	100.000	3878515	100.000
Total		1023239	100.000	3878515	100.000

LCMS Analysis for V1406201 RSL3

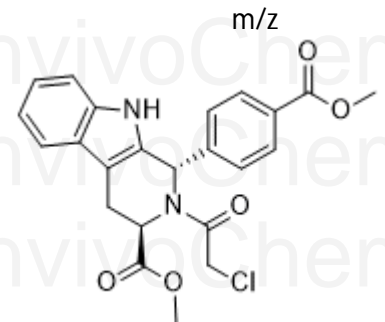
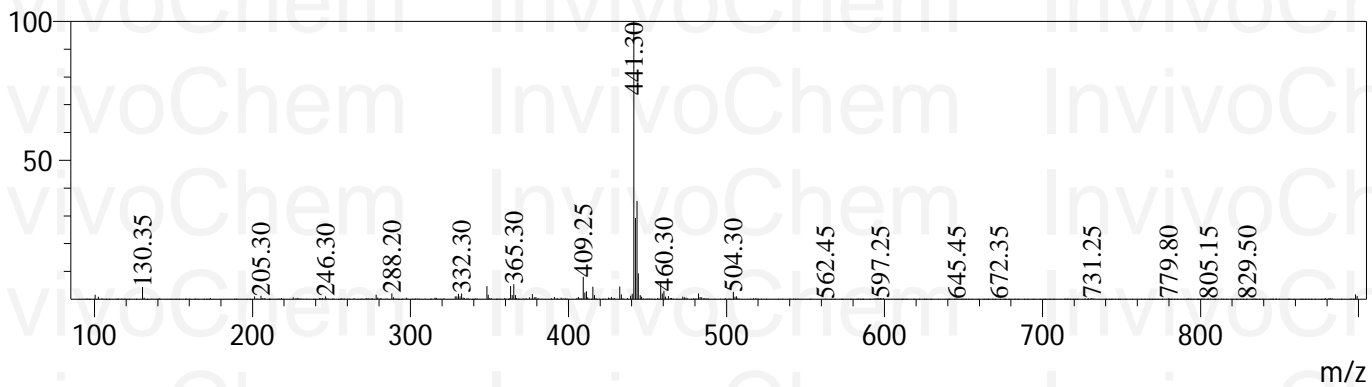
MS Chromatogram



Mass Spectrum

Retention time: 1.178

Spectrum Mode:Single 1.178(149) Base Peak:441.30(533953)
BG Mode:None Segment 1 - Event 1



Product Name:	RSL3
InvivoChem Cat #:	V14062
CAS #:	1219810-16-8
Batch #:	V1406201
Formula:	C23H21ClN2O5
Molecular Weight:	440.88