



## Certificate of Analysis

|                     |         |
|---------------------|---------|
| <b>Product Name</b> | PDM2    |
| <b>Catalog No.</b>  | V4036   |
| <b>Batch No.</b>    | V403601 |

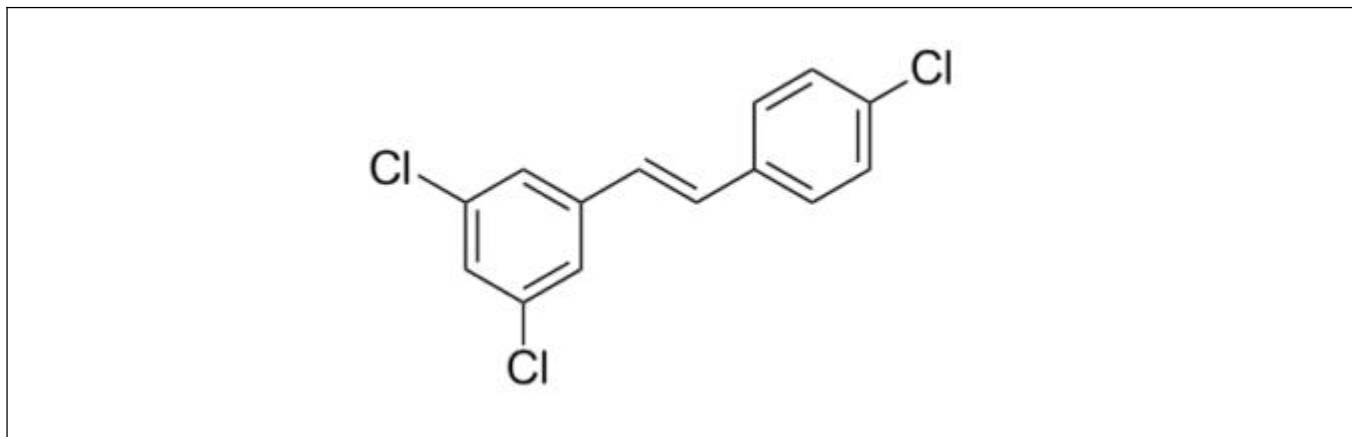
### 1. Physical and Chemical Properties

|                          |  |
|--------------------------|--|
| <b>Appearance</b>        | Powder   |
| <b>Molecular Formula</b> | C <sub>14</sub> H <sub>9</sub> Cl <sub>3</sub> |
| <b>Molecular Weight</b>  | 283.58   |
| <b>Purity</b>            | ≥98.0%   |
| <b>CAS No.</b>           | 688348-25-6                                    |

### 2. Analytical Data

|                      |                           |
|----------------------|---------------------------|
| <b>HPLC</b>          | Indicates ≥98.0% purity   |
| <b>NMR</b>           | Consistent with structure |
| <b>Mass Spectrum</b> | Consistent with structure |

### 3. Structure



### 4. Storage Condition

|                                   |                              |
|-----------------------------------|------------------------------|
| <b>Short term storage (weeks)</b> | 0 - 4 °C under dry condition |
| <b>Long term storage (months)</b> | -20 °C under dry condition   |

Products are for research use only • Not for human or veterinary use