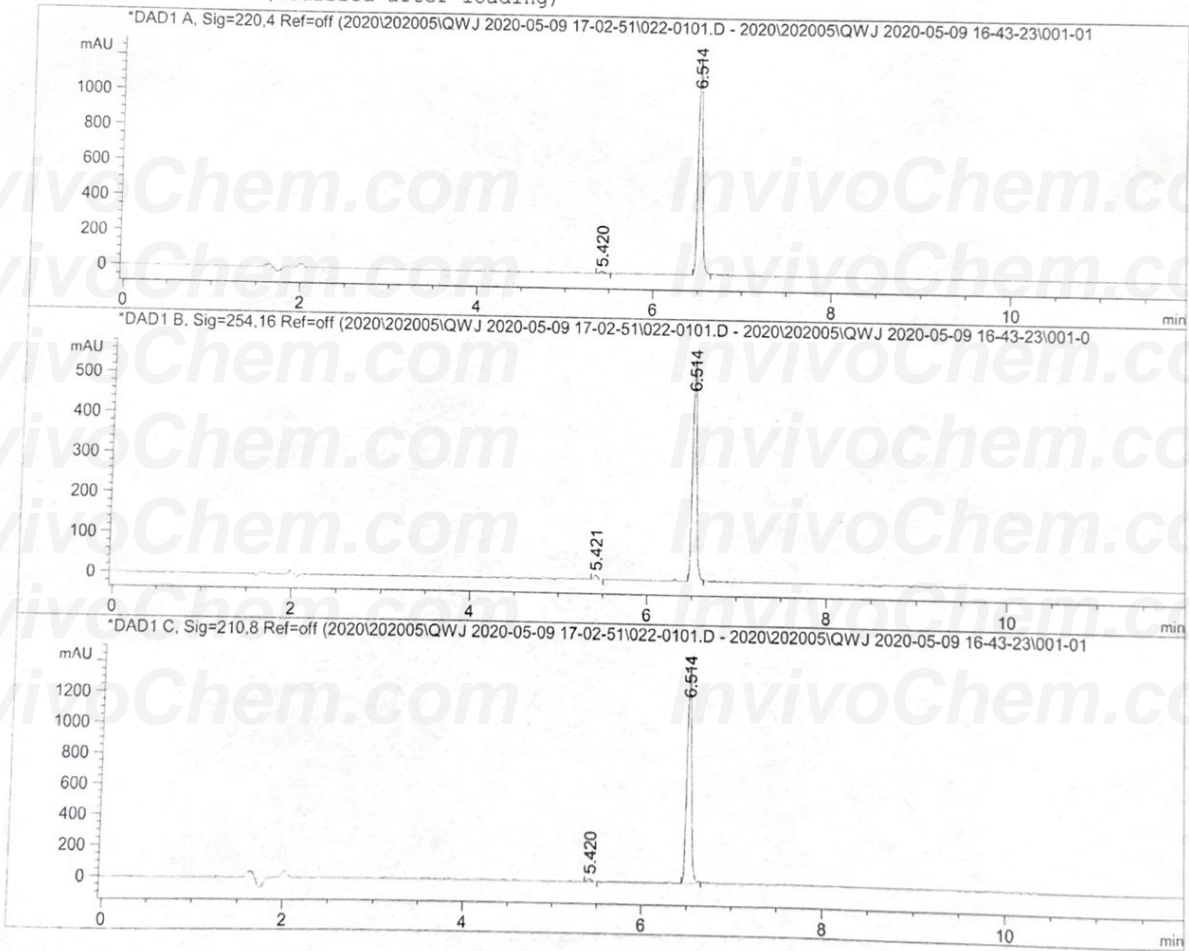


# V11513 E1210 HPLC

Data File C:\CHEM32\1\DATA\2020\202005\QWJ 2020-05-09 17-02-51\022-0101.D  
Sample Name: 8916c3

=====  
Acq. Operator : QC  
Acq. Instrument : Instrument 1  
Injection Date : 5/9/2020 5:03:52 PM  
Seq. Line : 1  
Location : Vial 22  
Inj : 1  
Inj Volume : 1 µl  
Acq. Method : C:\Chem32\1\DATA\2020\202005\QWJ 2020-05-09 17-02-51\LC-12MIN-ACID2.M  
Last changed : 5/6/2020 3:44:45 PM by QC  
Analysis Method : C:\CHEM32\1\DATA\2020\202005\QWJ 2020-05-09 17-02-51\LC-12MIN-ACID2.M  
Last changed : 5/9/2020 5:26:09 PM by QC  
(modified after loading)



Data File C:\CHEM32\1\DATA\2020\202005\QWJ 2020-05-09 17-02-51\022-0101.D  
 Sample Name: 8916c3

=====  
 Area Percent Report  
 =====

Sorted By : Signal  
 Multiplier : 1.0000  
 Dilution : 1.0000  
 Use Multiplier & Dilution Factor with ISTDs

Signal 1: DAD1 A, Sig=220,4 Ref=off  
 Signal has been modified after loading from rawdata file!

Peak #	RetTime [min]	Type	Width [min]	Area [mAU*s]	Height [mAU]	Area %
1	5.420	BB	0.0507	34.32765	10.90268	0.8097
2	6.514	BB	0.0535	4205.37891	1242.18066	99.1903
Totals :				4239.70655	1253.08335	

Signal 2: DAD1 B, Sig=254,16 Ref=off  
 Signal has been modified after loading from rawdata file!

Peak #	RetTime [min]	Type	Width [min]	Area [mAU*s]	Height [mAU]	Area %
1	5.421	BB	0.0458	30.45046	10.49643	1.6206
2	6.514	BB	0.0526	1848.51318	558.21820	98.3794
Totals :				1878.96364	568.71463	

Signal 3: DAD1 C, Sig=210,8 Ref=off  
 Signal has been modified after loading from rawdata file!

Peak #	RetTime [min]	Type	Width [min]	Area [mAU*s]	Height [mAU]	Area %
1	5.420	BB	0.0447	53.23041	18.99538	1.0620
2	6.514	BB	0.0542	4958.85645	1438.53345	98.9380
Totals :				5012.08685	1457.52883	

=====  
 \*\*\* End of Report \*\*\*