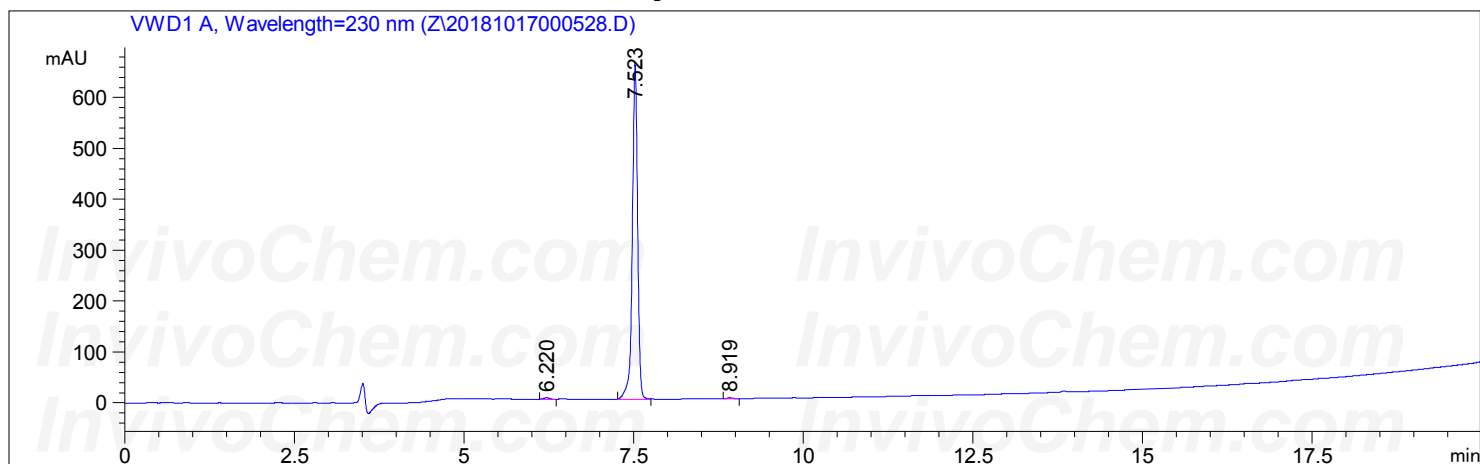


Sample Name: 20181210

```
=====
Acq. Operator   : Z
Acq. Instrument : instr1                      Location : Vial 11
Injection Date  : 10/12/2018 10:00:06
Acq. Method     : C:\CHEM32\1\METHODS\DEF_LC.M
Last changed    : 10/12/2018 09:52:59 by Z
                  (modified after loading)
Analysis Method : C:\CHEM32\1\METHODS\DEF_LC.M
Last changed    : 10/12/2018 09:51:06 by Z
                  (modified after loading)
=====
```



=====
Area Percent Report
=====

```
Sorted By      : Signal
Multiplier:    : 1.0000
Dilution:      : 1.0000
Use Multiplier & Dilution Factor with ISTDs
```

Signal 1: VWD1 A, Wavelength=230 nm

Peak #	RetTime [min]	Type	Width [min]	Area mAU*s	Height [mAU]	Area %
1	6.220	BB	0.0830	17.04453	3.10293	0.4769
2	7.523	BB	0.0818	3545.64795	657.90820	99.1973
3	8.919	BB	0.0799	11.64591	2.17479	0.3258

Totals : 3574.33838 663.18592

=====
*** End of Report ***