



## Certificate of Analysis

|                     |            |
|---------------------|------------|
| <b>Product Name</b> | JSH-23 HCL |
| <b>Catalog No.</b>  | V4321      |
| <b>Batch No.</b>    | V432101    |

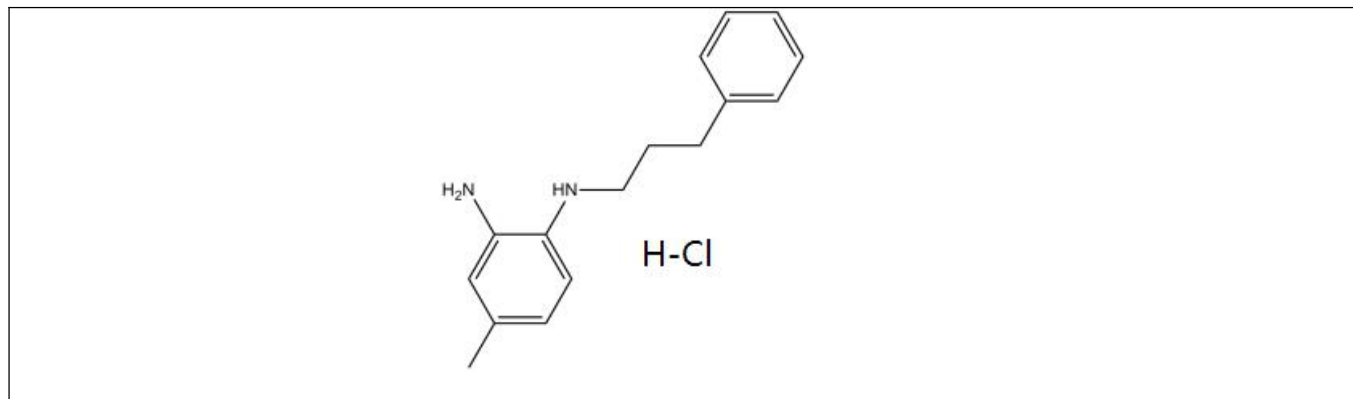
### 1. Physical and Chemical Properties

|                          |   |
|--------------------------|---|
| <b>Appearance</b>        | Powder  |
| <b>Molecular Formula</b> | C <sub>16</sub> H <sub>21</sub> N <sub>2</sub> Cl |
| <b>Molecular Weight</b>  | 276.81  |
| <b>Purity</b>            | ≥98.0%  |
| <b>CAS No.</b>           | 749886-87-1 (free base)                           |

### 2. Analytical Data

|                      |                           |
|----------------------|---------------------------|
| <b>HPLC</b>          | Indicates ≥98.0% purity   |
| <b>NMR</b>           | Consistent with structure |
| <b>Mass Spectrum</b> | Consistent with structure |

### 3. Structure



### 4. Storage Condition

|                                   |                              |
|-----------------------------------|------------------------------|
| <b>Short term storage (weeks)</b> | 0 - 4 °C under dry condition |
| <b>Long term storage (months)</b> | -20 °C under dry condition   |

Products are for research use only • Not for human or veterinary use