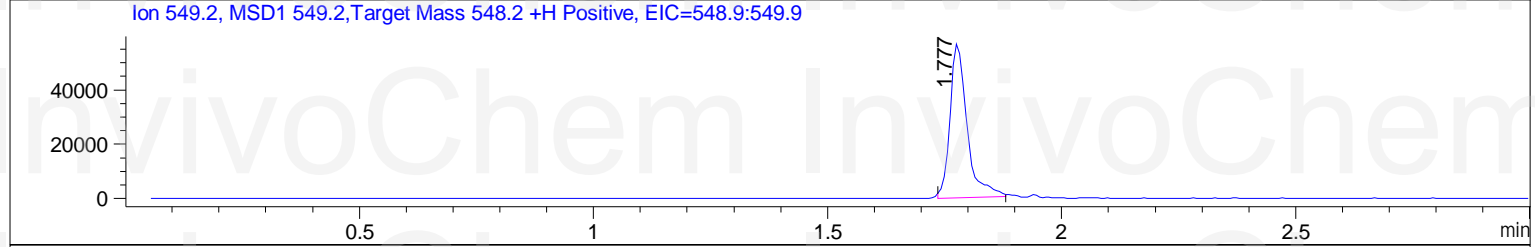
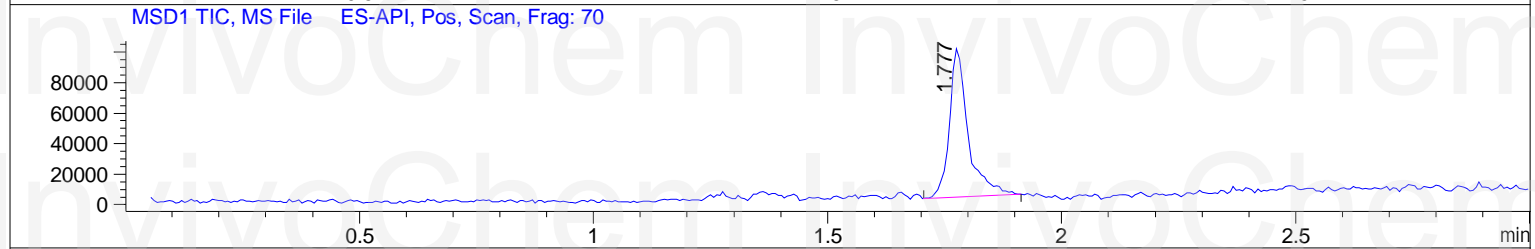
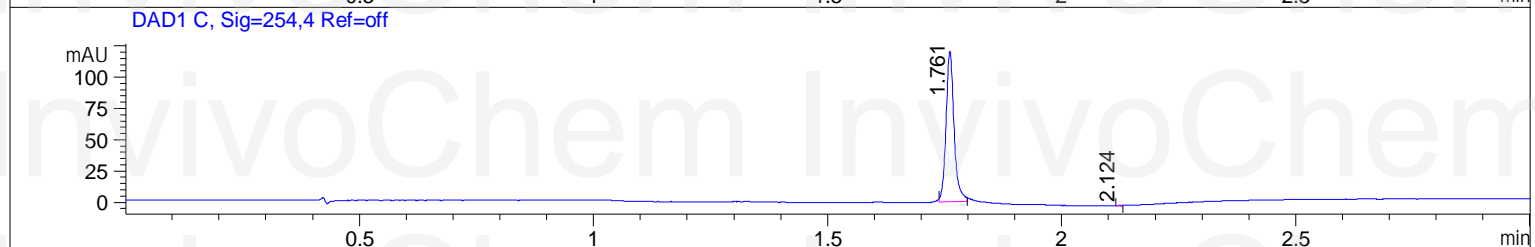
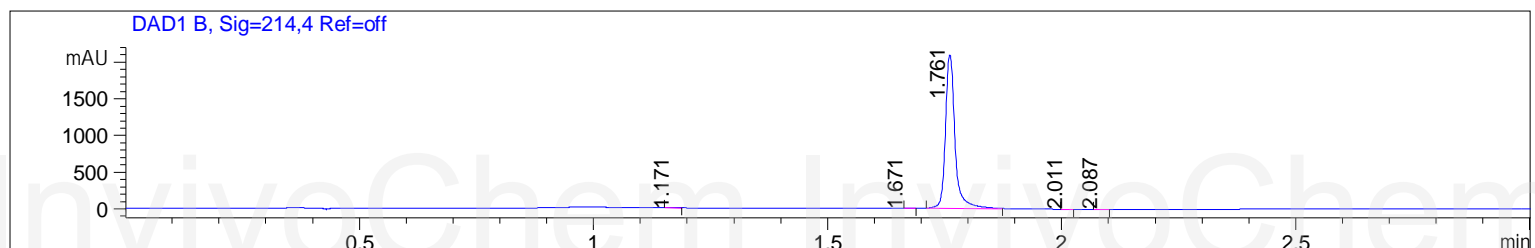




File ..1\DATA\2019\20190417\558\1-POS-3MIN-1.M
Injection Date : 17 Apr 19 10:57 am +0800 **Seq. Line** : 23
Sample Name : BIZ2019-416-WYQ8 **Location** : P1-A-03
Acq. Operator : LQ_1052 **Inj** : 1
Spec. Reported : MS Integration **Inj Volume** : 1 ul
Acq. Method : D:\Chem32\1\data\2019\20190417\558\1-POS-3MIN-1.M
Analysis Method : D:\CHEM32\1\DATA\2019\20190417\558\1-POS-3MIN-1.M
Catalog No : HY-14428 Batch#40113
Method Info : Mobile Phase: A: water(0.01%TFA) B:ACN(0.01%TFA)
Gradient: 5% to 95%B within 1.3 min
Flow Rate :1.8ml/min
Column :SunFire C18, 4.6*50mm,3.5um A-RP-314
Oven Temperature : 45



Integration Results for DAD1 B, Sig=214,4 Ref=off

RetTim	Width	Area	Height	Area%	MS (+)
1.17	0.02	1.44	0.98	0.05	ND
1.67	0.01	0.76	0.89	0.03	ND
1.76	0.02	2990.21	2094.40	99.83	549
2.01	0.02	1.54	1.69	0.05	ND
2.09	0.02	1.42	1.23	0.05	ND

Integration Results for DAD1 C, Sig=254,4 Ref=off

RetTim	Width	Area	Height	Area%	MS (+)
1.76	0.02	143.49	120.28	99.96	549
2.12	0.01	0.05	0.13	0.04	142

Integration Results for MSD1 TIC, MS File

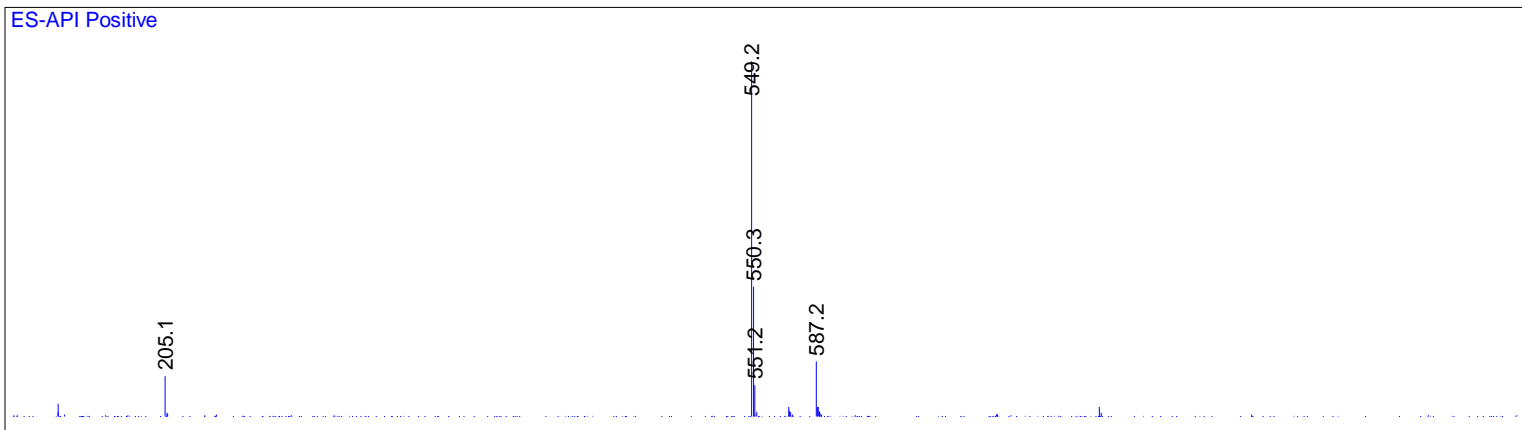
RetTim	Width	Area	Height	Area%	MS (+)
1.78	0.04	270967.16	97780.62	100.00	549



Ret. Time: 1.78

<<<< POSITIVE SPECTRA >>>>

ES-API Positive



InvivoChem InvivoChem
InvivoChem InvivoChem
InvivoChem InvivoChem
InvivoChem InvivoChem
InvivoChem InvivoChem
InvivoChem InvivoChem
InvivoChem InvivoChem