

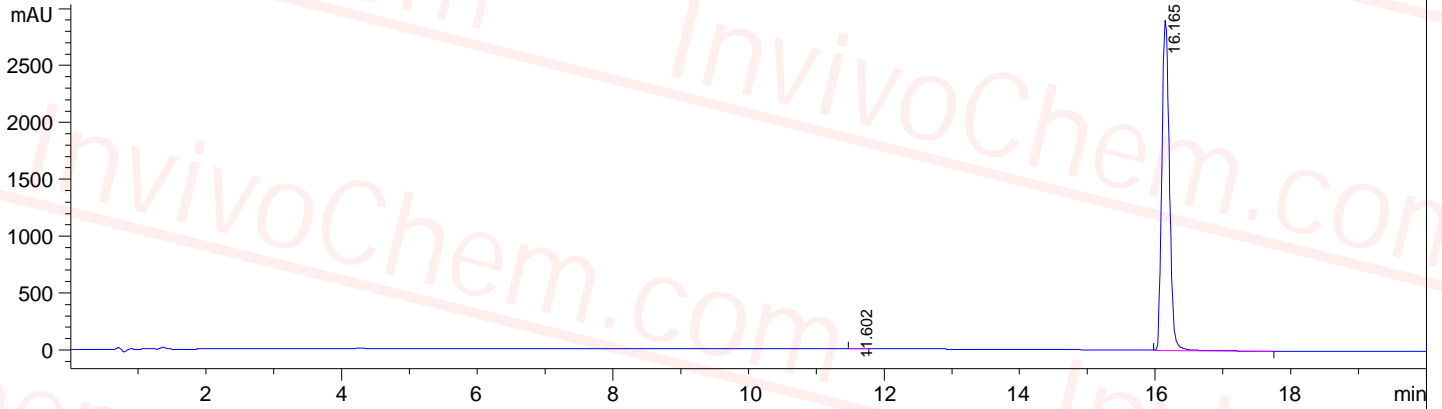
# V262501 Etomoxir Sodium HPLC

Injection Date : 11-Sep-18, 12:16:09  
Sample Name : 130413  
Acq. Operator : 1  
Spec. Reported : Integration  
Method Info :

Tgt Mass(EZX) :  
Location : P2-D-09  
Inj : 0  
Inj Volume : 9 ul

Column: Sunfire C8, 150mm\*4.6mm, 3.5um  
Temperature: 40. Flow rate: 1.5mL/min  
Mobile phase: Water: ACN 70: 30

DAD1 A, Sig=229,4 Ref=off



Integration Results for DAD1 A, Sig=229,4 Ref=off

RetTim	Width	Area	Height	Area%
11.60	0.04	20.82	3.81	0.18
16.17	0.12	11361.32	2900.37	99.82