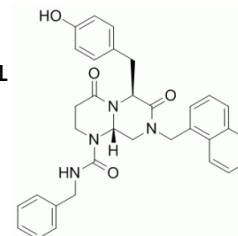


HPLC Analysis for PRI-724

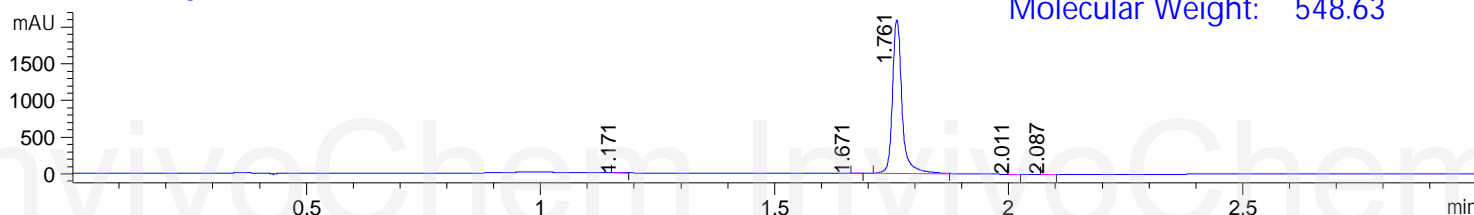


File ..1\DATA\2019\201
 Injection Date : 17 Apr 19 10:57 am +0800 Seq. Line : 23
 Sample Name : BIZ2019-416-WYQ8 Location : P1-A-03
 Acq. Operator : LQ_1052 Inj : 1
 Spec. Reported : MS Integration Inj Volume : 1 ul
 Acq. Method : D:\Chem32\1\data\2019\20190417\558\1-POS-3MIN-1.M
 Analysis Method : D:\CHEM32\1\DATA\2019\20190417\558\1-POS-3MIN-1.M
 Catalog No : HY-14428 Batch#40113
 Method Info : Mobile Phase: A: water(0.01%TFA) B:ACN(0.01%TFA)
 Gradient: 5% to 95%B within 1.3 min
 Flow Rate :1.8ml/min
 Column :SunFire C18, 4.6*50mm,3.5um A-RP-314
 Oven Temperature : 45

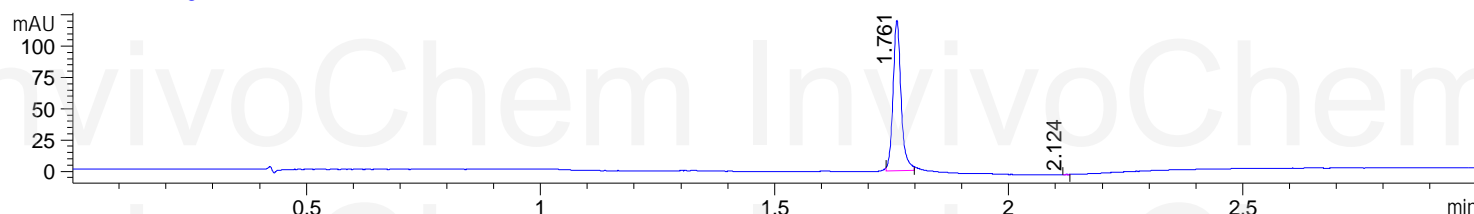


Product Name: PRI-724
 InvivoChem Cat #: V2690
 CAS #: 1422253-38-0
 Batch #: V269001
 Formula: C33H32N4O4
 Molecular Weight: 548.63

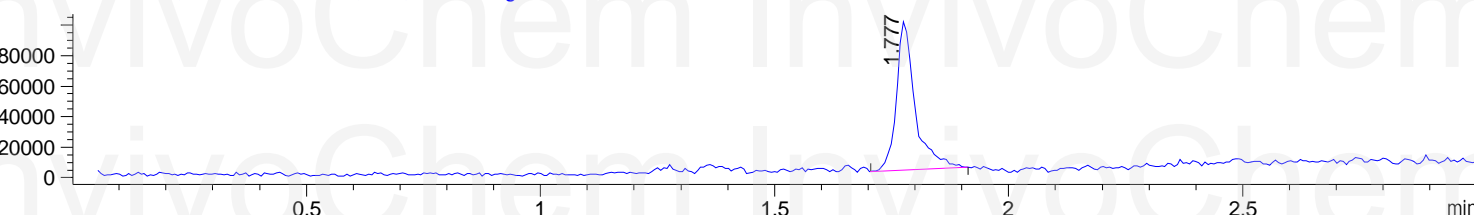
DAD1 B, Sig=214,4 Ref=off



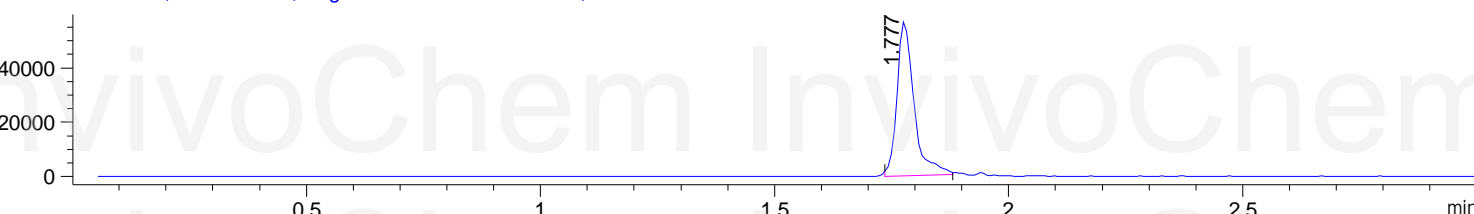
DAD1 C, Sig=254,4 Ref=off



MSD1 TIC, MS File ES-API, Pos, Scan, Frag: 70



Ion 549.2, MSD1 549.2, Target Mass 548.2 +H Positive, EIC=548.9:549.9



Integration Results for DAD1 B, Sig=214,4 Ref=off

RetTim	Width	Area	Height	Area%	MS (+)
1.17	0.02	1.44	0.98	0.05	ND
1.67	0.01	0.76	0.89	0.03	ND
1.76	0.02	2990.21	2094.40	99.83	549
2.01	0.02	1.54	1.69	0.05	ND
2.09	0.02	1.42	1.23	0.05	ND

Integration Results for DAD1 C, Sig=254,4 Ref=off

RetTim	Width	Area	Height	Area%	MS (+)
1.76	0.02	143.49	120.28	99.96	549
2.12	0.01	0.05	0.13	0.04	142

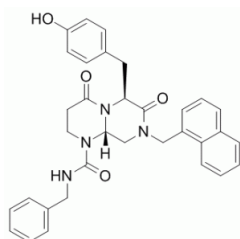
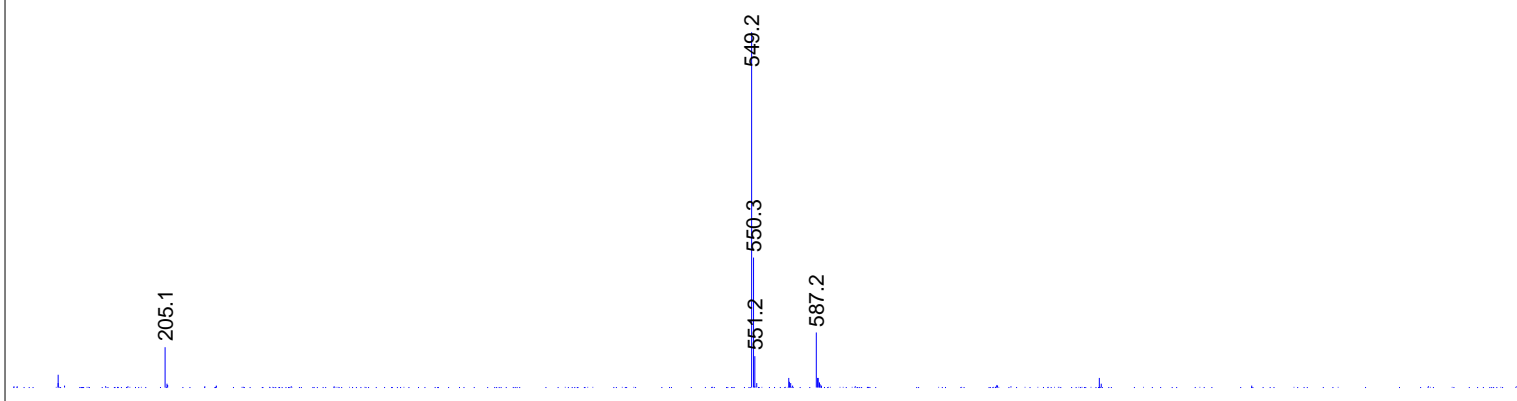
Integration Results for MSD1 TIC, MS File

RetTim	Width	Area	Height	Area%	MS (+)
1.78	0.04	270967.16	97780.62	100.00	549

Ret. Time: 1.78

<<<< POSITIVE SPECTRA >>>>

ES-API Positive



Product Name:	PRI-724
InvivoChem Cat #:	V2690
CAS #:	847591-62-2
Batch #:	V269001
Formula:	C33H32N4O4
Molecular Weight:	548.63
Exact Mass:	548.24236