

V464301 Liraglutide MS

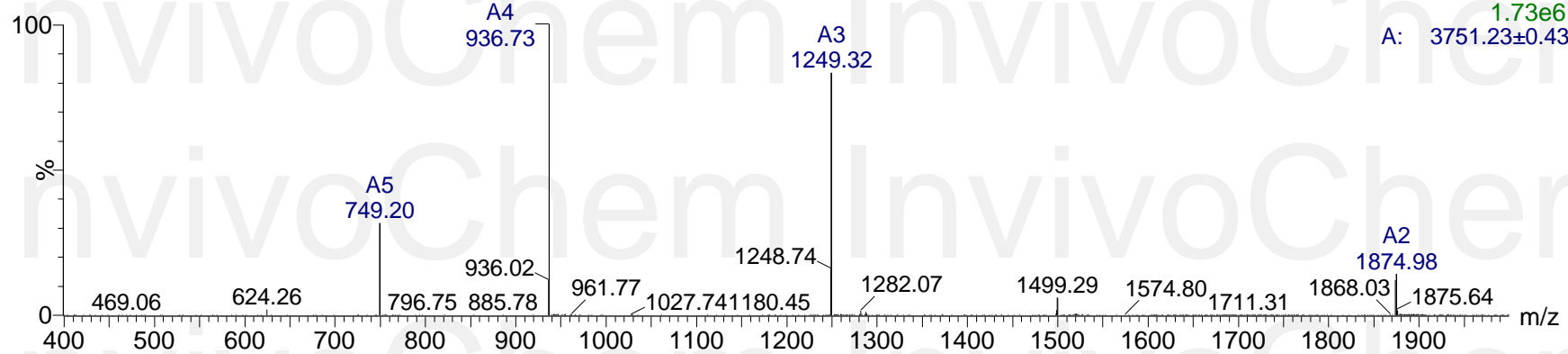
MS Spectrum

20200117

P200117-B012-WJ-F 32 (0.591) Cm (30:32)

Scan ES-
1.73e6

A: 3751.23±0.43



Dissolution	:0.1% HCOOH+ACN	Interface	:ESI	Prerod Bias	:+3.5kv
Date	:2020/01/17 11:06:59	Nebulizing Gas Flow	:500L/hr	Detector	:-0.2kv
Injection	:2.5ul	CDL Temp	:400C	T.Flow	:0.35ml/min
Block Temp	:150	CDL Volt	:0v	B.conc	:50% H2O/50% MEOH
Name	: Liraglutide				
Sequence	: H-His-Ala-Glu-Gly-Thr-Phe-Thr-Ser-Asp-Val-Ser-Ser-Tyr-Leu-Glu-Gly-Gln-Ala-Ala-Lys(Pal-Gama-Glu)-Glu-Phe-Ile-Ala-Trp-Leu-Val-Arg-Gly-Arg-Gly-OH				
Lot.No	: P200117-B012				
Theoretical	: 3751.38				
Observed	: 3751.23				