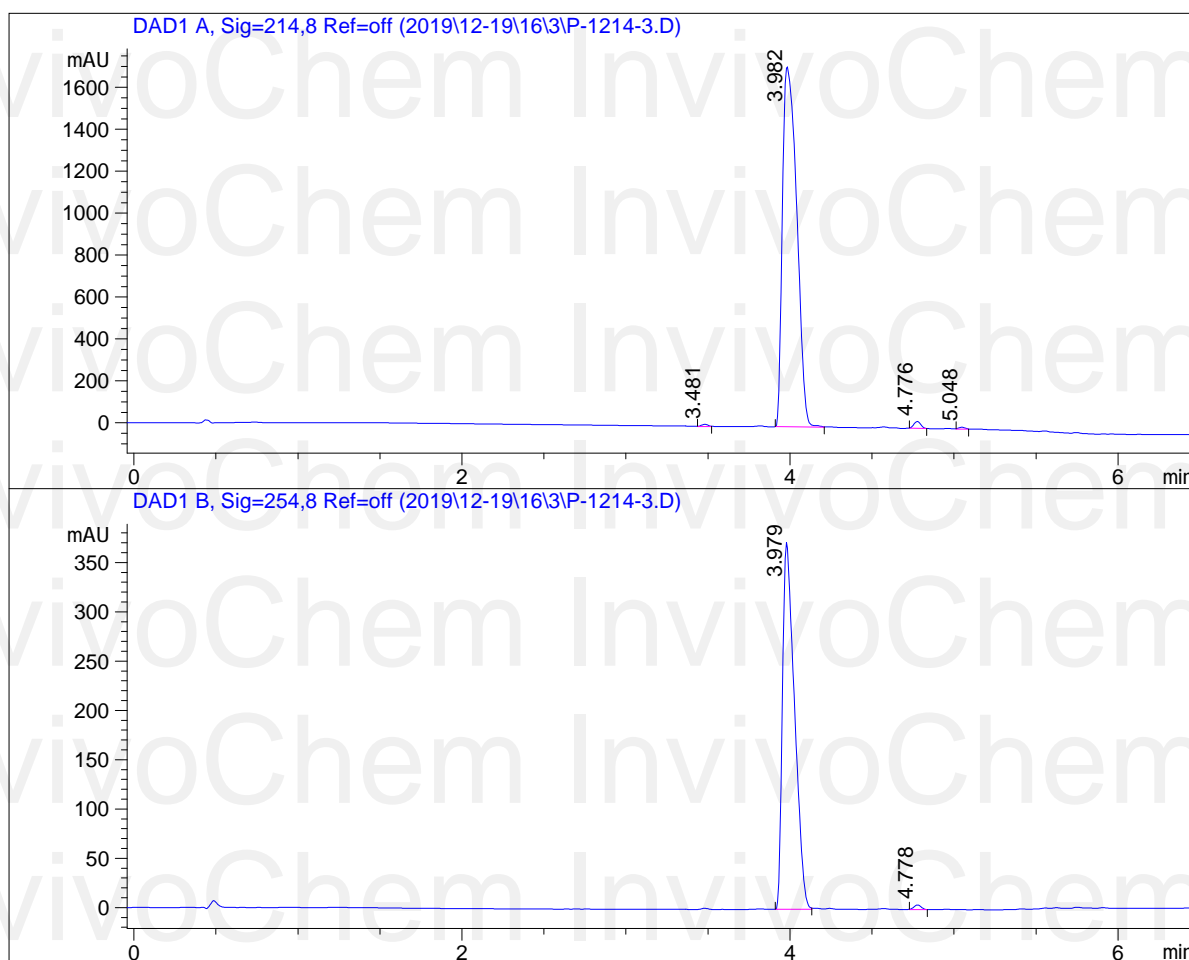


# HPLC Report

Sample Name : P-1214-3  
 Data File : D:\DATA-LCMS-5\2019\12-19\16\3\P-1214-3.D  
 Injection Date : Mon, 16. Dec. 2019 Inj. Vol. : 5ul  
 Acq Operator : lcms-5 Location : Vial 11  
 Acq. Method : D:\data-lcms-5\2019\12-19\16\3\P-05-60-C2.M  
 Method Info.: column:C18;column size:4.6\*50mm ;mobile phase:B(ACN),  
 A(0.02%NH4Ac); gradient(B%):as Acq.Method above



=====  
 Integration Results  
 =====

Signal 1: DAD1 A, Sig=214,8 Ref=off

#	R.T.	Type	Height	Height%	Width	Area	Area %
1	3.481	MM	10.145	0.573	0.048	28.931	0.274
2	3.982	MM	1719.096	97.040	0.101	10402.486	98.572
3	4.776	MM	33.320	1.881	0.048	96.810	0.917
4	5.048	MM	8.974	0.507	0.046	24.966	0.237

Signal 2: DAD1 B, Sig=254,8 Ref=off

#	R.T.	Type	Height	Height%	Width	Area	Area %
1	3.979	MF	373.691	98.790	0.085	1903.137	99.269
2	4.778	MM	4.575	1.210	0.051	14.009	0.731

=====

\*\*\* End of Report \*\*\*

InvivoChem InvivoChem  
InvivoChem InvivoChem  
InvivoChem InvivoChem  
InvivoChem InvivoChem  
InvivoChem InvivoChem  
InvivoChem InvivoChem  
InvivoChem InvivoChem