

V266201 Tomivosertib HPLC

LCMS Analysis Report

Acquired by : System Administrator
Sample Name : A1849590-01-7
Injection Volume : 0.6
Data File : 508A
Report Format File : LCMS2020-PDA+ELSD+TIC+MS.lsr
Date Acquired : 2018-6-13 11:59:54
Comment : Mobile phaseA:Water/5mM NH4HCO3;
Mobile phaseB:Acetonitrile

Instrument Name: Shimadzu LCMS-2020

<<Pump>>

Mode : Binary gradient
Pump A : LC-20ADXR
Pump B : LC-20ADXR
Total Flow : 1.2000 mL/min
B Conc. : 10.0 %

<<Interface>>

Interface : ESI
DL Temperature : 250 C
Nebulizing Gas Flow : 1.50 L/min
Heat Block : 250 C
Drying Gas : On
12.00 L/min

<<Oven>>

Oven Temperature : 40 C

<<MS Parameter>>

--Segment 1 Event 1--

Start Time : 0.00 min
End Time : 4.00 min
Acquisition Mode : Scan
Polarity : Positive
Event Time : 0.50 sec
Detector Voltage : +1.00 kV
Threshold : 0
Start m/z : 90.00
End m/z : 900.00
Scan Speed : 1667 u/sec
Interface Volt. : Use the Data in the Tuning File
DL Volt. : Use the Data in the Tuning File
Qarray DC Voltage : Use the Data in the Tuning File
Qarray DC Voltage : Use the Data in the Tuning File

<<PDA>>

PDA Model : SPD-M20A
Lamp : D2
Start Wavelength : 190 nm
End Wavelength : 400 nm

System Configuration

<<Column>>

Column Name : Poroshell HPH-C18
Length : 50 mm
Internal Diameter : 3.0 mm
Description : 2.7µ m

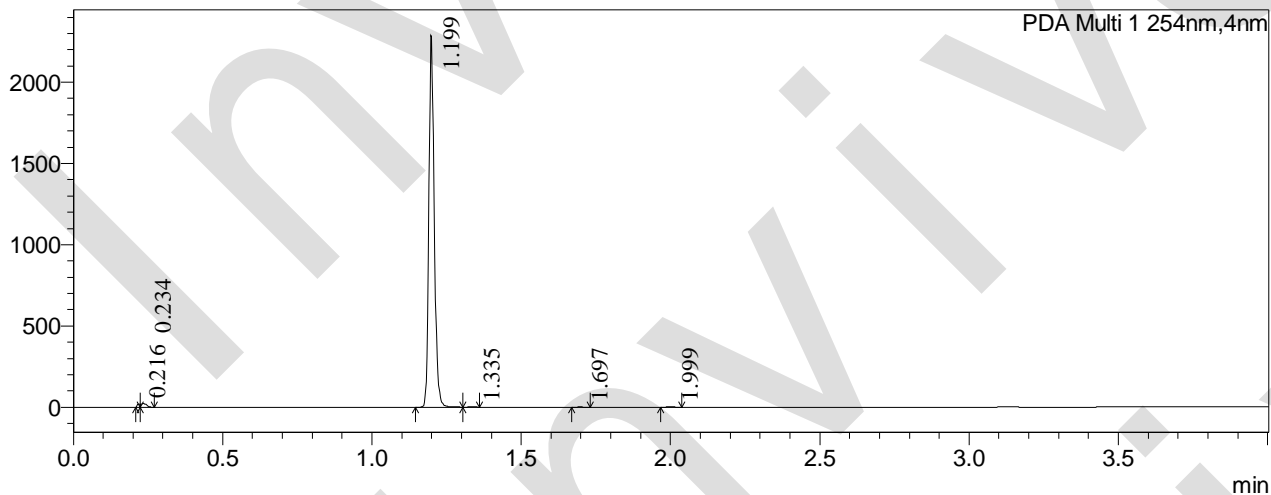
<<LC Time Program>>

Time	Module	Command	Value
0.01	Pumps	Pump B Conc.	10
3.00	Pumps	Pump B Conc.	100
3.70	Pumps	Pump B Conc.	100
3.80	Pumps	Pump B Conc.	10
4.00	Controller	Stop	

V266201 Tomivosertib HPLC

<Chromatogram>

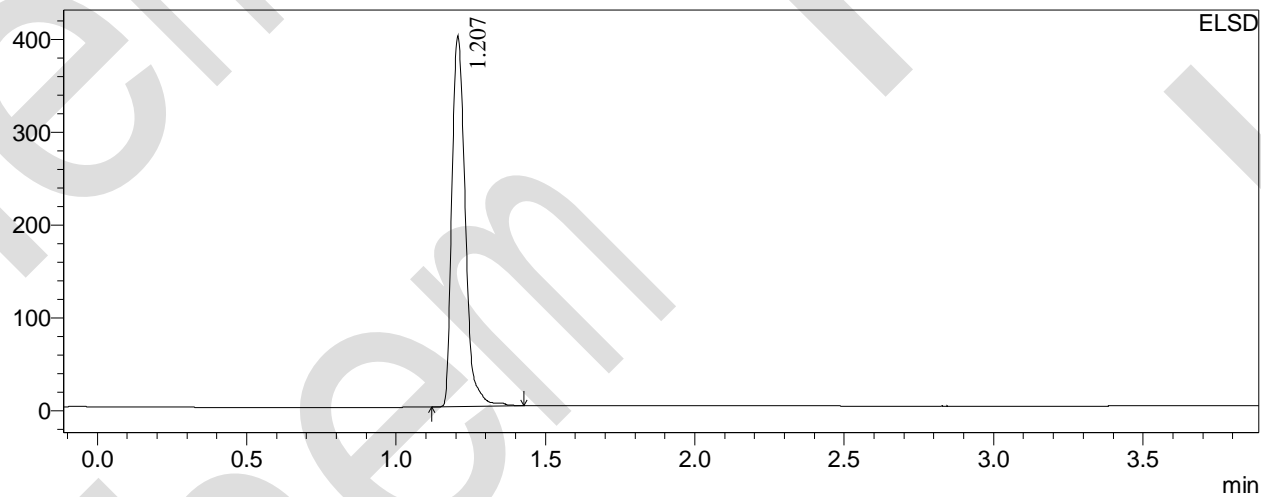
mAU



Peak Table
PDA Ch1 254nm

Peak#	Ret. Time	Height	Height%	Area	Area%
1	0.216	20193	0.864	14389	0.491
2	0.234	21540	0.921	28515	0.974
3	1.199	2287678	97.855	2873968	98.121
4	1.335	3160	0.135	4049	0.138
5	1.697	1970	0.084	2896	0.099
6	1.999	3288	0.141	5195	0.177
Total		2337829	100.000	2929012	100.000

mV

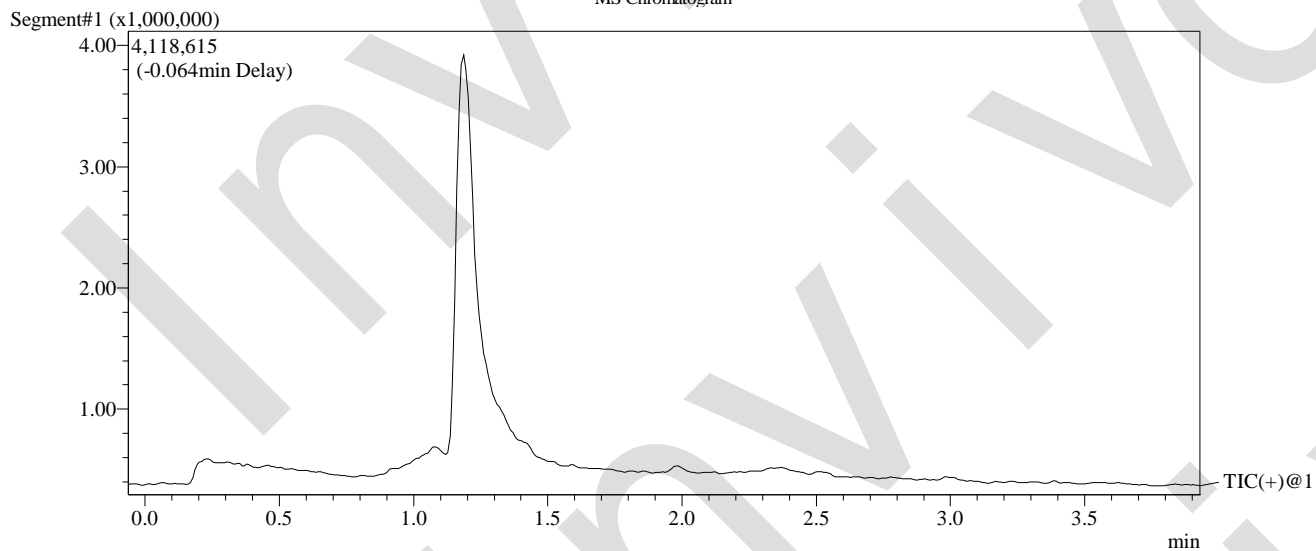


Peak Table
ELSD

Peak#	Ret. Time	Height	Height%	Area	Area%
1	1.207	396148	100.000	1241614	100.000
Total		396148	100.000	1241614	100.000

V266201 Tomivosertib HPLC

MS Chromatogram



Mass Spectrum

Line#:1 R.Time:1.203(Scan#:153)
MassPeaks:348

