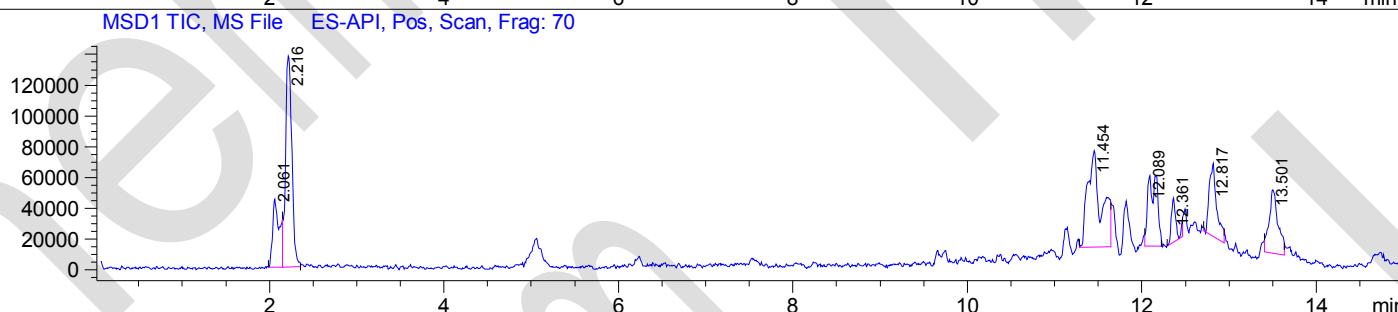
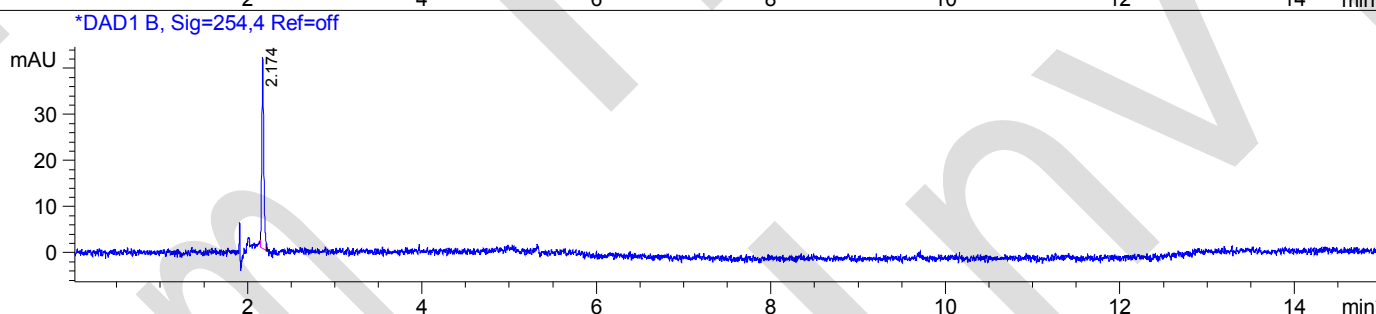
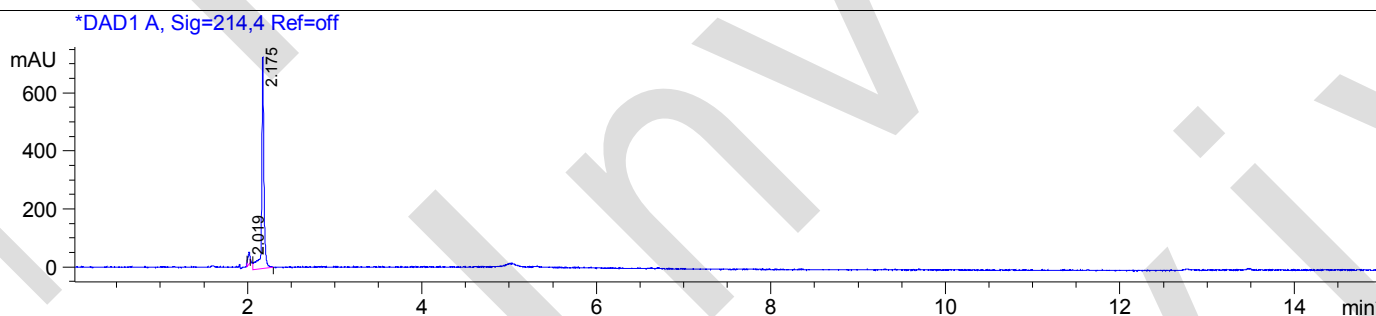


Injection Date : 20 Jan 20
Sample Name : 1403254-99-5

Method Info : Column: XBridge (4.6x 50 mm, 3.5um)
Mobile phase: H2O(10 mmol NH4HCO3) (A) / ACN(B)
Elution program: Gradient from 10 to 95% of B in 1.4min at 1.8ml/min
Temperature: 50 °C
Detection: UV (214 , 4 nm) and MS (ESI, Pos mode , 103 to 1000 amu)



Integration Results for DAD1 A, Sig=214,4 Ref=off

RetTim	Width	Area	Height	Area%
2.02	0.03	68.26	41.05	4.92
2.17	0.03	1320.00	728.41	95.08

Integration Results for DAD1 B, Sig=254,4 Ref=off

RetTim	Width	Area	Height	Area%
2.17	0.02	65.57	41.13	100.00