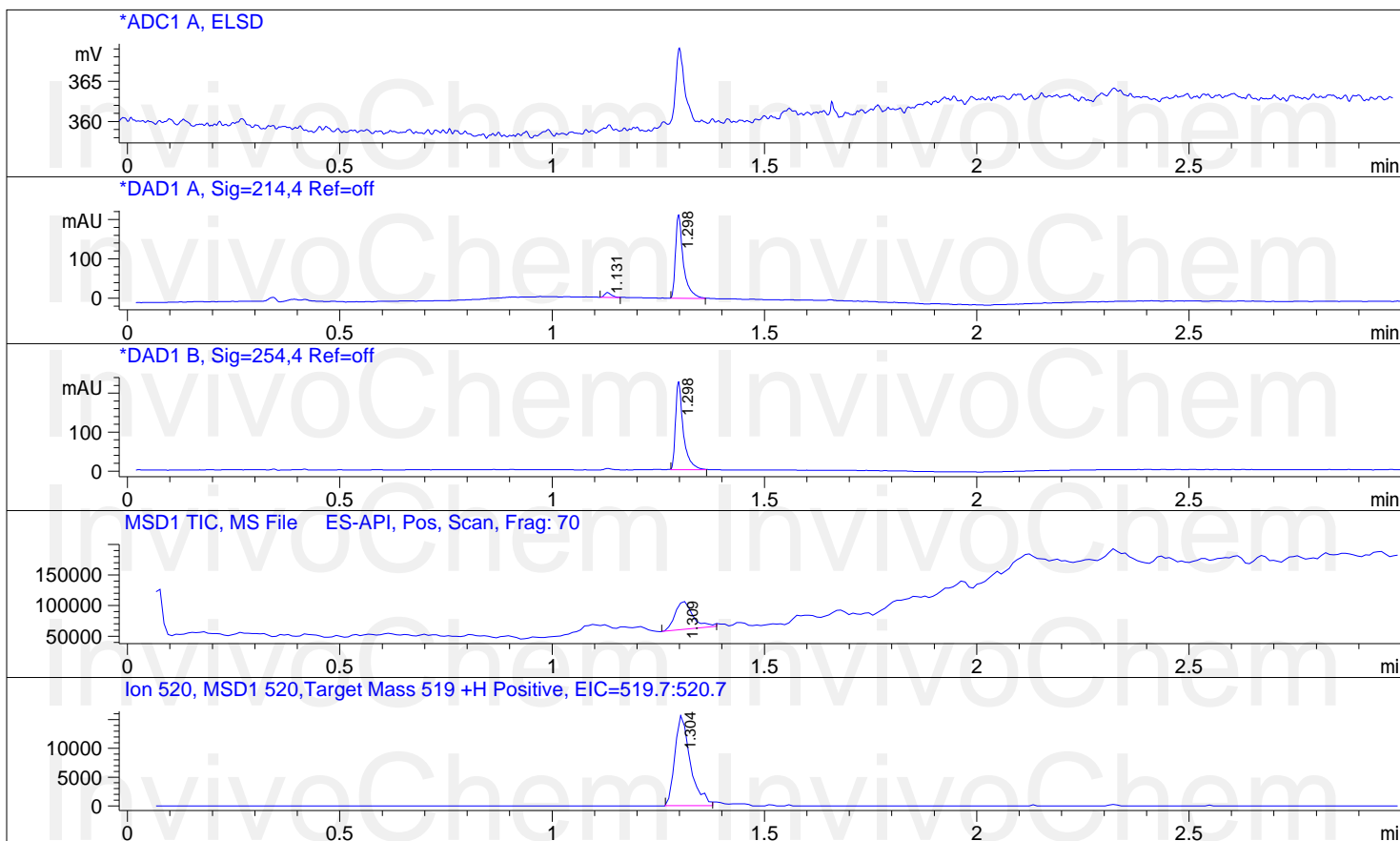




**Injection Date** : 15 Nov 19  
**Sample Name** : gsk8612  
**Acq. Operator** : YDY  
**Spec. Reported** : MS Integration  
**Acq. Method** : E\1-POS-3MIN.M  
**Analysis Method** : E\1-POS-3MIN.M  
**Sample Info** : Easy-Access Method: '1-POS-3MIN' 519.00  
**Method Info** : Mobile Phase : A:water(0.01%TFA) B:ACN(0.01%TFA)  
 Gradient:5% increase to 95%B within 1.3min,95%B for 1.7min  
 Flow Rate :2ml/min  
 Column :Sunfire, 50\*4.6mm,3.5um  
 Column Temperature:50C  
 Detection:UV(214,4nm) and MS(ESI,Pos mode,110 to 1000 amu)



Integration Results for ADC1 A, ELSD

RetTim	Width	Area	Height	Area%
--------	-------	------	--------	-------

Integration Results for DAD1 A, Sig=214,4 Ref=off

RetTim	Width	Area	Height	Area%
1.13	0.02	4.54	4.26	1.37
1.30	0.02	270.05	212.37	98.63

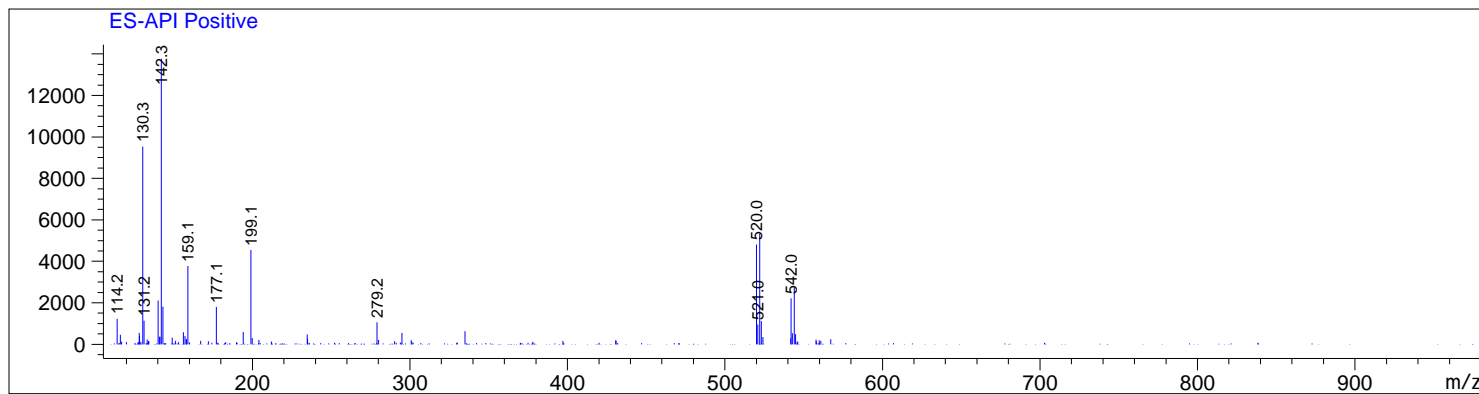
Integration Results for DAD1 B, Sig=254,4 Ref=off

RetTim	Width	Area	Height	Area%
1.30	0.02	287.14	226.75	100.00

**Product Name:** GSK8612  
**InvivoChem Cat #:** V4435  
**CAS #:** 2361659-62-1  
**Batch #:** V443501  
**Formula:** C17H17BrF3N7O2S  
**Molecular Weight:** 520.3292

# LC/MS Analysis for GSK8612

Ret. Time: 1.31



InvivoChem InvivoChem  
InvivoChem InvivoChem  
InvivoChem InvivoChem  
InvivoChem InvivoChem  
InvivoChem InvivoChem  
InvivoChem InvivoChem  
InvivoChem InvivoChem