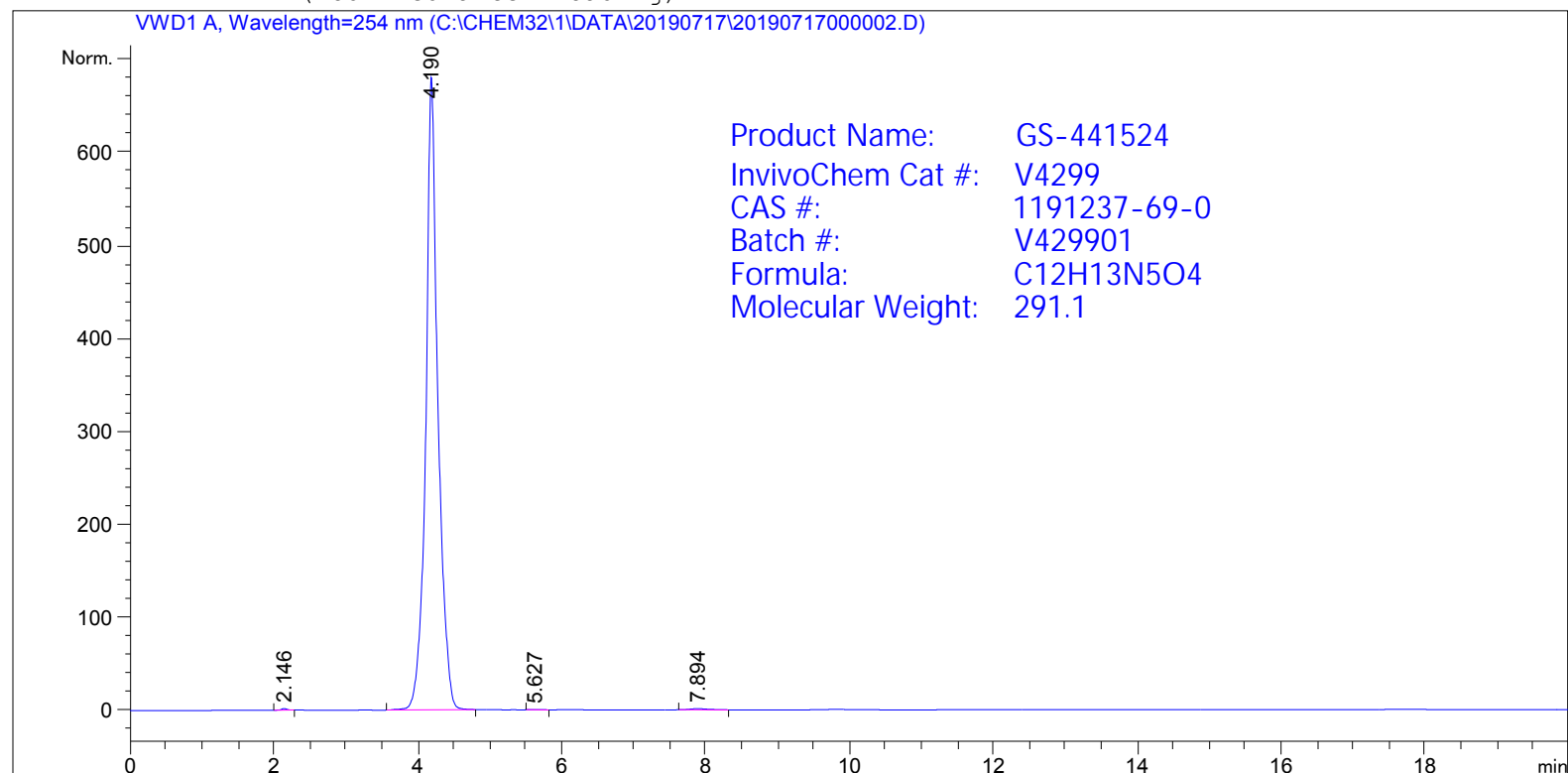




=====  
Acq. Operator :  
Acq. Instrument : Instrument 1 Location : Vial 14  
Injection Date : 7/17/2019 9:10:35 AM Inj Volume : 2.0 µl  
Acq. Method : C:\CHEM32\1\METHODS\441.M  
Last changed : 7/17/2019 9:09:45 AM  
Analysis Method : C:\CHEM32\1\METHODS\冲洗.M  
Last changed : 7/17/2019 9:40:12 AM  
(modified after loading)



=====  
Area Percent Report  
=====

Sorted By : Signal  
Multiplier: : 1.0000  
Dilution: : 1.0000  
Use Multiplier & Dilution Factor with ISTDs

Signal 1: VWD1 A, Wavelength=254 nm

Peak #	RetTime [min]	Type	Width [min]	Area mAU *s	Height [mAU]	Area %
1	2.146	BB	0.0779	9.28920	1.75047	0.1161
2	4.190	BB	0.1645	7972.17383	679.73895	99.5973
3	5.627	BB	0.1290	2.21659	2.58897e-1	0.0277
4	7.894	BB	0.2566	20.73147	1.18459	0.2590

Totals : 8004.41109 682.93291

=====  
\*\*\* End of Report \*\*\*