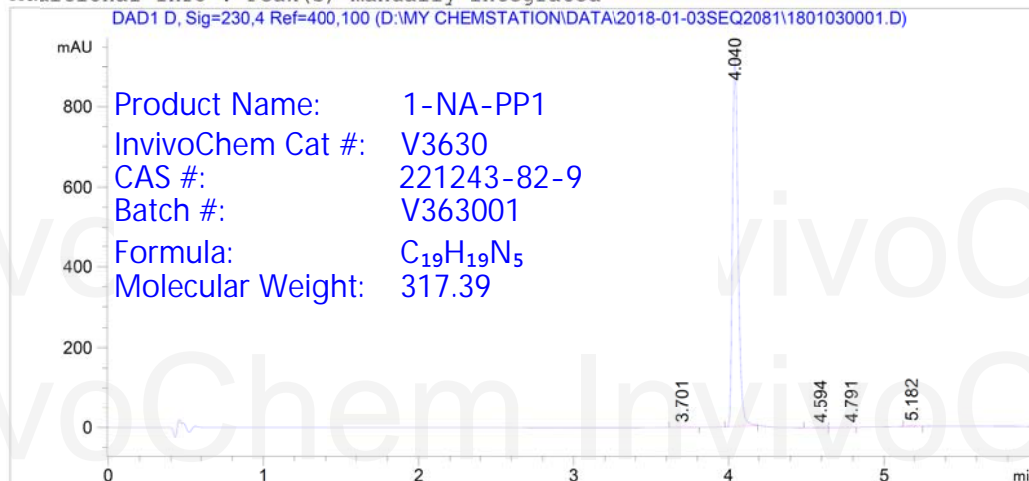


HPLC Analysis for 1-NA-PP1



Acq. Operator : 1
Acq. Instrument : Instrument 1
Injection Date : 18/6/2019 12:41:09 PM
Seq. Line : 1
Location : Vial 17
Inj : 1
Inj Volume : 3.0 µl
Actual Inj Volume : 1.0 µl
Different Inj Volume from Sequence !
Acq. Method : D:\MY CHEMSTATION\DATA\2019-01-03SEQ2081\170511 BI_ATH-M01_A.M
Last changed : 5/11/2017 11:10:48 AM by 1
Analysis Method : D:\CHEM32\1\1.M
Last changed : 1/3/2019 1:06:46 PM by 1
(modified after loading)
Additional Info : Peak(s) manually integrated



Area Percent Report

Sorted By : Signal
Multiplier : 1.0000
Dilution : 1.0000
Use Multiplier & Dilution Factor with ISTDs

Signal 1: DAD1 D, Sig=230,4 Ref=400,100

Peak #	RetTime [min]	Type	Width [min]	Area [mAU*s]	Height [mAU]	Area %
1	3.701	VB	0.0536	1.76408	3.95024e-1	0.0749
2	4.040	BB	0.0391	2345.26807	924.86194	99.5807
3	4.594	BV	0.0556	2.92946	6.37468e-1	0.1244
4	4.791	VV	0.0331	1.14043	4.49872e-1	0.0484
5	5.182	BV	0.0403	4.04229	1.46213	0.1716

Totals : 2355.14432 927.80643

*** End of Report ***

HPLC-UV of 1-NA-PP1 (CAS: 221243-82-9)