



Certificate of Analysis

| | |
|--------------|-------------|
| Product Name | Nateglinide |
| Catalog No. | A-4166 |
| Batch No. | A-416601 |

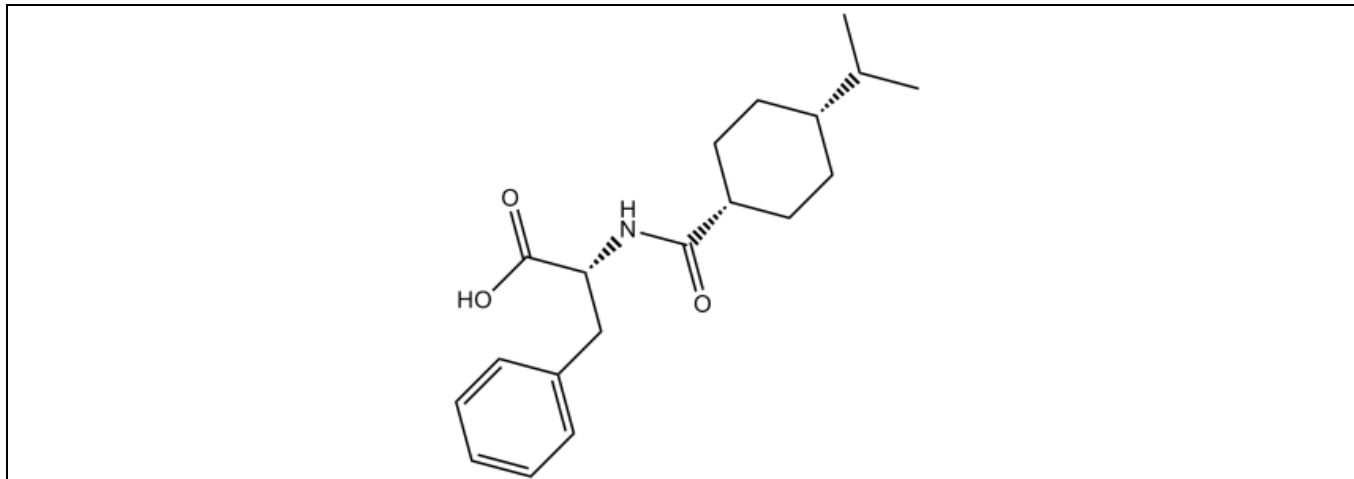
1. Physical and Chemical Properties

| | |
|-------------------|---|
| Appearance | Powder |
| Molecular Formula | C ₁₉ H ₂₇ NO ₃ |
| Molecular Weight | 317.42 |
| Purity | ≥98.0% |
| CAS No. | 105816-04-4 |

2. Analytical Data

| | |
|---------------|---------------------------|
| HPLC | Indicates ≥98.0% purity |
| NMR | Consistent with structure |
| Mass Spectrum | Consistent with structure |

3. Structure



4. Storage Condition

| | |
|----------------------------|------------------------------|
| Short term storage (weeks) | 0 - 4 °C under dry condition |
| Long term storage (months) | -20 °C under dry condition |

Products are for research use only • Not for human or veterinary use