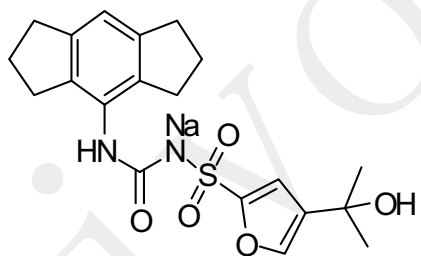
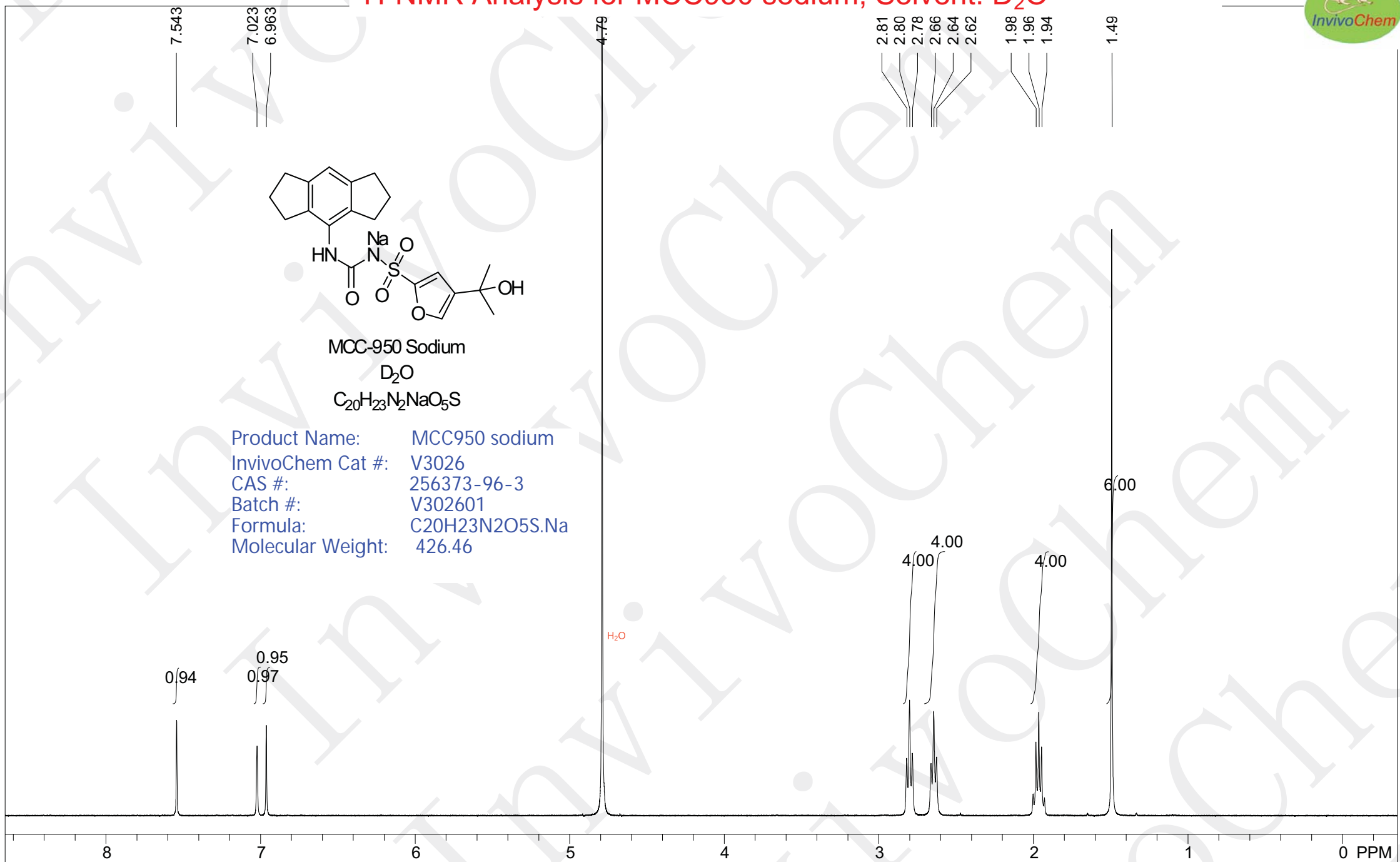


# <sup>1</sup>H-NMR Analysis for MCC950 sodium; Solvent: D<sub>2</sub>O



MCC-950 Sodium  
D<sub>2</sub>O  
C<sub>20</sub>H<sub>23</sub>N<sub>2</sub>NaO<sub>5</sub>S

Product Name: MCC950 sodium  
InvivoChem Cat #: V3026  
CAS #: 256373-96-3  
Batch #: V302601  
Formula: C<sub>20</sub>H<sub>23</sub>N<sub>2</sub>O<sub>5</sub>S.Na  
Molecular Weight: 426.46



WNMR-I-400MHz, D2O,		USER: Administr -- DATE: Tue Jan 23 01:12:02 1970					
F1: 401.415	F2: 1.000	SW1: 11013		OF1: 1910.2		PTS1d: 131072	
EX: s1pul		PW: ? usec	PD: ? sec	NA: 8	LB: 0.0		Nuts - \$pdata