

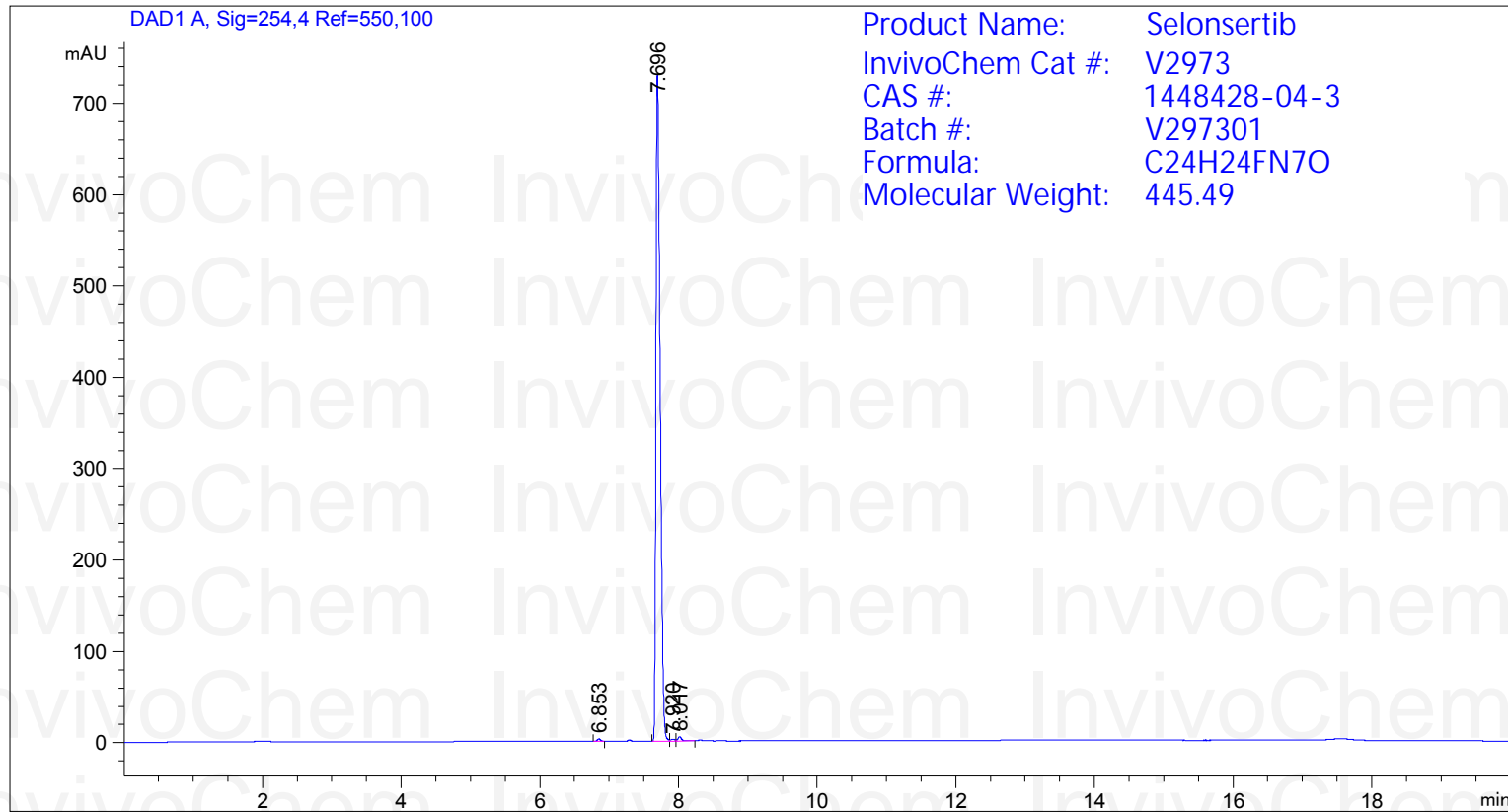
HPLC Analysis for Selonsertib



=====

Acq. Operator : SYSTEM	Seq. Line : 6
Acq. Instrument : 12601c	Location : Vial 41
	1
	Inj Volume : 2.000 µl
Different Inj Volume from Sample Entry! Actual Inj Volume : 2.500 µl	

Additional Info : Peak(s) manually integrated



=====
Area Percent Report
=====

Sorted By : Signal
Multiplier : 1.0000
Dilution : 1.0000
Use Multiplier & Dilution Factor with ISTDs

Signal 1: DAD1 A, Sig=254,4 Ref=550,100

Peak #	RetTime [min]	Type	Width [min]	Area [mAU*s]	Height [mAU]	Area %
1	6.853	BB	0.0496	7.85009	2.46536	0.2327
2	7.696	BV	0.0647	3072.86011	728.99152	99.0263
3	7.920	VV	0.0655	8.43788	1.93091	0.2416
4	8.017	VB	0.0540	17.06205	4.73858	0.4993

Totals : 3106.21013 738.12637