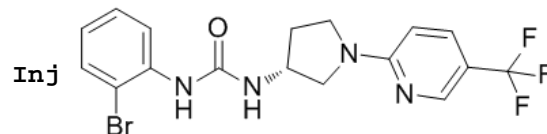


HPLC Analysis for SB-705498



LC/MS Report

1-LCMS



Method Info : Mobile Phase : A: water (0.1%FA) B: Acetonitrile (0.1%FA)

Gradient : 10%B increase to 90%B within 1.5 min, 90%B for 1.5 min, back to 5%B within 0.5 min

Flow Rate : 2mL/min

Column : Sunfire C18, 4.6*50mm, 3.5um

Oven Temperature : 50 C

Product Name: SB-705498

InvivoChem Cat #: V1685

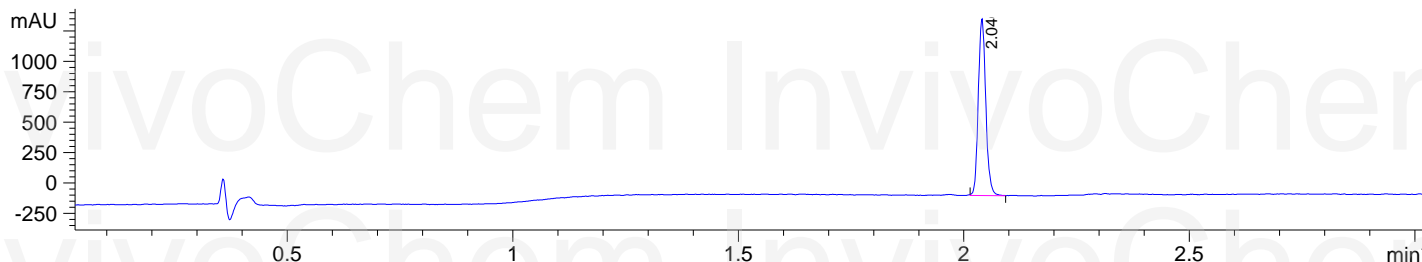
CAS #: 501951-42-4

Batch #: V168501

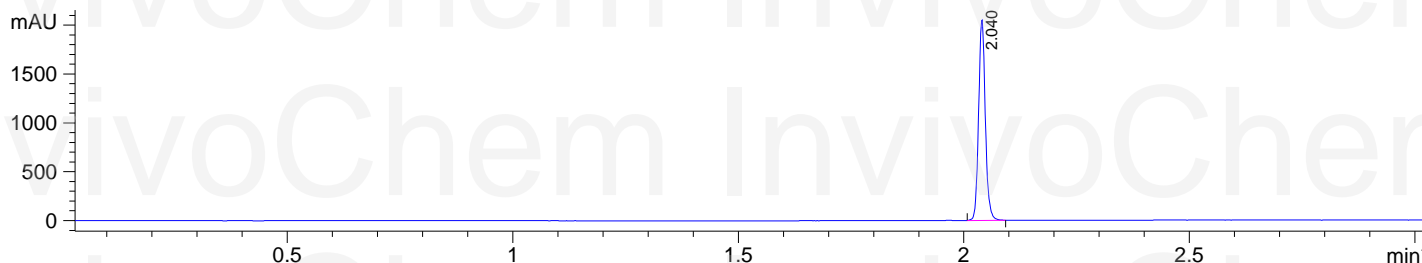
Formula: C17H16BrF3N4O

Molecular Weight: 429.23

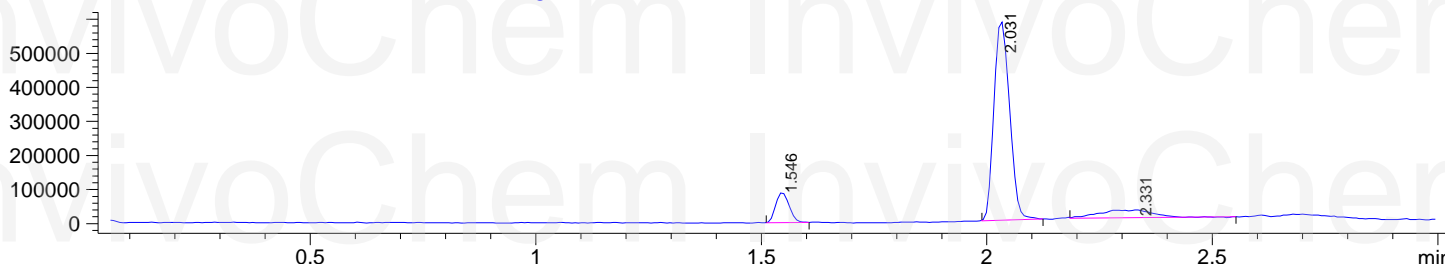
*DAD1 A, Sig=214,4 Ref=off



*DAD1 B, Sig=254,4 Ref=off



MSD1 TIC, MS File ES-API, Pos, Scan, Frag: 70



Integration Results for DAD1 A, Sig=214,4 Ref=off

RetTim	Width	Area	Height	Area%
2.04	0.02	1685.24	1460.47	100.00

Integration Results for DAD1 B, Sig=254,4 Ref=off

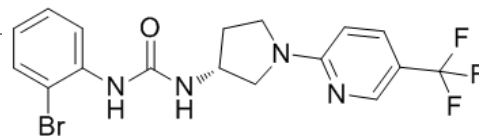
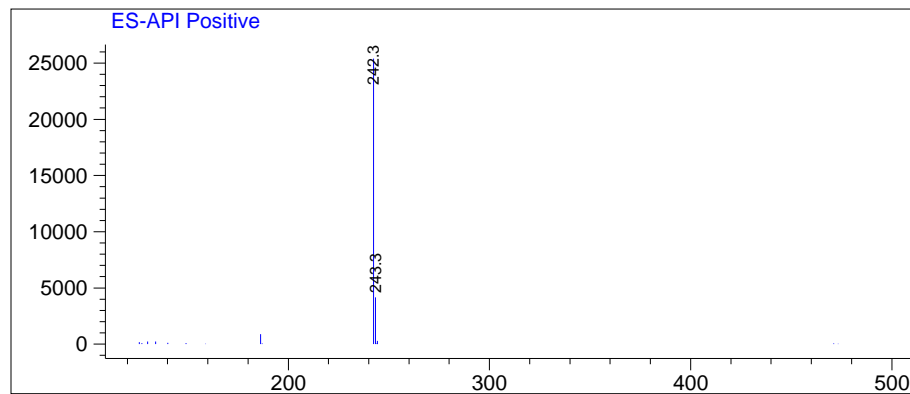
RetTim	Width	Area	Height	Area%
2.04	0.02	2140.85	2065.95	100.00

MASS Analysis for SB-705498



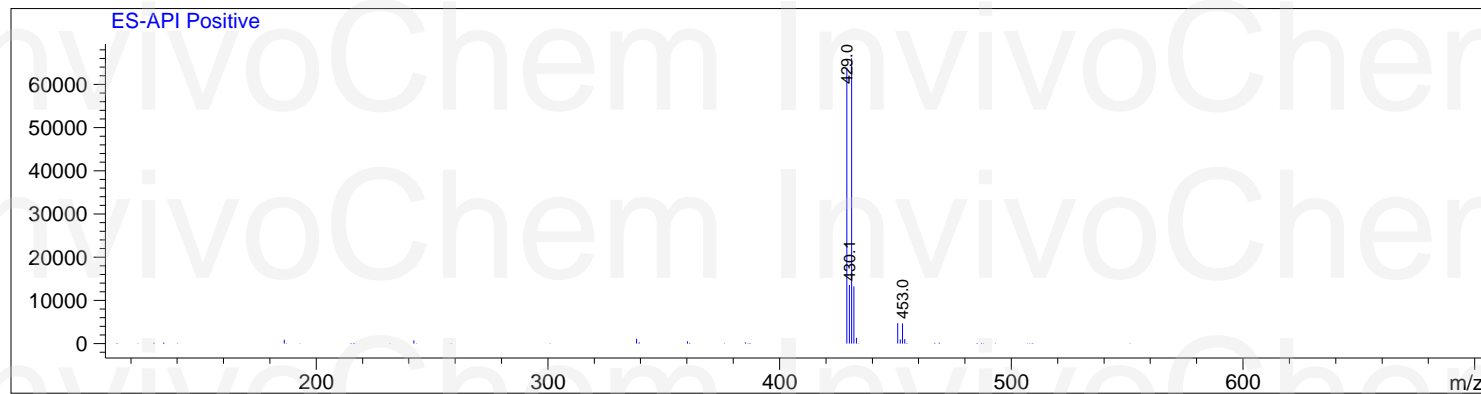
LC/MS Report

Ret. Time: 1.55 <<<< POSITIVE SPECTRA >>>>



Product Name: SB-705498
InvivoChem Cat #: V1685
CAS #: 501951-42-4
Batch #: V168501
Formula: C17H16BrF3N4O
Molecular Weight: 429.23
Exact Mass: 428.046

Ret. Time: 2.03



Ret. Time: 2.33

