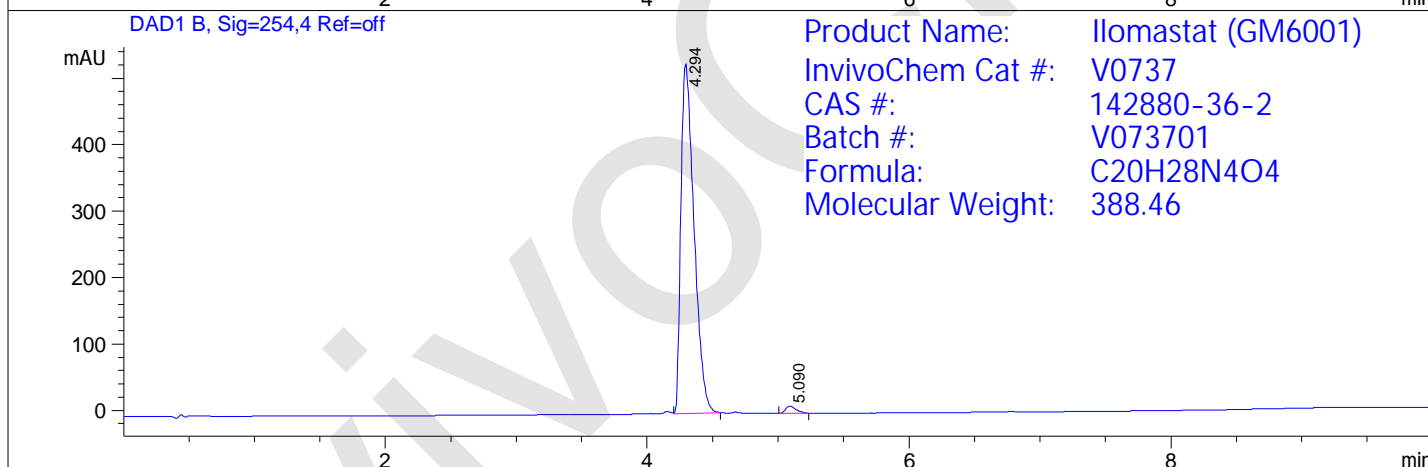
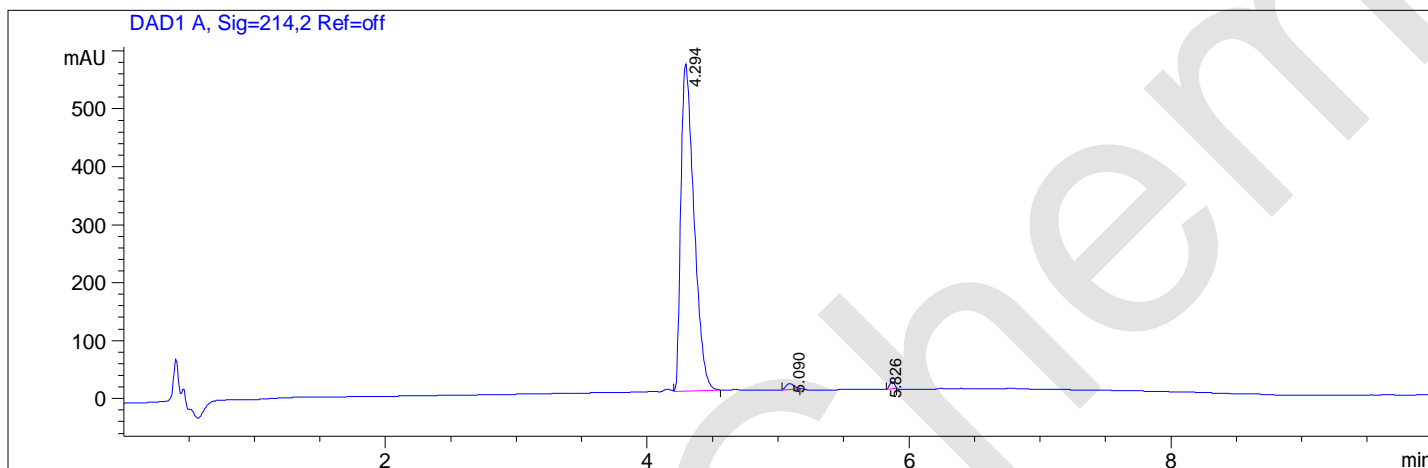


HPLC Analysis for Ilomastat (GM6001)



Injection Date : 10-Jun-15, 16:36:51 Seq. Line : 0
Sample Name : 610CC Location : P2-D-06
Acq. Operator : 8 Inj : 0
Spec. Reported : Integration Inj Volume : 5 ul



Integration Results for DAD1 A, Sig=214,2 Ref=off

RetTim	Width	Area	Height	Area%
4.29	0.11	3931.30	563.70	98.08
5.09	0.07	44.73	10.05	1.12
5.83	0.04	32.29	0.15	0.81

Integration Results for DAD1 B, Sig=254,4 Ref=off

RetTim	Width	Area	Height	Area%
4.29	0.11	3664.38	525.29	98.40
5.09	0.08	59.67	10.92	1.60