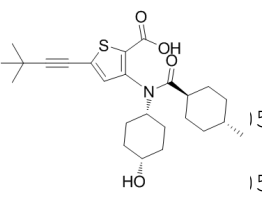
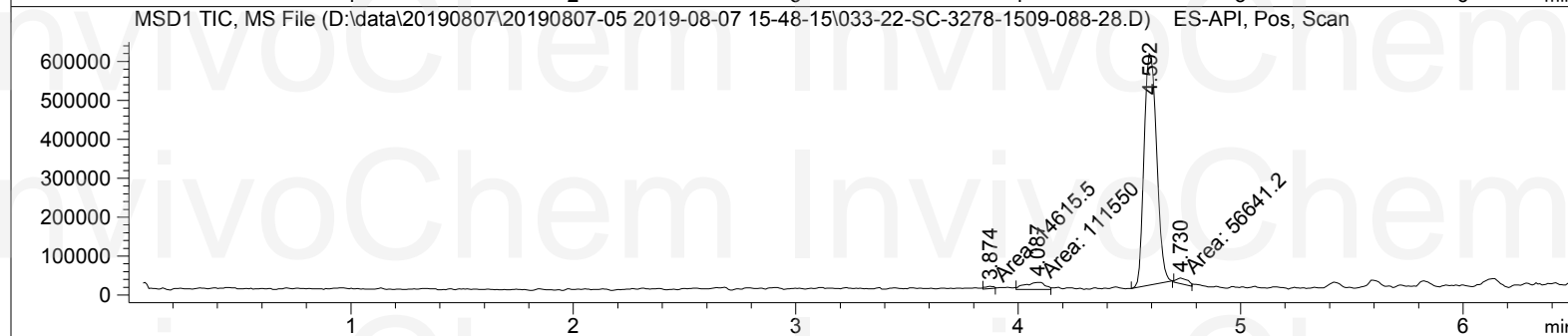
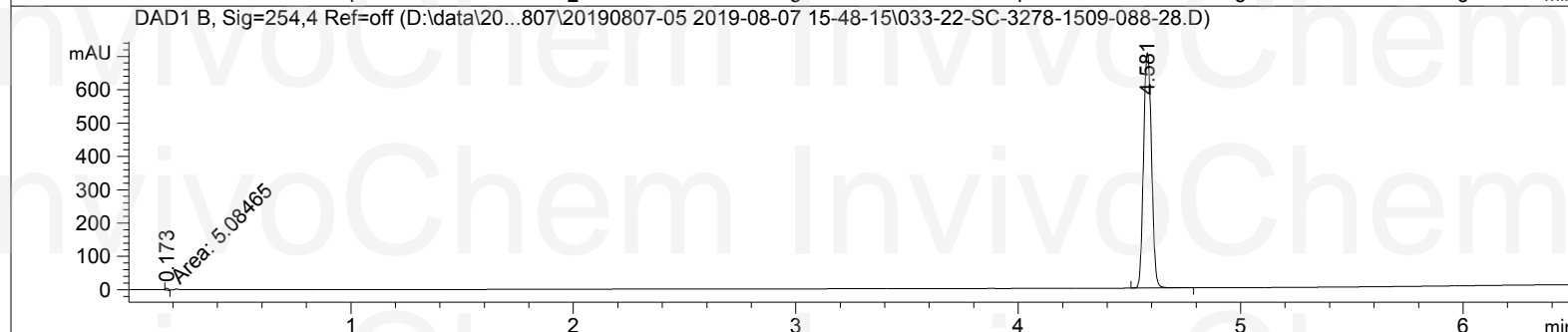
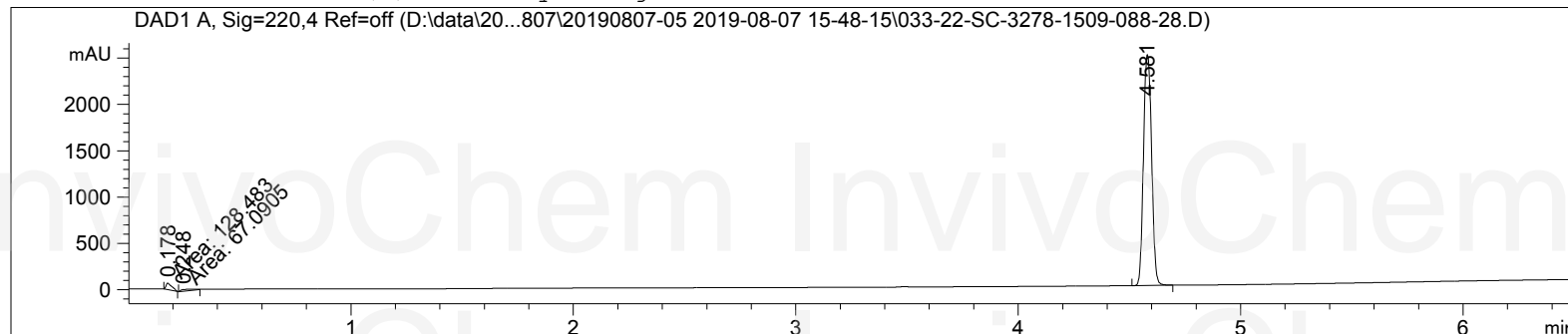




Acq. Operator : admin
Acq. Instrument : LCMS-03-141
Injection Date : 8/8/2019 05
Acq. Method : D:\data\201
Last changed : 8/7/2019 17
Analysis Method : D:\data\201
Sequence Me
Last changed : 8/8/2019 08:47:31 by admin
Additional Info : Peak(s) manually integrated



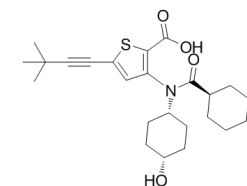
Product Name: Lomibuvir
InvivoChem Cat #: V0726
CAS #: 1026785-59-0 or 1026785-55-6
Batch #: V072601
Formula: C₂₅H₃₅NO₄S
Molecular Weight: 445.62
Exact Mass: 445.2287



MS Signal: MSD1 TIC, MS File, ES-API, Pos, Scan, Frag: 70
 Spectra averaged over upper half of peaks.
 Noise Cutoff: 1000 counts.
 Reportable Ion Abundance: > 10%.

Retention Time (MS)	MS Area	Mol. Weight or Ion
---------------------	---------	--------------------

3.874



Product Name: Lomibuvir
 InvivoChem Cat #: V0726
 CAS #: 1026785-59-0 or 1026785-55-6
 Batch #: V072601
 Formula: C₂₅H₃₅NO₄S
 Molecular Weight: 445.62
 Exact Mass: 445.2287

4.087

3.2
 346.30 I
 328.25 I
 317.25 I
 300.25 I
 299.35 I
 281.25 I
 190.20 I

4.592

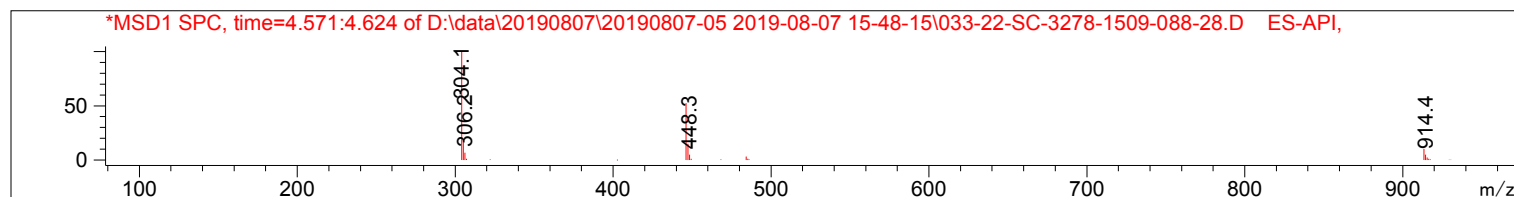
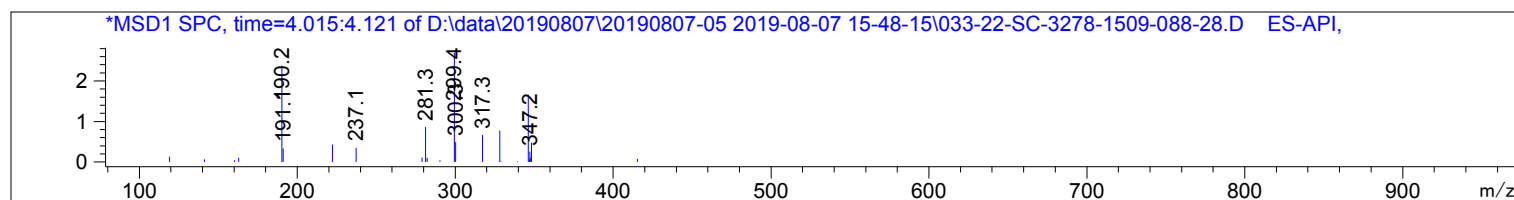
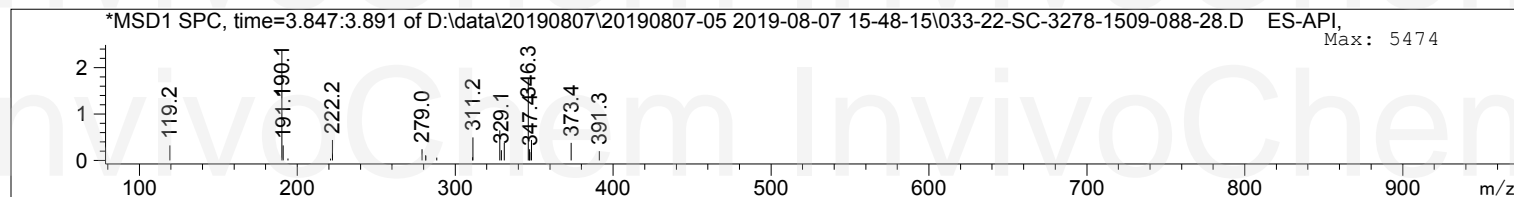
2346426

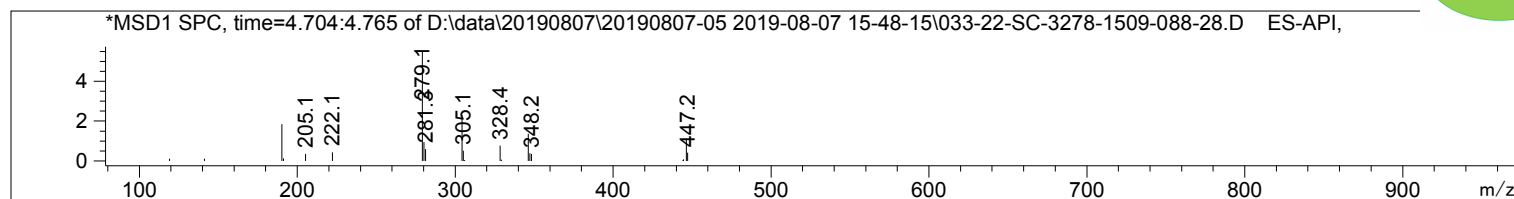
913.45 I
 447.30 I
 446.25 I
 305.20 I
 304.15 I

4.730

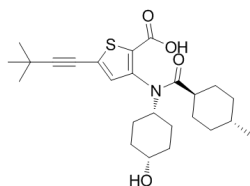
56641

446.30 I
 346.20 I
 328.35 I
 304.20 I
 281.25 I
 280.20 I
 279.15 I
 190.15 I





*** End of Report ***



Product Name: Lomibuvir
InvivoChem Cat #: V0726
CAS #: 1026785-59-0 or 1026785-55-6
Batch #: V072601
Formula: C₂₅H₃₅NO₄S
Molecular Weight: 445.62
Exact Mass: 445.2287

InvivoChem InvivoChem
InvivoChem InvivoChem
InvivoChem InvivoChem
InvivoChem InvivoChem
InvivoChem InvivoChem
InvivoChem InvivoChem
InvivoChem InvivoChem