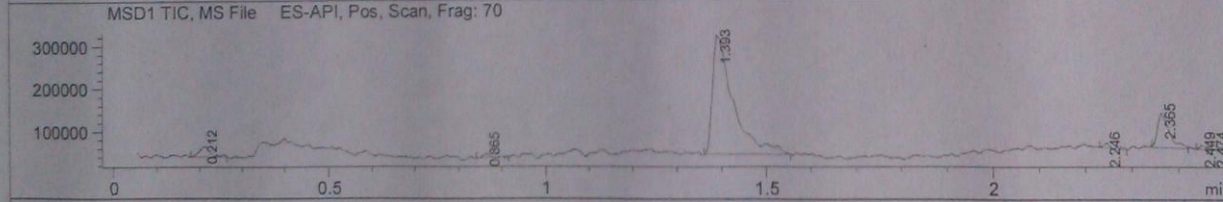
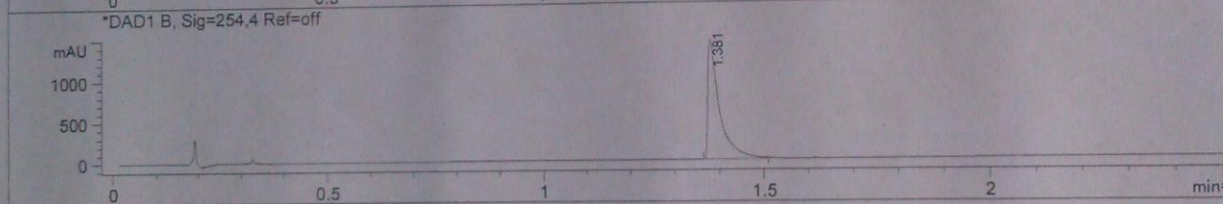
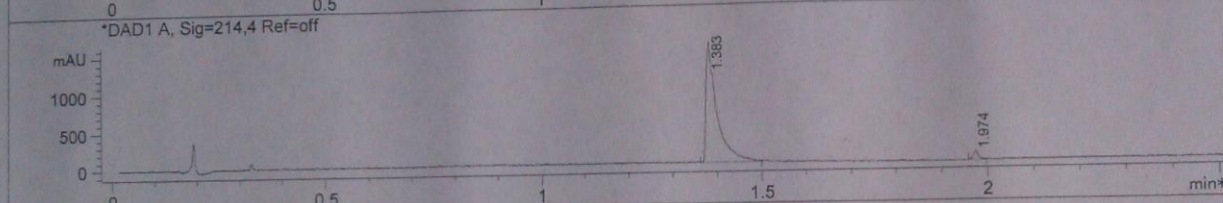
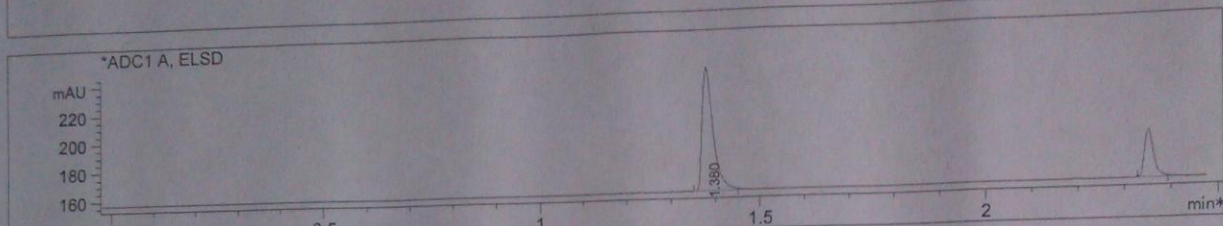


File D:\DATA\tini
 Acq. Method : D:\METHODS\1-POS-3MIN.M
 Analysis Method : D:\METHODS\1-POS-3MIN.M
 Sample Info : *** No target masses specified ***
 Method Info : Mobile Phase: A: water(0.01%TFA) B: ACN(0.01%TFA)
 Gradient: 5%-95% B in 1.2min
 Flow Rate: 2.2 ml/min
 Column: Poroshell 120 EC-C18,4.6*30mm,2.7um
 Oven Temperature: 50 C
 Mass Range: 110-800



Integration Results for ADC1 A, ELSD

RetTim	Width	Area	Height	Area%
1.38	0.03	145.85	83.76	100.00

Integration Results for DAD1 A, Sig=214,4 Ref=off

RetTim	Width	Area	Height	Area%
1.38	0.02	2681.12	1522.59	97.07
1.97	0.01	80.85	111.12	2.93

Integration Results for DAD1 B, Sig=254,4 Ref=off

RetTim	Width	Area	Height	Area%
1.38	0.02	2557.91	1430.27	100.00

LC/MS Report

