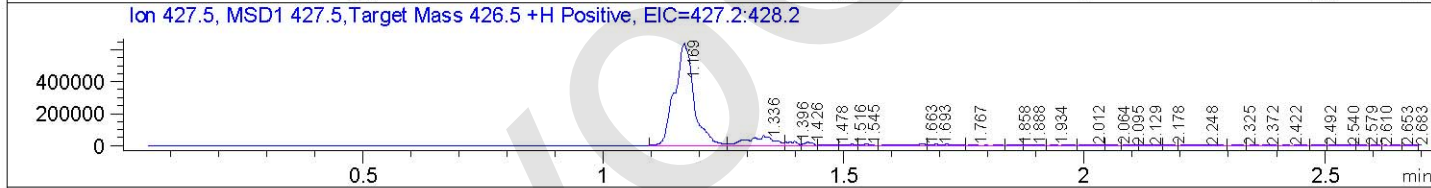
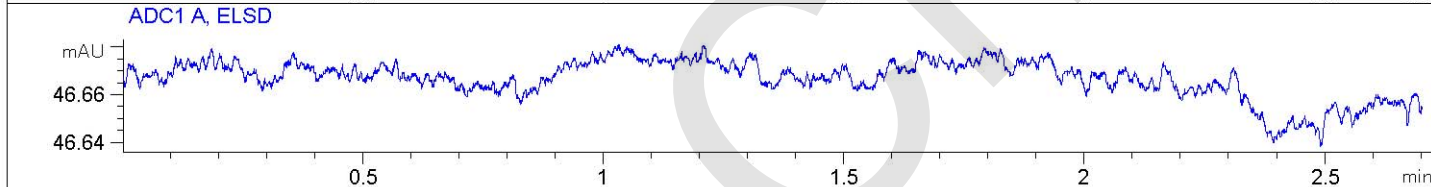
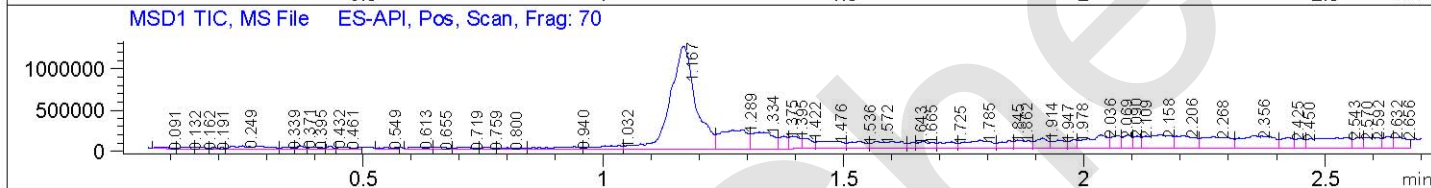
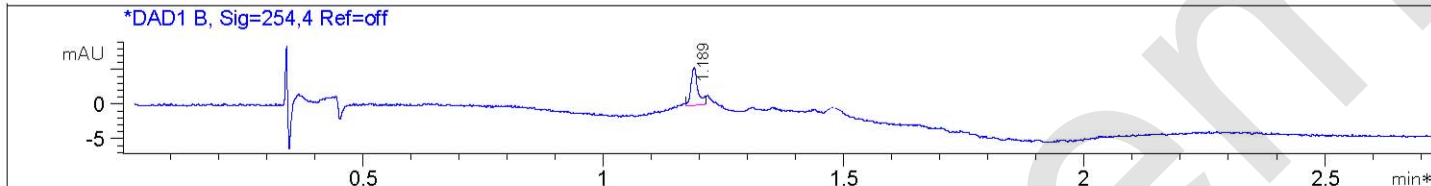




File D:\DATA\A02\MONITOR\103476-92125-LCMSA031.D

Injection Date : 10-Aug-18, 11:28:49      Tgt Mass(EZX) : 426.50  
 Sample Name : 103476      Location : P1-E-02  
 Acq. Operator : LCMSA031      Inj : 0  
 Spec. Reported : MS Integration      Inj Volume : 2 ul  
 Acq. Method : D:\METHODS\1-POS-3MIN.M  
 Analysis Method : D:\METHODS\1-POS-3MIN.M  
 Sample Info : Easy-Access Method: '1-POS-3min' 426.50  
 Method Info : Mobile Phase: A: water(0.01%TFA) B: ACN(0.01%TFA)  
 Gradient: 5%-95% B in 1.2min  
 Flow Rate: 2ml/min  
 Column: SunFire C18,4.6\*50mm,3.5um  
 Oven Temperature: 50 C  
 Mass Range: 133-1000



Integration Results for DAD1 B, Sig=254,4 Ref=off

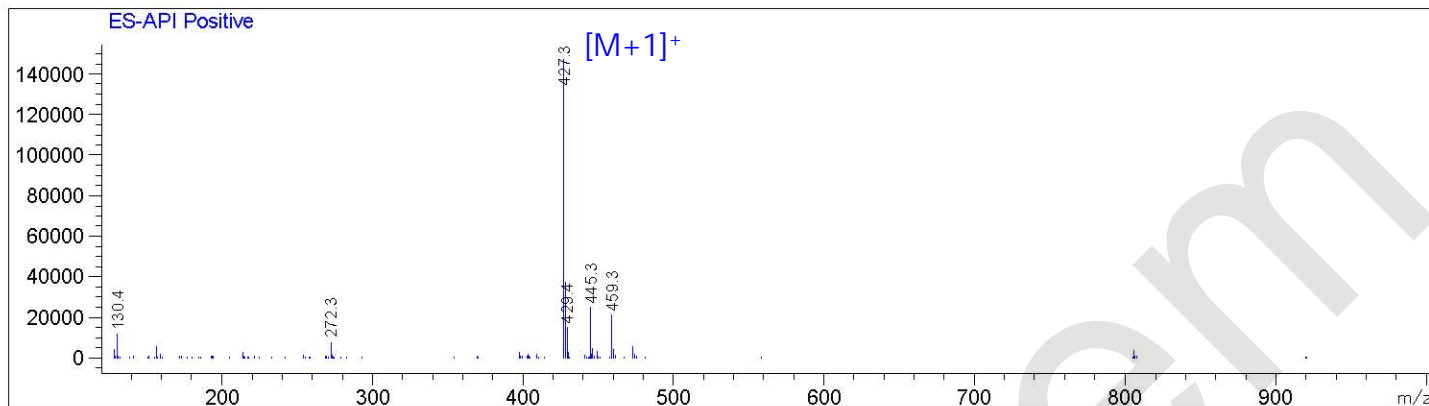
RetTim	Width	Area	Height	Area%
1.19	0.01	5.37	5.53	100.00

Integration Results for ADC1 A, ELSD



Product Name: Leupeptin Hemisulfate  
InvivoChem Cat #: V0703  
CAS #: 103476-89-7  
Batch #: V070301  
Formula: C<sub>20</sub>H<sub>38</sub>N<sub>6</sub>O<sub>4</sub>·1/2H<sub>2</sub>SO<sub>4</sub>  
Molecular Weight: 475.59  
Exact Mass: 426.3 (Leupeptin free base)

Ret. Time: 1.17



InvivoChem