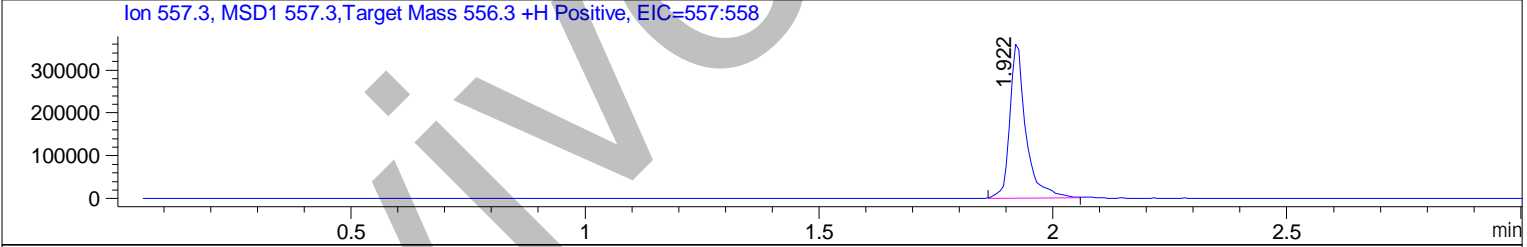
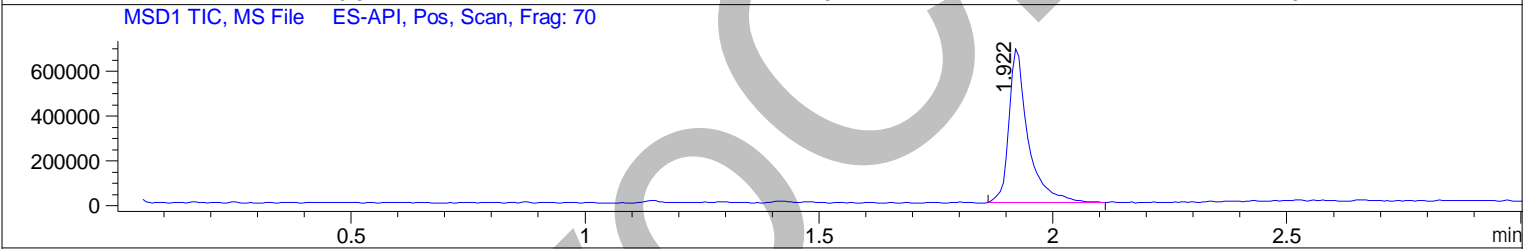
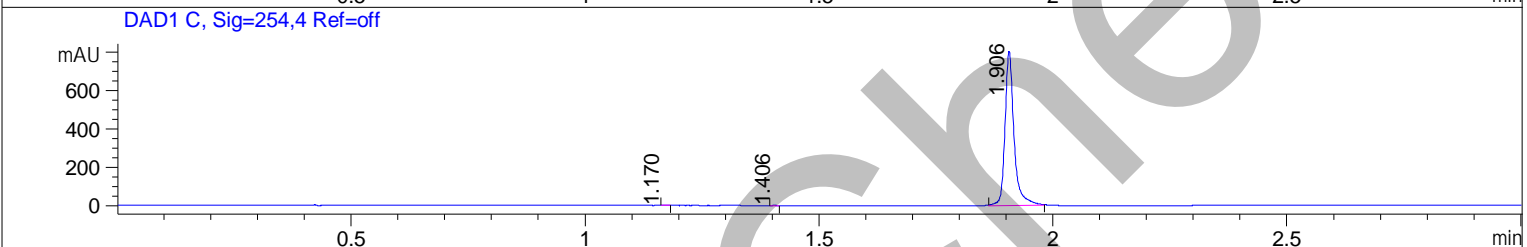
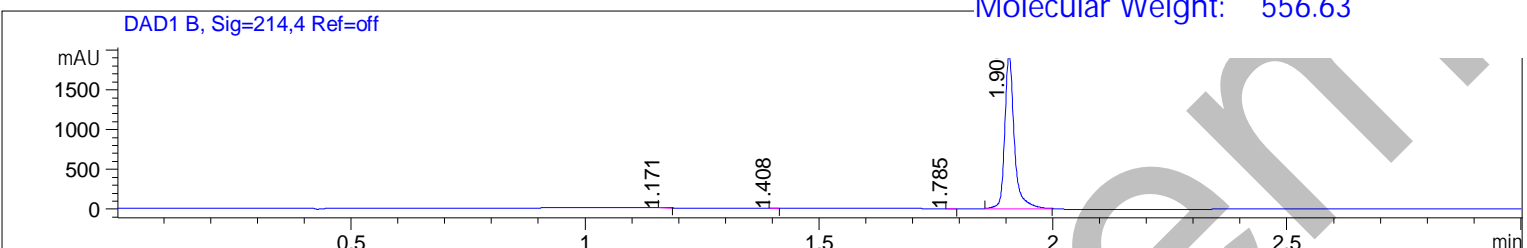


HPLC Analysis for Pexmetinib



File ..1\DATA\2019\20190415\560\BIZ2019-415-CXL2.D Tgt Mass (CHM):
 Injection Date : 15 Apr 19 4:56 pm +0800 Seq. Line : 13
 Sample Name : BIZ2019-415-CXL2 Location : P2-F-02
 Acq. Operator : LQ_1052 Inj : 1
 Spec. Reported : MS Integration Inj Volume : 1 ul
 Acq. Method : D:\Chem32\1\data\2019\20190415\560\1-POS-3MIN-1.M
 Analysis Method : D:\CHEM32\1\DATA\2019\20190415\560\1-POS-3MIN-1.M
 Catalog No : HY-16782 Batch#40147
 Method Info : Mobile Phase: A: water(0.01%TFA) B:ACN(0.01%TFA)
 Gradient: 5% to 95%B within 1.3 min
 Flow Rate :1.8ml/min
 Column :SunFire C18, 4.6*50mm,3.5um A-RP-314
 Oven Temperature : 45

Product Name: Pexmetinib
 InvivoChem Cat #: V0484
 CAS #: 945614-12-0
 Batch #: V048401
 Formula: C31H33FN6O3
 Molecular Weight: 556.63



Integration Results for DAD1 B, Sig=214,4 Ref=off

RetTim	Width	Area	Height	Area%	MS (+)
1.17	0.02	1.65	1.43	0.06	160
1.41	0.01	0.52	0.62	0.02	160
1.78	0.01	0.64	0.76	0.02	160
1.91	0.02	2780.64	1937.23	99.90	557

Integration Results for DAD1 C, Sig=254,4 Ref=off

RetTim	Width	Area	Height	Area%	MS (+)
1.17	0.01	0.15	0.19	0.01	160
1.41	0.01	0.31	0.44	0.03	160
1.91	0.02	1086.97	805.39	99.96	557

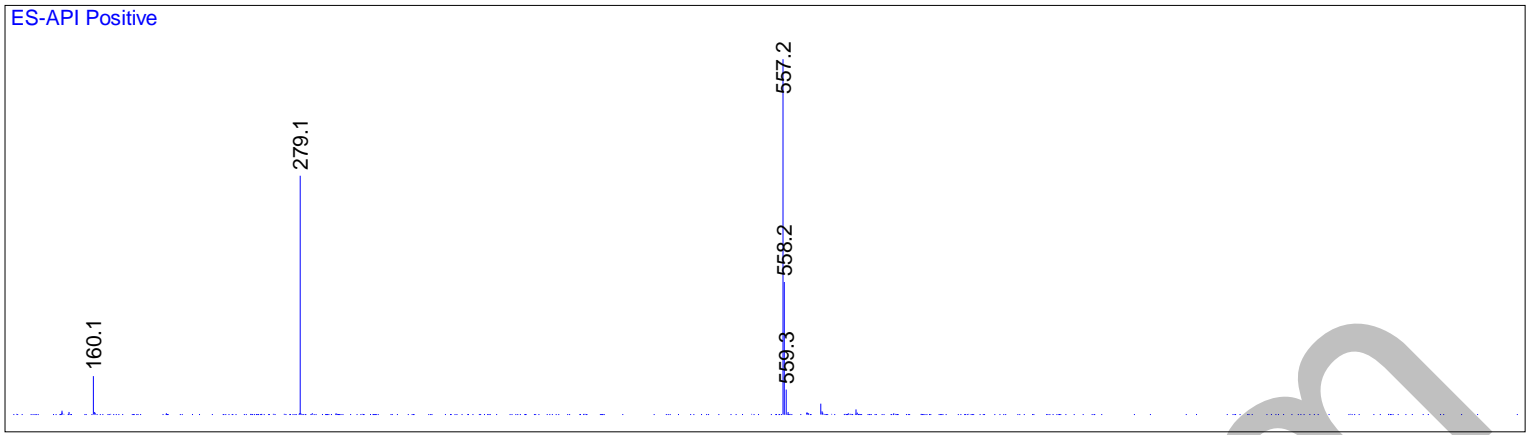
Integration Results for MSD1 TIC, MS File

RetTim	Width	Area	Height	Area%	MS (+)
1.92	0.04	1961949.75	691542.31	100.00	557

Ret. Time: 1.92

<<<< POSITIVE SPECTRA >>>>

ES-API Positive



InVivoChem