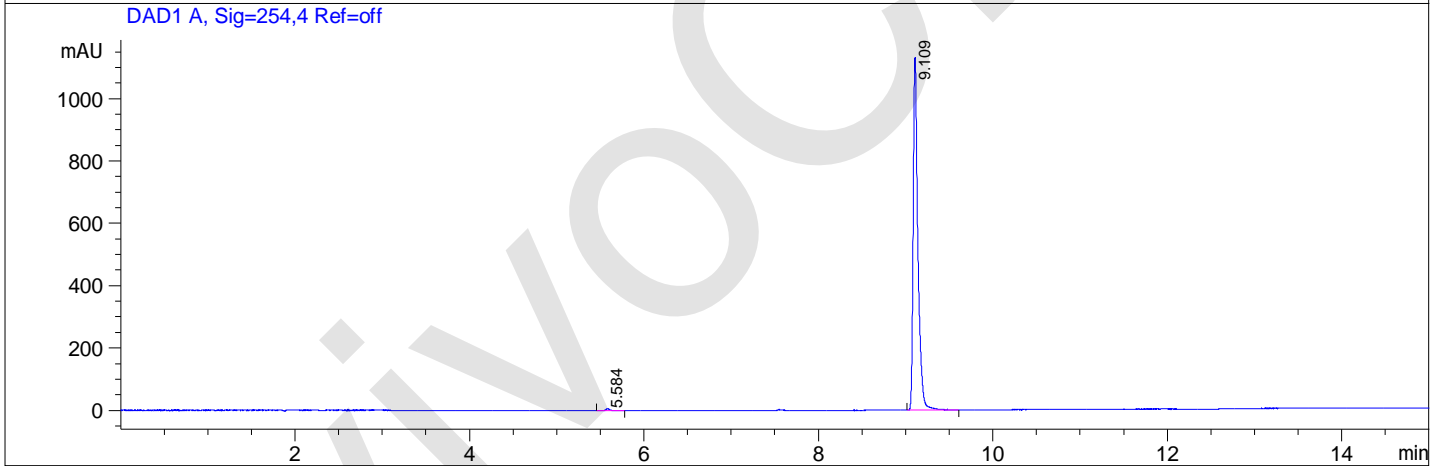
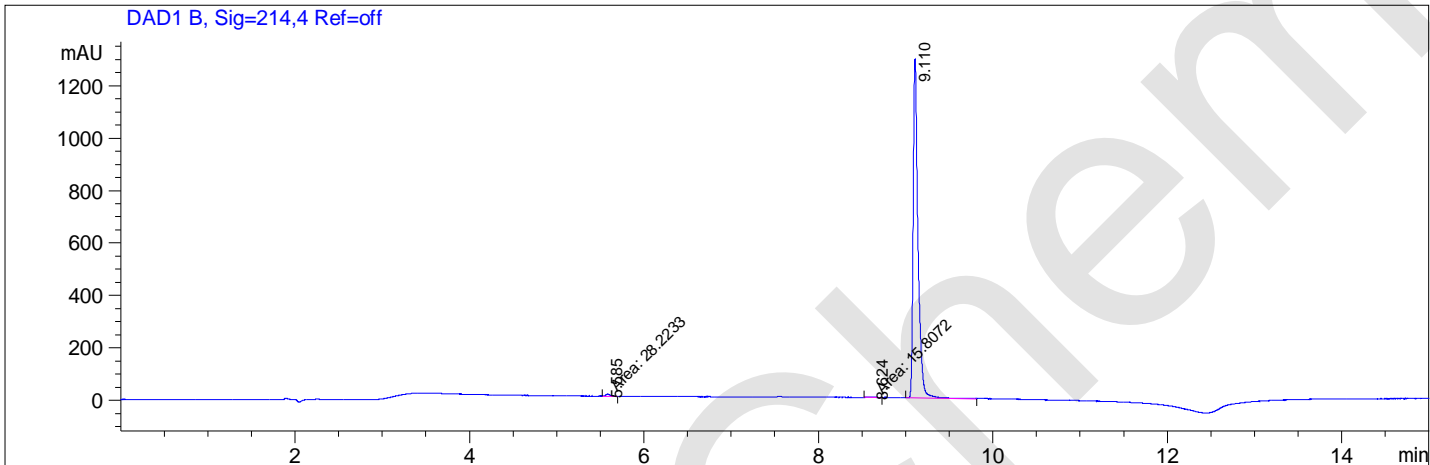




File ..BATCCD\MONITOR\JK013-095-1-29163-LCMSA042.D Tgt Mass (EZX):
 Injection Date : 8 Dec 14 10:10 pm +0800 Seq. Line : 0
 Sample Name : JK013-095-1 Location : P1-C-07
 Acq. Operator : BATCCD Inj : 1
 Spec. Reported : MS Integration Inj Volume : 0.2 ul
 Acq. Method : C:\CHEM32\1\METHODS\HPLC-A.M
 Analysis Method : C:\CHEM32\1\METHODS\HPLC-A.M
 Sample Info : Easy-Access Method: 'HPLC-A.M'
 Method Info : Column: L-column2 ODS: 150 mm*4.6 mm*5.0 um;
 Mobile Phase: A: Water (0.05% TFA) B: ACN (0.05%TFA) ;
 Gradient: Pump1:B from 5% to 100% for 10 min and hold 100% for 5.0 min;
 Flow Rate: 1.0 mL/min;
 Column Temperature: 40 °C



Integration Results for DAD1 B, Sig=214,4 Ref=off

RetTim	Width	Area	Height	Area%
5.58	0.06	28.22	8.48	0.56
8.62	0.09	15.81	2.81	0.31
9.11	0.06	4995.57	1250.81	99.13

Integration Results for DAD1 A, Sig=254,4 Ref=off

RetTim	Width	Area	Height	Area%
5.58	0.05	25.57	6.79	0.59
9.11	0.06	4273.30	1124.02	99.41