

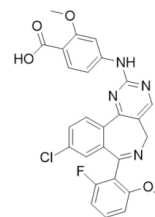
HPLC Analysis for Alisertib (MLN8237)



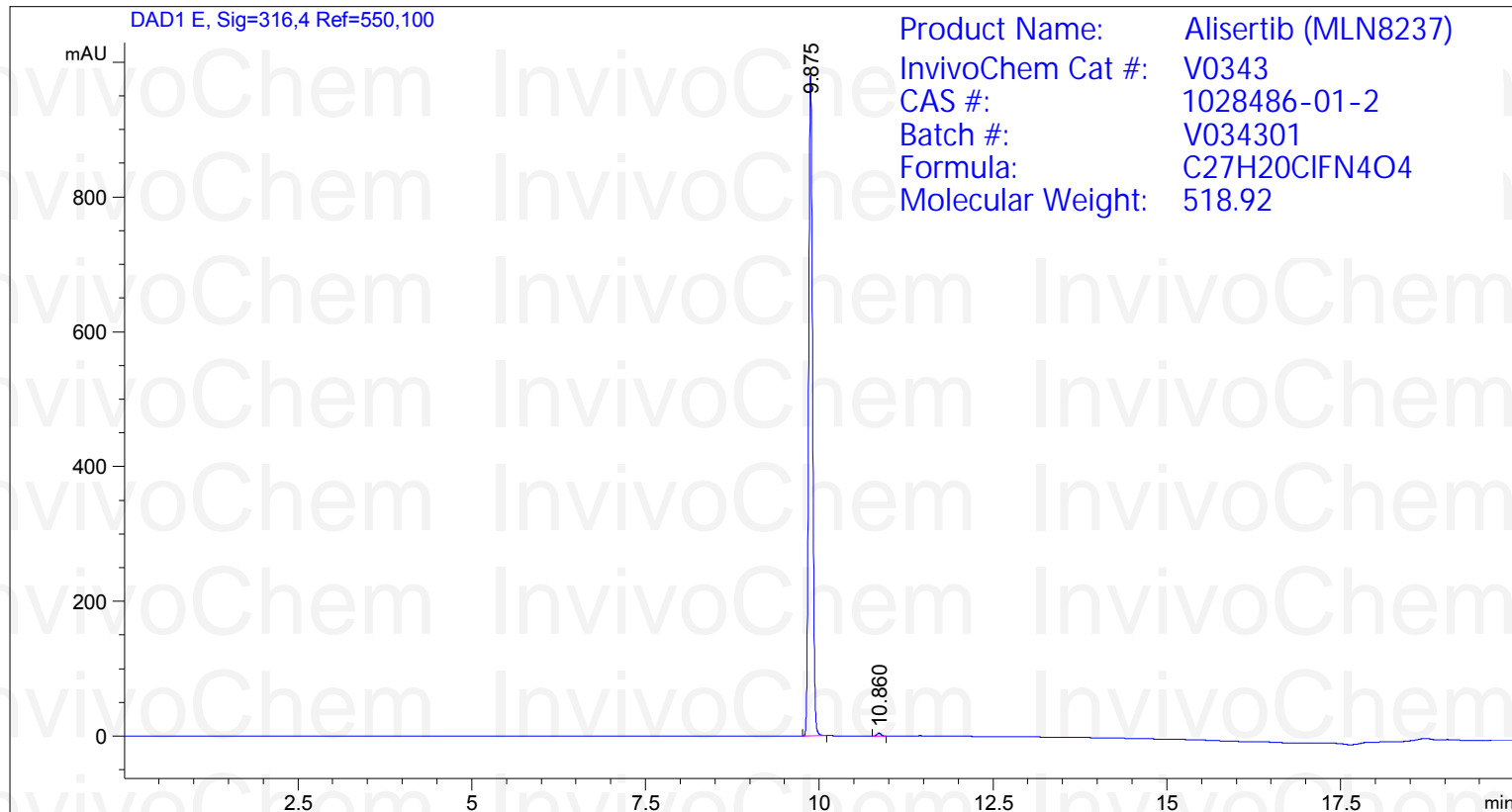
=====
Acq. Operator : SYSTEM
Acq. Instrument : 12601c

Seq. Line : 1
Location : Vial 44

Inj Volume : 2.000 µl
Different Inj Volume from Sample Entry! Actual Inj Volume : 1.000 µl



Additional Info : Peak(s) manually integrated



=====
Area Percent Report
=====

Sorted By : Signal
Multiplier : 1.0000
Dilution : 1.0000
Use Multiplier & Dilution Factor with ISTDs

Signal 1: DAD1 E, Sig=316,4 Ref=550,100

| Peak # | RetTime [min] | Type | Width [min] | Area [mAU*s] | Height [mAU] | Area % |
|--------|---------------|------|-------------|--------------|--------------|---------|
| 1 | 9.875 | BB | 0.0616 | 3829.48804 | 979.38788 | 99.5555 |
| 2 | 10.860 | BB | 0.0629 | 17.09924 | 4.30037 | 0.4445 |

Totals : 3846.58728 983.68825