



Certificate of Analysis

| | |
|--------------|----------|
| Product Name | Luteolin |
| Catalog No. | V0799 |
| Batch No. | V079901 |

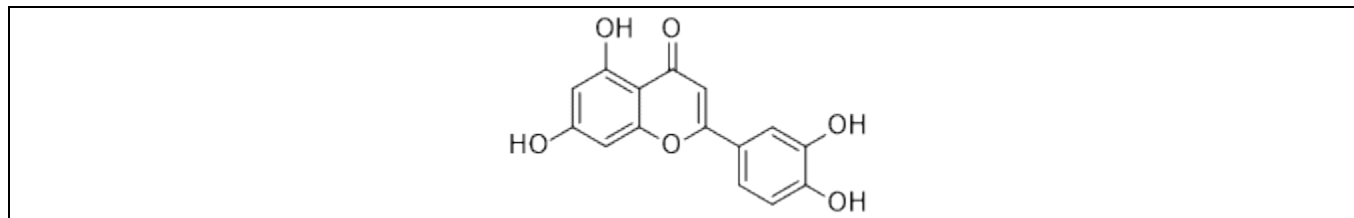
1. Physical and Chemical Properties

| | |
|-------------------|--|
| Appearance | Powder |
| Molecular Formula | C ₁₅ H ₁₀ O ₆ |
| Molecular Weight | 286.24 |
| Purity | ≥98.0% |
| CAS No. | 491-70-3 |

2. Analytical Data

| | |
|---------------|---------------------------|
| HPLC | Indicates ≥98.0% purity |
| NMR | Consistent with structure |
| Mass Spectrum | Consistent with structure |

3. Structure



4. Storage Condition

| | |
|----------------------------|------------------------------|
| Short term storage (weeks) | 0 - 4 °C under dry condition |
| Long term storage (months) | -20 °C under dry condition |

Products are for research use only • Not for human or veterinary use