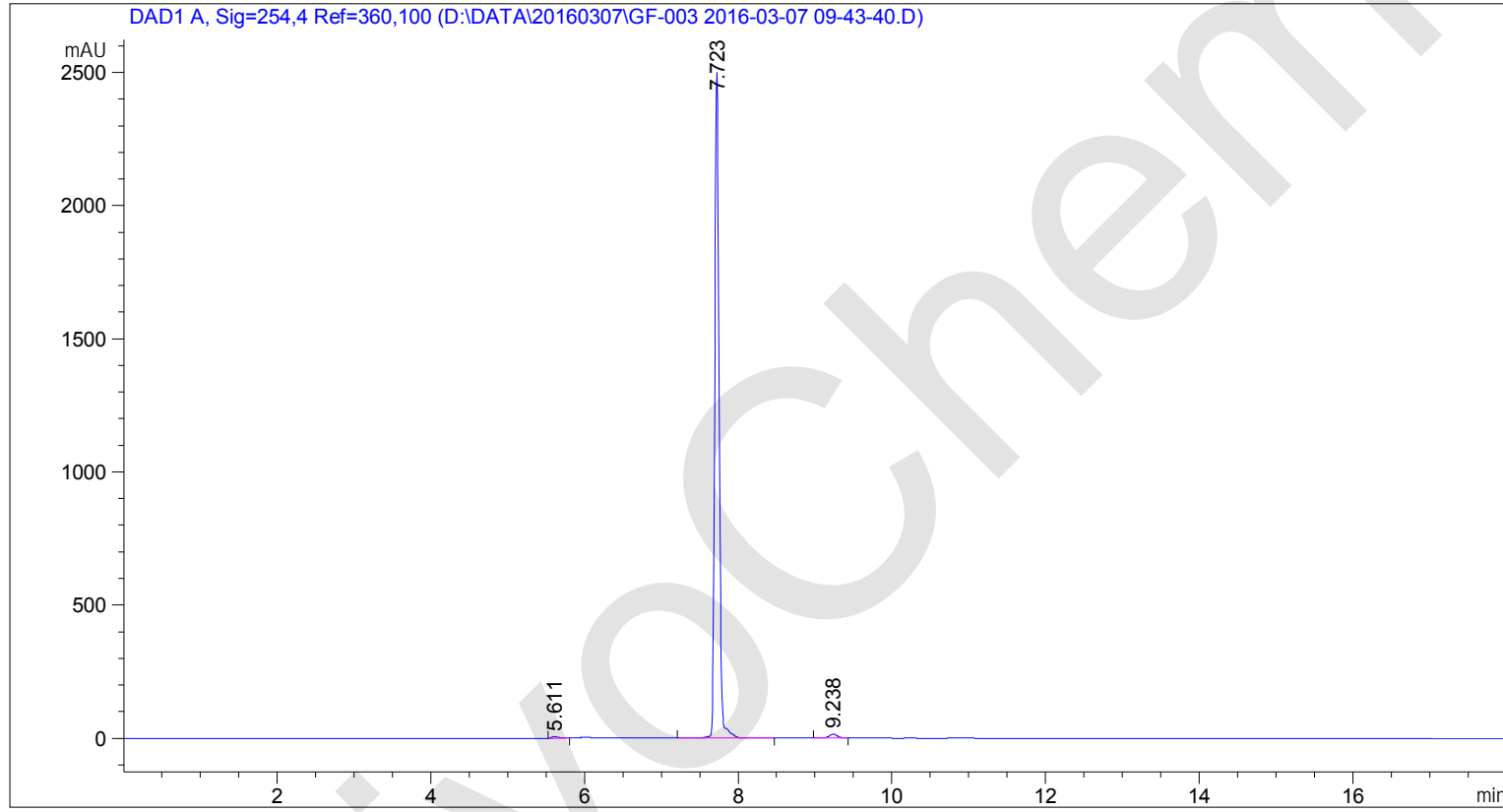


HPLC Analysis for Tideglusib



=====
Acq. Operator : SYSTEM
Sample Operator : SYSTEM
Acq. Instrument : HPLC1260 Location : 1
Injection Date : 07/03/2016 9:44:21 AM
Inj Volume : 1.000 µl
Acq. Method : D:\Methods\def_LC.M
Last changed : 07/03/2016 9:51:23 AM by SYSTEM
(modified after loading)
Analysis Method : D:\Methods\def_LC.M
Last changed : 2/13/2015 11:27:44 PM by SYSTEM
Additional Info : Peak(s) manually integrated



=====
Area Percent Report
=====

Sorted By : Signal
Multiplier : 1.0000
Dilution : 1.0000
Use Multiplier & Dilution Factor with ISTDs

Signal 1: DAD1 A, Sig=254,4 Ref=360,100

Peak #	RetTime [min]	Type	Width [min]	Area [mAU*s]	Height [mAU]	Area %
1	5.611	BB	0.0899	33.57747	5.77166	0.2017
2	7.723	VV R	0.0625	9976.76270	2501.12061	99.0117
3	9.238	BB	0.1188	112.74504	14.81235	0.7866

Totals : 1.01231e4 2521.70462