

—11.09

—10.10

—8.93

7.87

7.85

7.74

7.72

7.65

7.63

7.48

7.46

7.44

7.35

7.33

7.31

7.04

7.02

~4.20

3.81

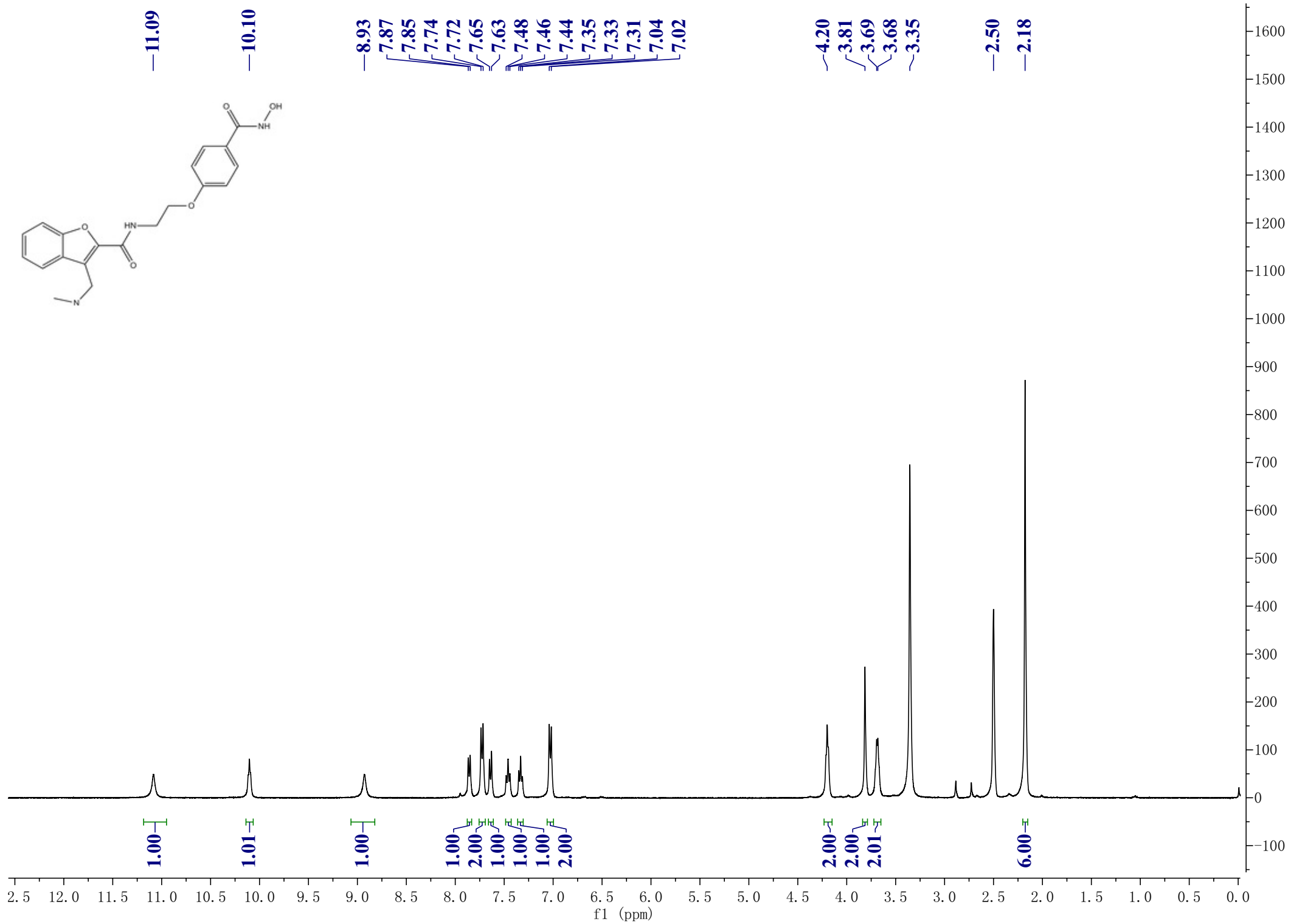
3.69

3.68

~3.35

—2.50

—2.18



1.00

1.01

1.00

1.00

2.00

1.00

1.00

1.00

2.00

2.00

2.00

2.01

6.00

f1 (ppm)