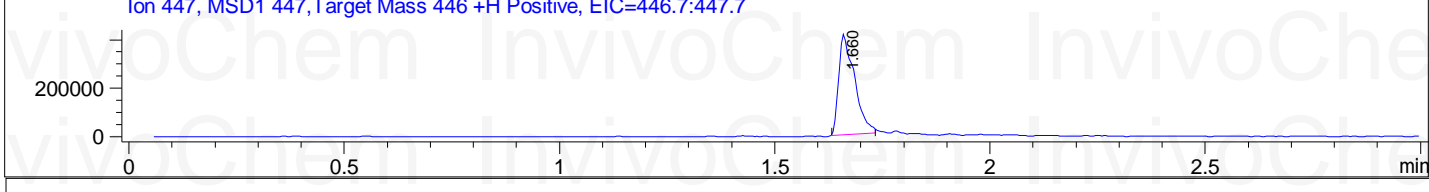
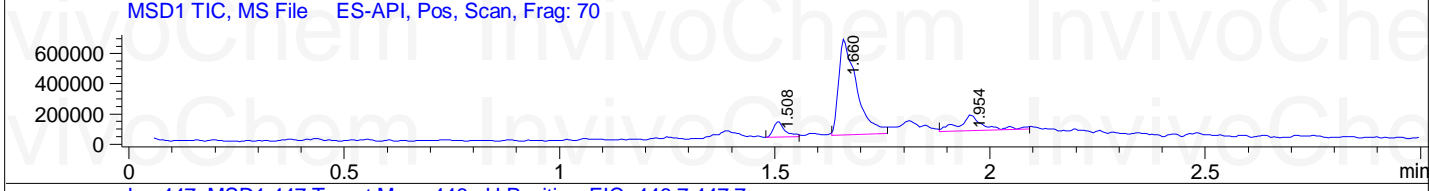
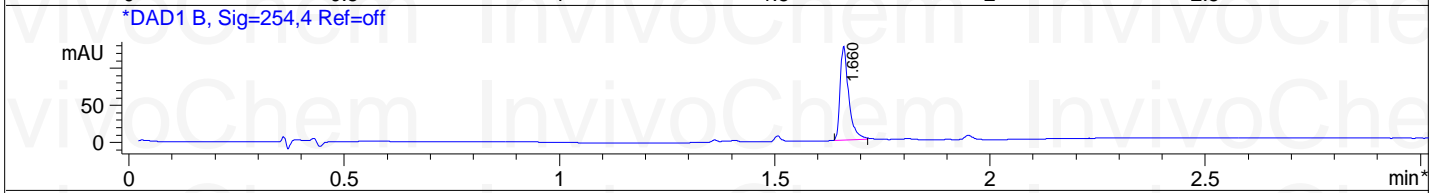
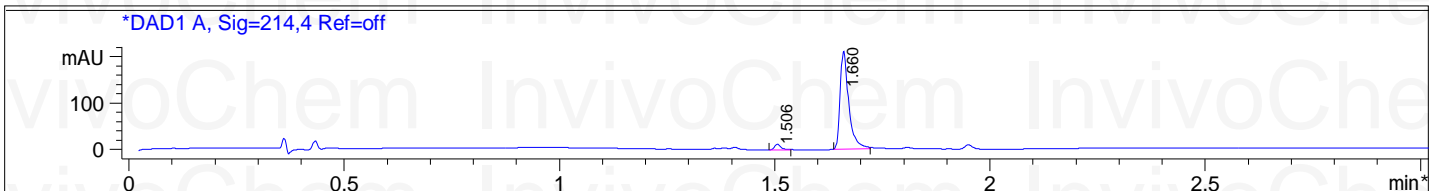




File D:\DATA\A02\MONITOR\1045792-00580-LCMSA026.D
 Injection Date : 19 Sep 18 2:39 pm +0800 Tgt Mass(EZX) : 446.00
 Sample Name : 1045792 Location : P1-B-02
 Acq. Operator : A02-Monitor Inj : 1
 Spec. Reported : MS Integration Inj Volume : 2 ul
 Acq. Method : C:\CHEM32\1\METHODS\1-POS-3MIN.M
 Analysis Method : C:\CHEM32\1\METHODS\1-POS-3MIN.M
 Sample Info : Easy-Access Method: '1-POS-3MIN' 446.00
 Method Info : Mobile Phase: A:Water(10mM NH4HCO3) B:ACN
 Gradient: 5% increase to 95%B within 1.3min, 95%B for 1.7min
 Flow Rate: 1.8 ml/min
 Column: XBridge C18,4.6*50mm,3.5um
 Column Temperature: 45C
 Detection:UV(214,4nm) and MS(ESI,Pos mode,110 to 1000 amu)



Integration Results for DAD1 A, Sig=214,4 Ref=off

RetTim	Width	Area	Height	Area%
1.51	0.02	12.46	12.15	4.04
1.66	0.02	295.79	210.97	95.96

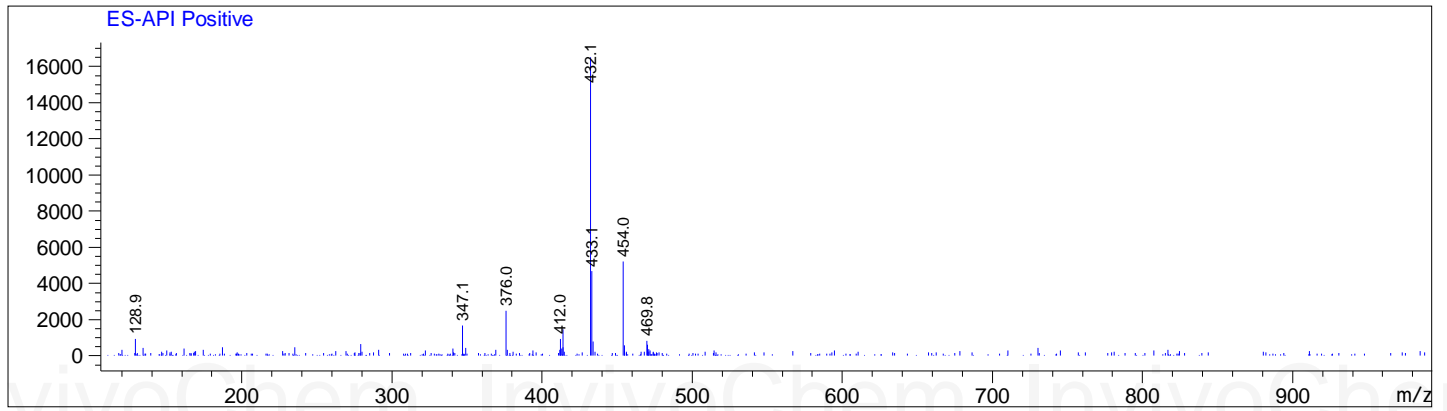
Integration Results for DAD1 B, Sig=254,4 Ref=off

RetTim	Width	Area	Height	Area%
1.66	0.02	176.10	126.37	100.00

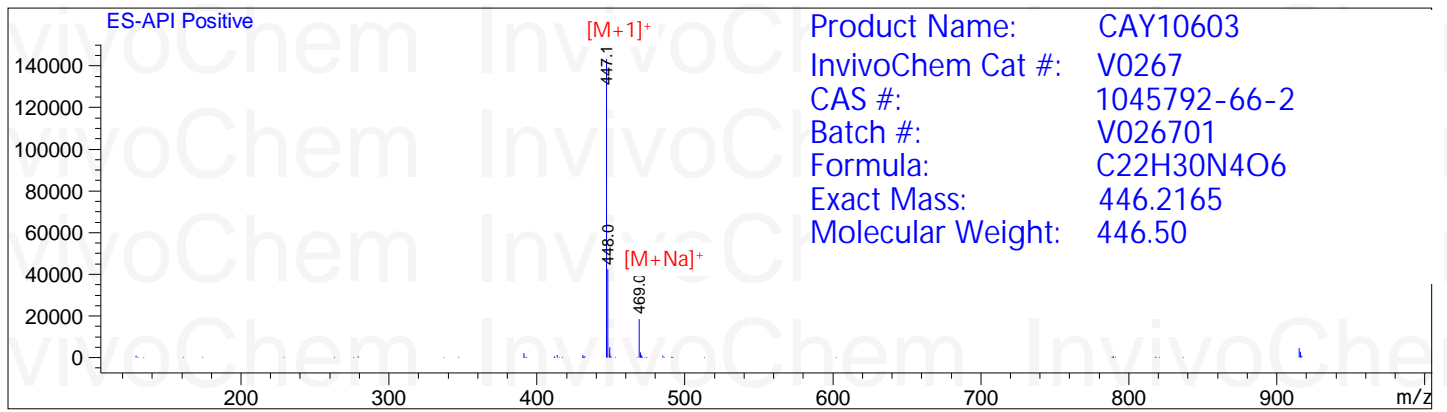


Ret. Time: 1.51

<<<< POSITIVE SPECTRA >>>>



Ret. Time: 1.66



Ret. Time: 1.95

