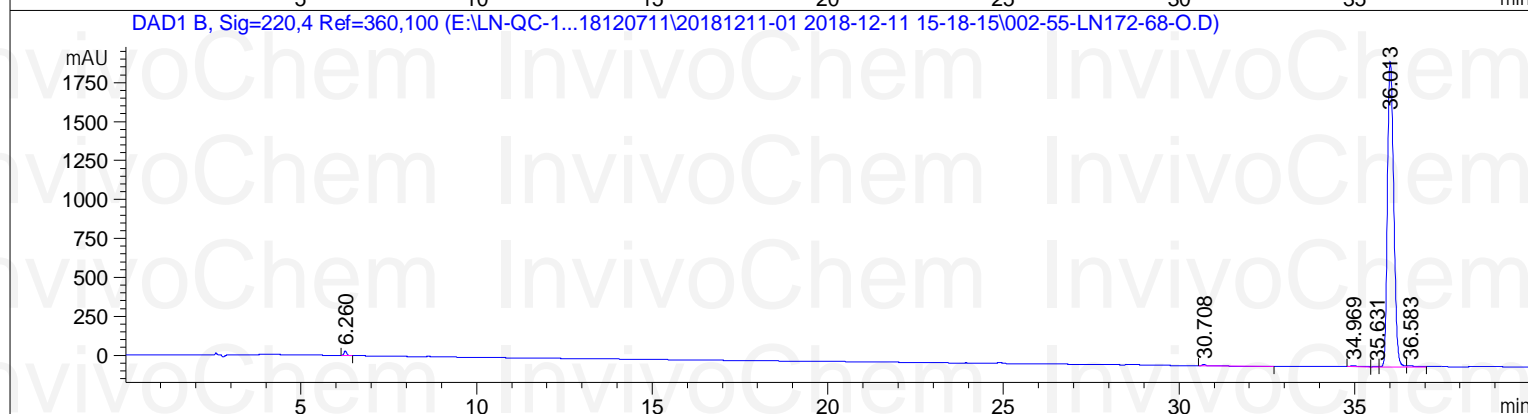
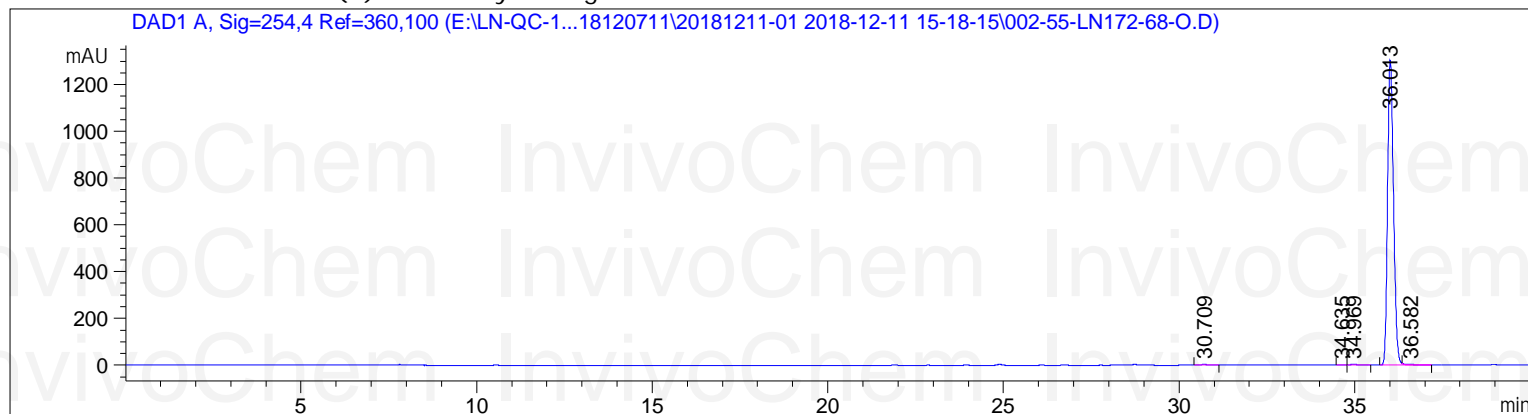




```

=====
Acq. Operator   : SYSTEM                      Seq. Line :    2
Acq. Instrument : HPLC                      Location  :   55
Injection Date  : 12/11/2018 4:07:20 PM      Inj       :    1
                                           Inj Volume: 10.000 µl

Different Inj Volume from Sample Entry! Actual Inj Volume : 2.000 µl
Acq. Method    : E:\LN-QC-125\2018\MMT\DATA\2018120711\20181211-01 2018-12-11 15-18-15\DMT.M
Last changed   : 11/30/2018 12:37:47 PM by SYSTEM
Analysis Method: E:\LN-QC-125\2018\METHOD\DMT.M
Last changed   : 11/30/2018 12:37:47 PM by SYSTEM
Additional Info: Peak(s) manually integrated
    
```



### Area Percent Report

```

Sorted By      :      Signal
Multiplier     :      1.0000
Dilution       :      1.0000
Use Multiplier & Dilution Factor with ISTDs
    
```

Signal 1: DAD1 A, Sig=254, 4 Ref=360, 100

Peak #	RetTime [min]	Type	Width [min]	Area [mAU*s]	Height [mAU]	Area %
1	30.709	BB	0.1205	39.13048	4.93478	0.2520
2	34.635	BV	0.1354	13.48069	1.58246	0.0868
3	34.969	VB	0.1831	44.38160	3.83362	0.2858
4	36.013	BV R	0.1856	1.53782e4	1303.58899	99.0467
5	36.582	VB E	0.2366	51.01960	3.02824	0.3286

Totals : 1.55262e4 1316.96810



Signal 2: DAD1 B, Sig=220, 4 Ref=360, 100

Peak #	RetTime [min]	Type	Width [min]	Area [mAU*s]	Height [mAU]	Area %
1	6.260	BB	0.0861	163.06372	29.66534	0.6593
2	30.708	BV R	0.1284	83.69987	8.21085	0.3384
3	34.969	VB	0.1811	77.46630	6.68804	0.3132
4	35.631	MF R	0.1641	6.18181	6.27940e-1	0.0250
5	36.013	FM R	0.2071	2.43195e4	1957.45190	98.3250
6	36.583	FM R	0.2452	83.88332	5.70238	0.3391

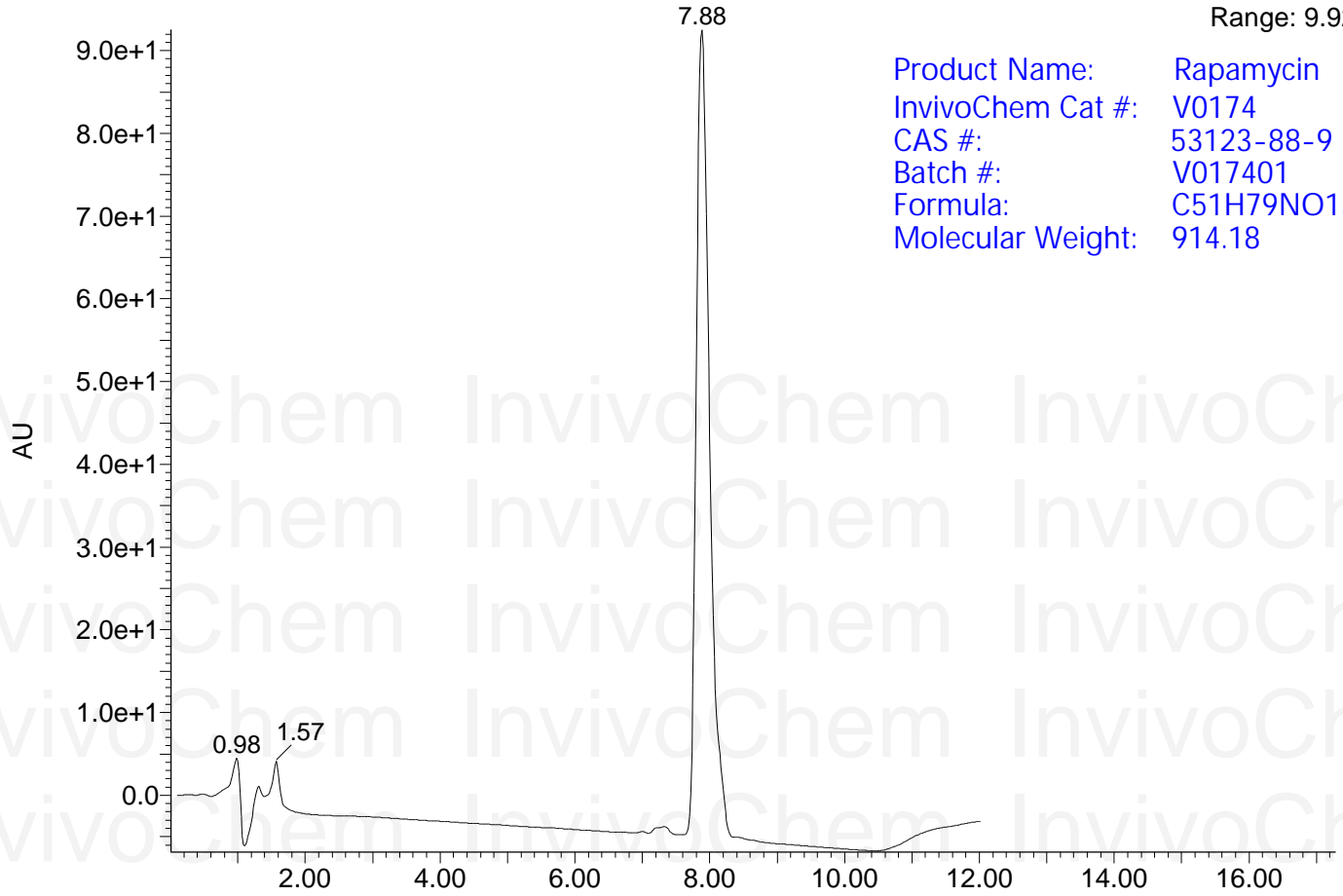
Totals : 2.47338e4 2008.34646

=====  
\*\*\* End of Report \*\*\*

QWK

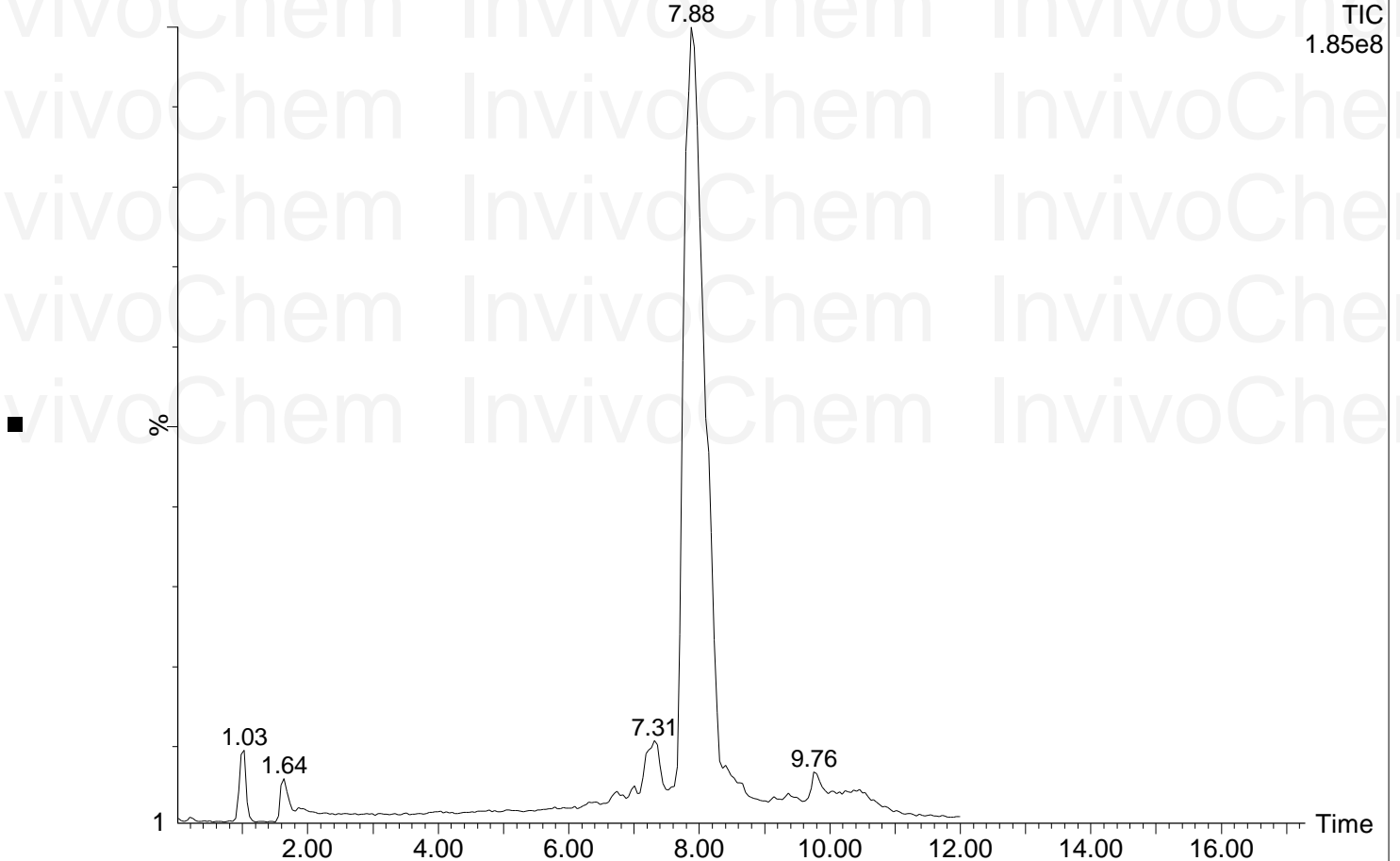
In176-64-----

3: Diode Array  
Range: 9.921e+1



In176-64-----

1: Scan ES+  
TIC  
1.85e8



# MASS Analysis for Rapamycin

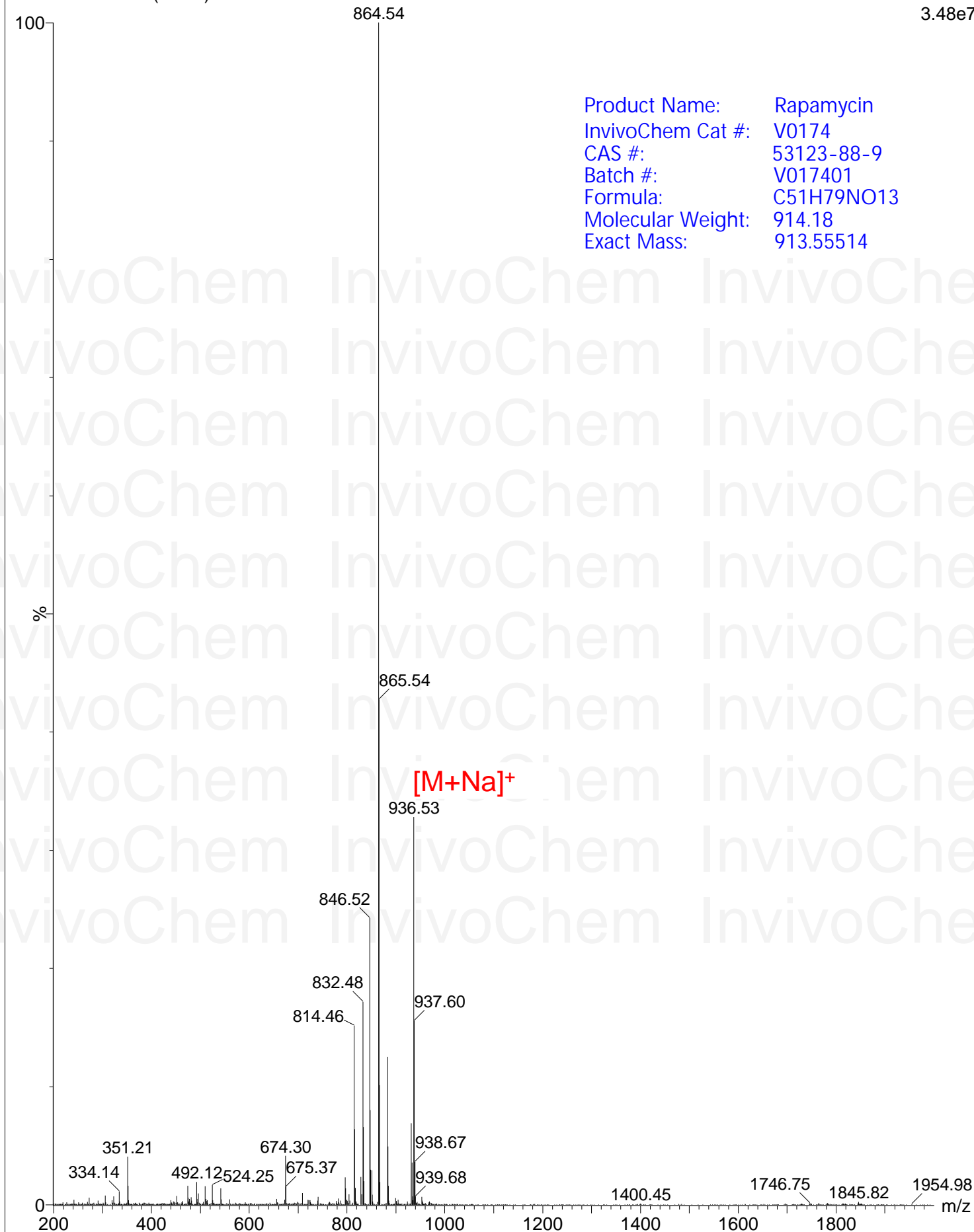


QWK

In176-64----- 184 (8.010)

1: Scan ES+  
3.48e7

Product Name: Rapamycin  
InvivoChem Cat #: V0174  
CAS #: 53123-88-9  
Batch #: V017401  
Formula: C<sub>51</sub>H<sub>79</sub>NO<sub>13</sub>  
Molecular Weight: 914.18  
Exact Mass: 913.55514



[M+Na]<sup>+</sup>