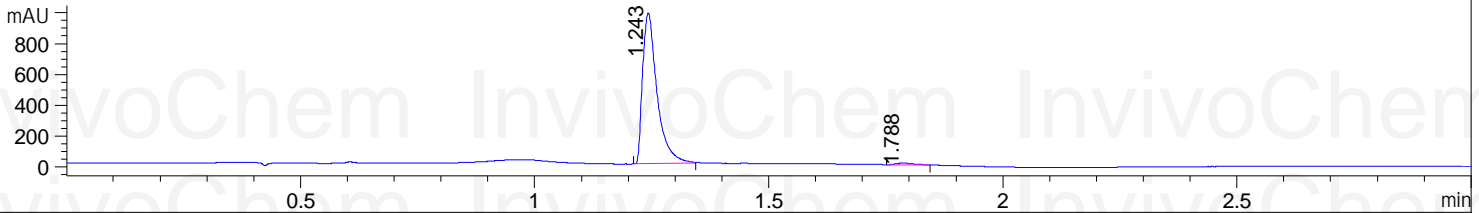


HPLC Analysis for HS-1371

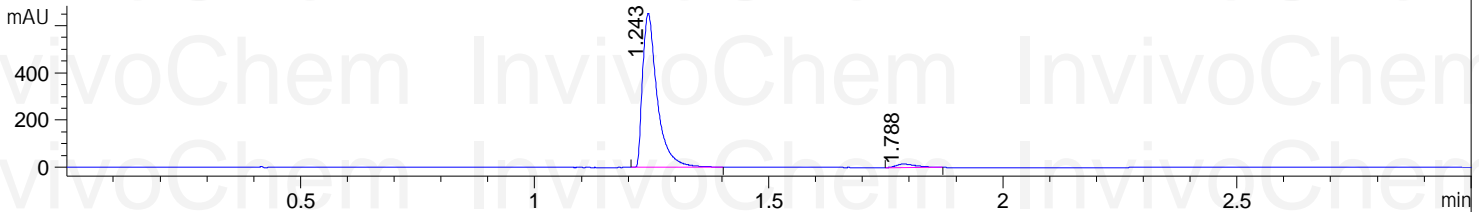
Acq. Operator : LQ_1052 Inj : 1
 Spec. Reported : MS Integration Inj Volume : 1 ul
 Acq. Method : D:\Chem32\1\data\2019\20190121\543\1-POS-3MIN-1.M
 Analysis Method : D:\CHEM32\1\DATA\2019\20190121\543\1-POS-3MIN-1.M
 Catalog No : HY-114349 Batch#36975
 Method Info : Mobile Phase: A: water(0.01%TFA) B:ACN(0.01%TFA)
 Gradient: 5% to 95%B within 1.3 min
 Flow Rate :1.8ml/min
 Column :SunFire C18, 4.6*50mm,3.5um A-RP-314
 Oven Temperature : 45

Product Name: HS-1371
 InvivoChem Cat #: V3954
 CAS #: 2158197-70-5
 Batch #: V395401
 Formula: C24H24N4O
 Molecular Weight: 384.48

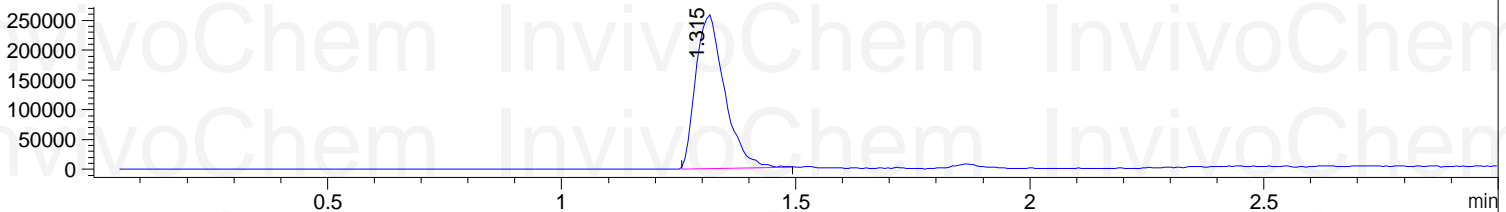
DAD1 B, Sig=214,4 Ref=off



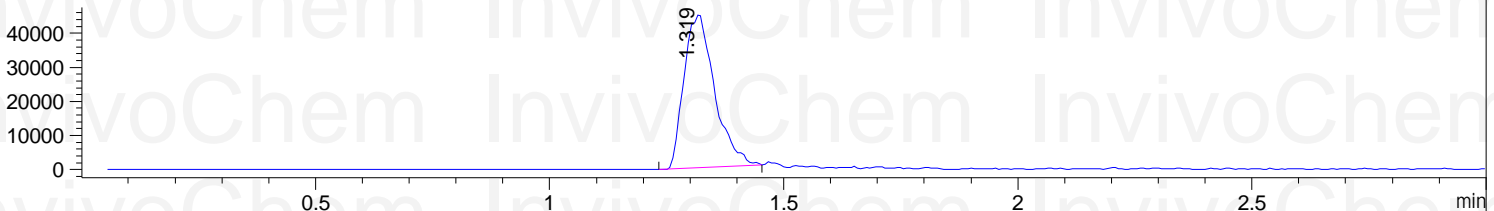
DAD1 C, Sig=254,4 Ref=off



MSD1 TIC, MS File ES-API, Pos, Scan, Frag: 70



Ion 385.2, MSD1 385.2, Target Mass 384.2 +H Positive, EIC=384.9:385.9



Integration Results for DAD1 B, Sig=214,4 Ref=off

RetTim	Width	Area	Height	Area%	MS (+)
1.24	0.03	2102.69	978.42	98.49	193
1.79	0.03	32.13	12.04	1.51	ND

Integration Results for DAD1 C, Sig=254,4 Ref=off

RetTim	Width	Area	Height	Area%	MS (+)
1.24	0.04	1413.16	653.46	96.90	193
1.79	0.05	45.17	15.08	3.10	235

Integration Results for MSD1 TIC, MS File

RetTim	Width	Area	Height	Area%	MS (+)
1.31	0.07	1106323.88	258646.11	100.00	193