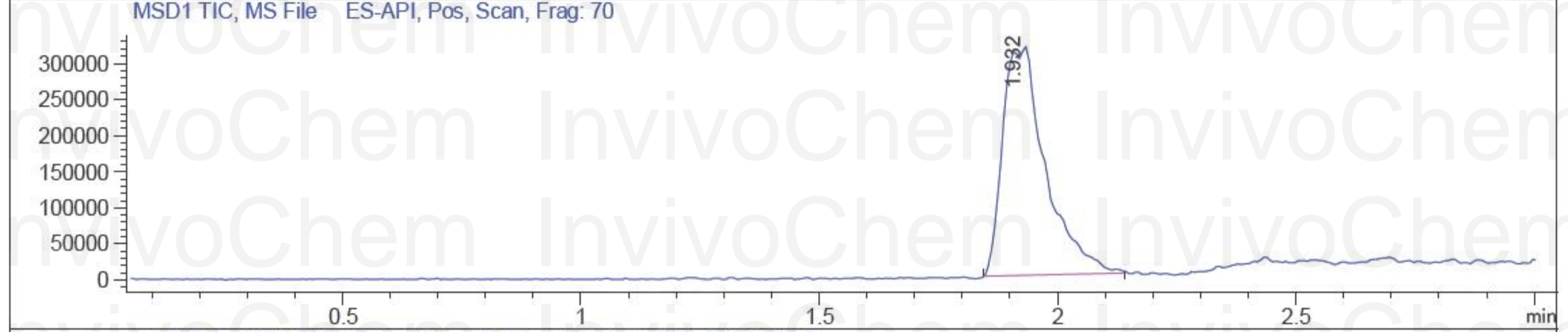
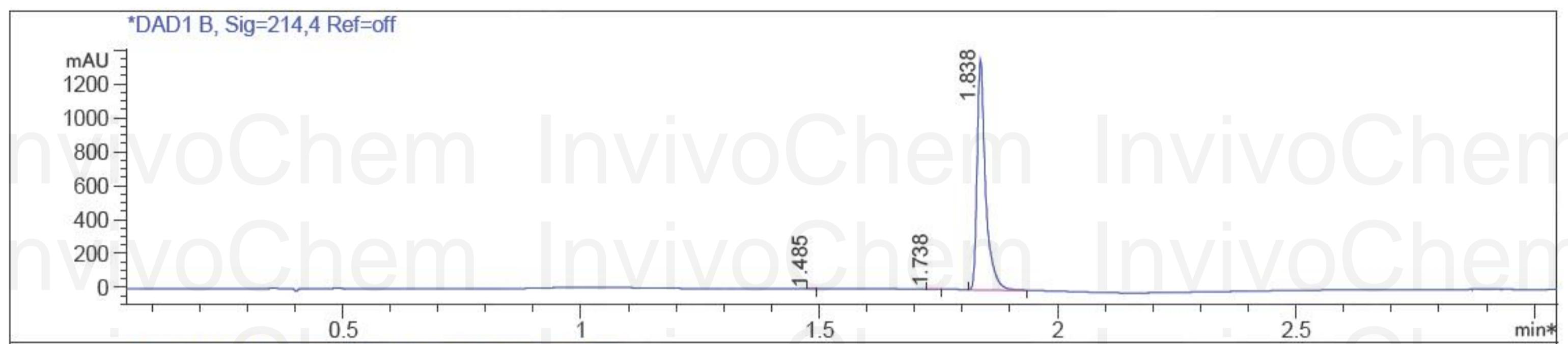


HPLC Analysis for RIPA-56



File D: \CHEM32\1\DATA\BI
Injection Date : 7 Mar 17 1:59 pm +0800 **Seq. Line :** 0
Sample Name : BIZ2017-307-WJ7 **Location :** P2-B-06
Acq. Operator : GZZ_718 **Inj :** 1
Spec. Reported : MS Integration **Inj Volume :** 1 ul
Acq. Method : D:\Chem32\1\METHODS\1-POS-3MIN.M
Analysis Method : D:\CHEM32\1\METHODS\1-POS-3MIN-PROSRSS.M
Catalog No : HY-101032 **Batch#**23766 **Easy-Access Method:** '1-POS-3MIN' 221.10
Method Info : Mobile Phase: A: water(0.01%TFA) B:ACN(0.01%TFA)
Gradient: 5% to 95%B within 1.3 min
Flow Rate : 1.8ml/min
Column : SunFire C18, 4.6*50mm,3.5um A-RP-186
Oven Temperature : 45C

Product Name: RIPA-56
InvivoChem Cat #: V3403
CAS #: 1956370-21-0
Batch #: V340301
Formula: C13H19NO2
Molecular Weight: 221.3



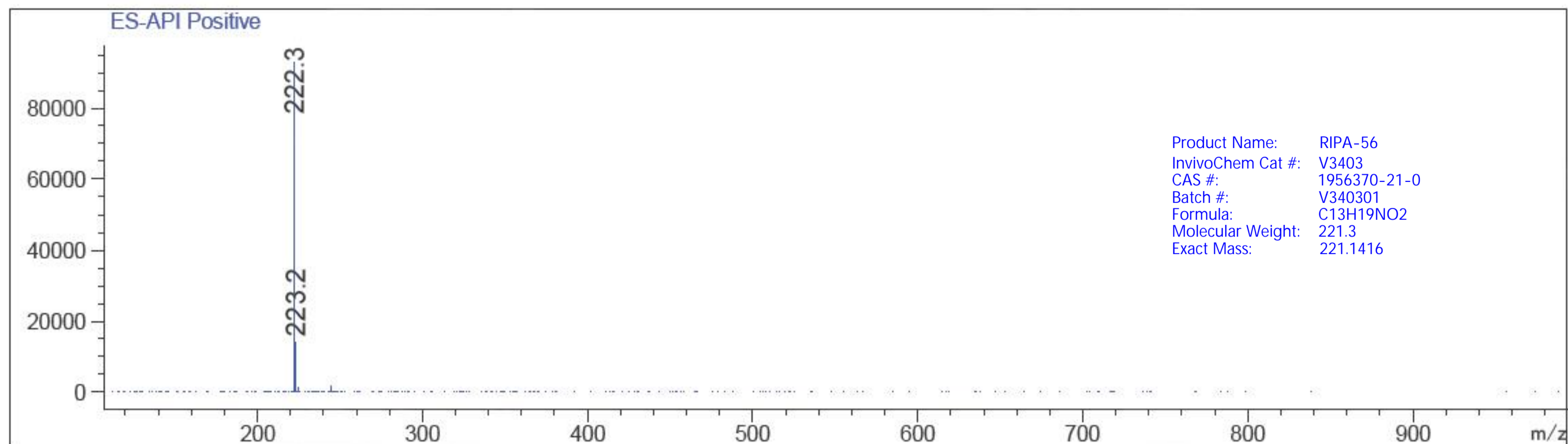
Integration Results for DAD1 B, Sig=214,4 Ref=off

RetTim	Width	Area	Height	Area%	MS (+)
1.49	0.02	0.40	0.45	0.02	ND
1.74	0.02	1.91	1.88	0.11	ND
1.84	0.02	1692.68	1372.72	99.86	222



Ret. Time: 1.93

<<<< POSITIVE SPECTRA >>>>



InvivoChem InvivoChem InvivoChem
InvivoChem InvivoChem InvivoChem
InvivoChem InvivoChem InvivoChem
InvivoChem InvivoChem InvivoChem
InvivoChem InvivoChem InvivoChem
InvivoChem InvivoChem InvivoChem
InvivoChem InvivoChem InvivoChem
InvivoChem InvivoChem InvivoChem
InvivoChem InvivoChem InvivoChem
InvivoChem InvivoChem InvivoChem